

SPRING 2026

ARBICO *organics*

PROVIDING NATURAL SOLUTIONS FOR YOUR ORGANIC HOME,
GARDEN, FARM, LIVESTOCK & PETS SINCE 1979!



Serving Growers Since 1979.

ABOUT US

ARBICO Organics began in 1979 when Rick Frey embarked on a new endeavor in Tucson, AZ - rearing and selling insects that parasitize developing flies (Fly Eliminators®). Rick's wife, Sheri, had a passion for the environment and the two teamed up to become pioneers of organic growing, promoting their philosophy of "bio-balance" by offering customers sustainable pest control alternatives.

Over the years, we have expanded our product line to meet our customers' diversified needs and our team continues to grow to provide our customers with support and knowledge! Providing over forty-five years of environmental stewardship and service to our customers.

We continue to challenge ourselves to provide the best products we can and to deliver them in a timely manner to our customers. What started with one bug has grown to include so much more and we continue to thank the support of our customers and our community of family, friends and coworkers who have made this all possible!



Guaranteed Live Delivery



Customer Service



Commitment to Quality

OFFICE & STORE HOURS:

Monday - Friday: 8:00AM - 4:30PM
(Arizona Time)

800-827-2847

www.arbico-organics.com

customercare@arbico.com



Adalia bipunctata 04



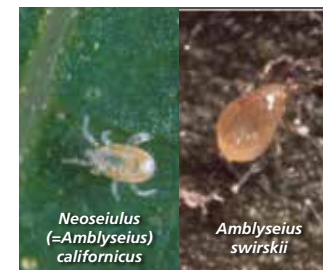
Beneficial Nematodes 17



Fly Eliminators 32



Trichogramma spp. 13



Neoseiulus (=Amblyseius) *californicus*



Amblyseius *swirskii*



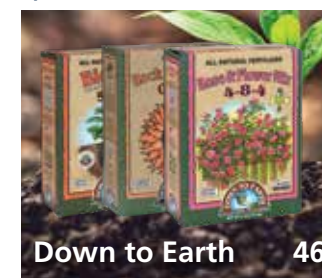
Neoseiulus (=Amblyseius) *cucumeris*



Amblyseius *andersoni*

Mite Control 10

47 Serving years Growers



Down to Earth 46



Disease Control 49



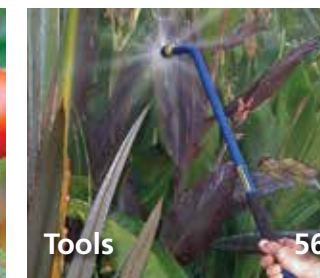
Generalists 05



Fly Sprays - Horse 36



Traps 20



Tools 56



Microbial Inoculants 42



Soil Amendments 40



Weed Control 52



Fly Traps 35



Tree & Orchard Care 39



Featured Fertilizers 43



Co-Founders Rick & Sheri Frey



Powerful generalist predators target a wide range of pest insects—stopping infestations before they start.

POWERFUL PEST CONTROL

Adalia bipunctata



Adalia delivers powerful, natural pest control you can trust.

This voracious predator targets aphids at every stage, with both adults and larvae feeding aggressively to keep infestations under control. Ideal for greenhouses, gardens, and field crops, providing fast, effective protection—without chemicals. Easy to apply. *Adalia* supports healthier plants, stronger yields, and a more sustainable approach to pest management.

Two-Spotted Lady Beetle -

Adalia bipunctata

Rapid Aphid Knockdown for Active Infestations

TARGET: All species of aphid in greenhouse, nursery, and field crops.

DESCRIPTION: When aphid populations escalate quickly, the two-spotted lady beetle delivers aggressive, curative control where it is needed most. Both larvae and adults actively predate in aphid colonies, consuming large numbers of aphids and establishing reproduction directly within infestation zones. Adults continue feeding and laying eggs for several weeks when prey is abundant, allowing colonies to build rapidly, making *Adalia bipunctata* best suited for moderate to heavy aphid pressure and targeted hotspot control.

SUGGESTED USE: Open the container and distribute evenly across the crop canopy, either by gently shaking the bottle over foliage or by placing them into universal release boxes, ensuring the carrier material remains on the leaves. Apply *Adalia* as soon as possible after receipt, as limited food availability during transport can lead to cannibalism if release is delayed.

Temperature: ≈54-86°F

1101225	≈ 250 Larvae	\$87.50
1101228	≈ 1,000 Larvae	\$300.00
1101230	≈ 100 Adults	\$70.00

Larger quantities available.

Overnight Shipping Required



Assassin Bug - *Zelus renardii*

These Voracious Ambush Predators Will Stay In Your Crops & Devour A Wide Variety Of Pest Insects!

TARGET: Leafhoppers, aphids, early instar caterpillars, flies, mites in conjunction with mite predators, and most other pests.

DESCRIPTION: These hardworking ambush predators are an excellent addition to any growing area, large or small. Feasting on a variety of pests, assassin bugs stay put in order to knock out an infestation. With an approximate two-month lifespan, these generalist predators will live, eat and reproduce in the area of release. *Zelus* start eating immediately after hatching, and by the second instar they produce a resin on their legs, which turns them into a walking sticky trap. Once captured, their prey is pierced with their rostrum and a digestive enzyme is injected into the prey and the insect is quickly killed. This method of predation allows for *Zelus* to take out prey much larger than themselves. These generalist predators are voracious and can be used efficiently in gardens, fields, orchards and greenhouses.

SUGGESTED USE (Depending upon level of infestation): Use 500 eggs in a 2,000-3,000 sq. ft. area every 2-3 weeks. Release preventively or at the first sign of in an infestation. For heavy infestations, release 500-1,000 eggs weekly in no more than 2,000 square feet. Release 5-10 thousand eggs biweekly per acre. Shipped as eggs, assassin bugs will typically hatch in under a week.

Temperature: 55-110°F **Relative Humidity:** 10-75%

1000105	≈250 Eggs	\$25.00
1000106	≈500 Eggs	\$40.00
1000107	≈1,000 Eggs	\$65.00

Larger sizes available.

*FREE SHIPPING in the contiguous 48 states. Ships Monday, Thursday via 2nd Day.



Affordable, early-intervention pest control works across temperatures—maximize protection, spend less.

NATURE'S TOP INSECT PREDATOR

Chrysoperla spp.



Green Lacewings are a smart, economical choice for controlling soft-bodied pests in gardens and greenhouses. Their larvae are powerful predators, feeding on aphids, thrips, whiteflies, leafhoppers, mealybugs, and pest moth eggs—helping stop infestations early. For best results, release preventatively and reintroduce throughout the growing season for consistent, natural control.

ADVANTAGES

- Thrives outdoors and in warmer temperatures
- Budget-friendly options ideal for home gardens
- Available as eggs, larvae, or adults for flexible, customized control

Green Lacewing - *Chrysoperla spp.*

Referred To As "Aphid-Lions," These Generalists Have Amazing Dispersal Abilities!

TARGET: Aphids, mealybugs, spider mites, leafhopper nymphs, moth eggs, scale thrips, whiteflies and more.

DESCRIPTION: Green lacewing are available in all three life stages: egg, larva and adult. Green lacewing larvae paralyze their prey with venom and then draw out the body fluids of the pest into their large hollow jaws. Each lacewing larva will devour 200 or more pests or pest eggs a week during their two to three week developmental period.

Temperature: Minimum: 60°F Best: 75-90°F **Relative Humidity:** 30-50%
Release Rate: Every 7-10 days

GREEN LACEWING EGGS:*

1110011	≈5,000 Eggs	\$27.00
1110016	≈10,000 Eggs	\$37.80
1110012	≈25,000 Eggs	\$75.00
1110013	≈50,000 Eggs	\$123.75
1110100	≈5,000 Eggs on Cards	\$30.00
1110102	≈10,000 Eggs on Cards	\$50.00
1110105	≈25,000 Eggs on Cards	\$100.00

GREEN LACEWING LARVAE:

1110005	≈400 Larvae in Hex Frame	\$28.00
1110010	≈1,000 Larvae in Bottle	\$30.50
1110030	≈5,000 Larvae in 5 Liter Bag	\$115.00
1110032	≈10,000 Larvae in Bucket	\$210.00

GREEN LACEWING ADULTS:

1110006	≈100 Adults	\$50.00
1110004	≈250 Adults	\$90.00
1110007	≈500 Adults	\$160.00
1110019	≈1,000 Adults	\$180.00

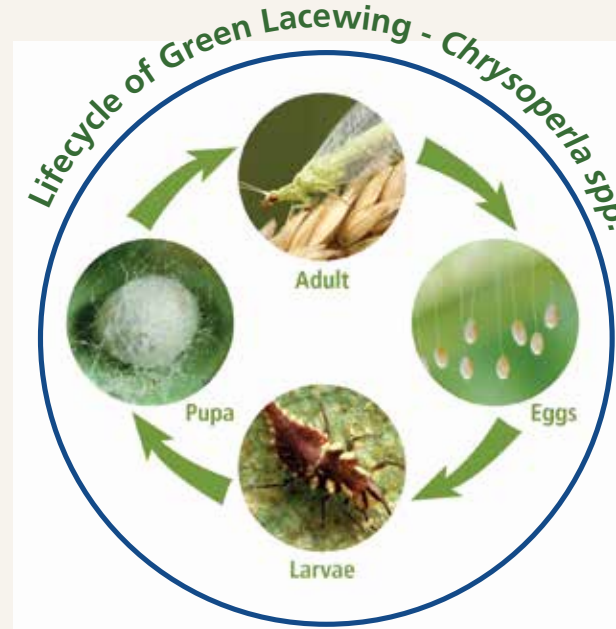
SUGGESTED USE (Depending upon level of infestation):

Eggs	Larvae
Gardens & Greenhouses	Gardens & Greenhouses
≈1k-2k Eggs/1,000 sq. ft.	≈2-4/sq. ft.
Farms	Farms
≈2,000-40,000/Acre	≈1,000-2,000/Acre
Adults	
Gardens & Greenhouses	Farms
≈1-3/sq. ft., 100/Tree	≈200-500/Acre

Weekly Programs and Discounts Available
Larvae & Adults Require OVERNIGHT Shipping

*FREE SHIPPING in the contiguous 48 United States. Quantities of 1,000-25,000 eggs ship via USPS Priority only. Quantities of 50,000-250,000 ship via FedEx 2nd Day Air only. Expedited shipping available for an additional fee.

FREE SHIPPING does not apply to Green Lacewing Adults, Green Lacewing Larval Frames and Green Lacewing Larvae.



Minute Pirate Bug - *Orius insidiosus*

Excellent General Predator In Field Crops & Greenhouses.

TARGET: Thrips, whiteflies, spider mites, aphids, psyllids, small caterpillars, insect eggs and others.

DESCRIPTION: Minute Pirate Bugs (*Orius spp.*) also known as flower bugs, are one of the most common general predators in field crops. Their diet consists of a variety of small pests. They are also known to attack adult thrips.

SUGGESTED USE (Depending upon level of infestation): Sold as adults. For maintenance, release 1 to 2 *Orius* per plant in greenhouses or 1 to 4 *Orius* per plant in hot spot areas outdoors. When treating a serious whitefly, aphid, thrips or other pest infestation, we recommend releasing up to 500 *Orius* per 250 sq. ft. area. For field crops, we recommend releasing between 100 and 2,000 *Orius* per acre, depending on the level of infestation.

Temperature: 64-82°F **Relative Humidity:** Moderate ≈60%

1117001	≈500 Count	\$53.00
1117003	≈1,000 Count	\$88.00
1117004	≈2,000 Count	\$154.00



Look no further for high value crop control of aphids! These parasites and predators target only aphids.

Aphid Predator - *Aphidoletes aphidimyza*

This Dynamo Insect Feeds on Over 60 Species of Aphids, is a Voracious Feeder, Quickly Reducing Populations, Scouting Out New Invading Colonies.



TARGET: Over 60 different aphids, including green peach aphids (*Myzus persicae*) and hemlock woolly adelgid (*Adelges tsugae*).

DESCRIPTION: Predacious to aphids, these insects will inject a paralyzing toxin into pest's legs and feed on aphid body contents, causing eventual death.

SUGGESTED USE (Depending upon level of infestation): Apply to existing infestations weekly, until pests subside. Use ≈1-3/10 sq. ft., ≈2-3/10 sq. ft. or ≈4,500/acre.

Temperature: Warm 64-77°F	Relative Humidity: Moderate ≈70%
1101001	≈1,000 Pupae \$60.00
1101002	≈1,000 Pupae in 4 x 250 Blister Packs \$65.00
1101004	≈2,000 Pupae \$90.00
1101005	≈10,000 Pupae \$250.00

Overnight Shipping Required

Aphid Parasite - *Aphidius colemani*

Exceptional In Greenhouses Producing Vegetables & Ornamentals.



TARGET: Aphids, especially melon and cotton aphids (*Aphis gossypii*).

DESCRIPTION: These tiny (1/8") parasitic wasps specifically target aphids to provide food and a place to oviposit. The adults respond to alarm signals from plants to locate the aphids and, once there, they feast on the honeydew produced by the aphids. The females will then lay their eggs inside aphid nymphs. The larvae will hatch and devour the aphid from inside, turning it into a mummy. The parasites are shipped to you in this stage; simply place them where the infestation is. Once mature, the adult wasp will chew its way out of the mummy and begin hunting aphids.

SUGGESTED USE (Depending upon level of infestation): Apply to existing infestations weekly, until pests subside. Use ≈1-8/1 sq. yd. or ≈500-3,000/acre.

Temperature: 70-77°F	Relative Humidity: High ≈80%
1101302	≈500 Mummies \$43.00
1101301	≈1,000 Mummies \$54.00
1101300	≈1,000 Mummies in 10 x 100 Blister Packs \$56.00
1101303	≈5,000 Mummies \$189.00
1101305	≈5,000 Mummies in 50 x 100 Blister Packs \$195.00
1101304	≈10,000 Mummies (2 x 5,000) \$340.00

Overnight Shipping Required

Aphid Parasite - *Aphelinus abdominalis*

These Ravenous Predators Will Eat & Parasitize Aphid Nymphs!



TARGET: Aphids, including potato (*Macrosiphum euphorbiae*), foxglove (*Aulacorthum solani*), green peach (*Myzus persicae*), California laurel (*Euthoracaphis umbellulariae*), cotton (*Aphis gossypii*), melon (*Aphis gossypii*), bird cherry-oat (*Rhopalosiphum padi*), cereal (*Sitobion avenae*), and alfalfa aphids (*Acyrtosiphon pisum*).

DESCRIPTION: Not great fliers, these parasitic wasps nevertheless can hunt down and destroy large numbers of aphids. These predators will not only lay their eggs in aphid nymphs, they will eat those that they don't parasitize. This secondary method of killing has a powerful effect on the aphid population and provides females with additional protein to develop more eggs. As the larvae matures inside the nymph, they feed on it, turning it into a mummy. The parasites are shipped in this stage; simply place them where the infestation is. The mature adult will chew a hole in the back of the mummy and emerge. This species is better able to handle high temperatures than the *Aphidius* species.

SUGGESTED USE (Depending upon level of infestation): Apply before the onset of infestation. Use ≈250/5,000 sq. ft. or ≈1,000-4,000/acre.

Temperature: 70-77°F	Relative Humidity: Low-High ≈60-80%
1101101	≈250 Mummies \$92.50
1101103	≈1,000 Mummies \$245.00

Overnight Shipping Required

Aphid Parasite - *Aphidius ervi*

This Non-Stinging Parasitic Wasp Attacks Larger Aphid Species.



Photo by: Alex Wild rose (A. rubrodimidium)

TARGET: Aphids, especially potato (*Macrosiphum euphorbiae*), glasshouse potato (*Aulacorthum solani*), green peach (*Myzus persicae*), foxglove (*Aulacorthum solani*) and pea aphids (*Acyrtosiphon pisum*). Also attacks greenbug/wheat (*Shizaphis graminum*), yellow rose aphid (*Uroleucon orientis*), English grain (*Sitobion avenae*) and other aphids.

DESCRIPTION: These mini-wasps (1/8") are vigorous fliers and will aggressively seek out aphid populations, no matter how small. Once they find the aphids, they feed on the honeydew produced by the aphids and lay their eggs inside the aphid nymphs. As the larvae feed on the nymphs from the inside, the nymph turns into a mummy. The parasites are shipped to you in this stage; simply place them where the infestation is. Once mature, the adult wasp will chew its way out of the mummy and begin its own search for aphids.

SUGGESTED USE (Depending upon level of infestation): Apply to existing infestations weekly, until pests subside. Use ≈1-3/10 sq. ft. or 1-8/sq. yd.

Temperature: 64-75°F	Relative Humidity: Moderate ≈70%
1001001	≈250 Mummies \$65.00
1001002	≈500 Mummies \$100.00
1001003	≈1,000 Mummies \$150.00
1001004	≈1,000 Mummies in 10 x 100 Blister Packs \$155.00
1001005	≈5,000 Mummies \$550.00

Overnight Shipping Required

Plan ahead to use whitefly control before infestations become severe.

Integrated Pest Management of Whiteflies

1. Inspect new plants carefully before transplanting.
2. Clean foliage and root balls with soapy water or hydrogen peroxide to eliminate hitchhiking pests.
3. Track populations early using yellow sticky traps or ribbons.
4. Release Green Lacewings preventatively to stop outbreaks before they escalate.
5. Add specialist predators and parasites for targeted infestations.
6. For fast knockdown, use low-impact sprays such as *Beauveria bassiana* (see page 29) or neem-based products.
7. Sanitize tools, equipment, and greenhouse structures between growing seasons.

Shop Cleaning & Sanitizing solutions online at arbico-organics.com

Whitefly Parasite - *Encarsia formosa*

Save Your Plants From The Ravages Of Destructive Whiteflies! Good For Greenhouses.



FREE SHIPPING

TARGET: Greenhouse whiteflies (*Trialeurodes vaporariorum*), sweet potato whiteflies (*Bemisia tabaci*) and approximately 15 other species of whitefly.

DESCRIPTION: The whitefly parasite (parasitoid) is a tiny wasp that host feeds and parasitizes the scale (nymphs) of whiteflies. The time from egg laying to adult emergence is approx. 25 days. Can also be used with Green Lacewings.

SUGGESTED USE (Depending upon level of infestation): **For prevention:** Use 500-1,000/15,000 sq. ft. **Light infestations:** (less than 1 adult whitefly per 50-100 plants) Use 1,000-2,000/5,000-10,000 sq. ft. for minimum of 3 weeks or until control is achieved. **Heavy infestations:** Use 3,000/3,500 sq. ft. for a minimum of 3 weeks or until control is achieved. Hang squares with parasitized pupae on plant foliage at first sign of infestation. Order weekly for approximately 2-6 weeks until control is achieved. Please call to set up your customized weekly program.

Temperature: Moderate 76-85°F	Relative Humidity: Moderate ≈50-70%
1132001	≈1,000 Count \$32.50
1132002	≈3,000 Count \$46.00
1132003	≈5,000 Count \$60.00

2nd Day Shipping Required

*FREE SHIPPING in the contiguous 48 states. Ships via 2nd Day Only. Ships only on Monday, Tuesday and Wednesday.

Whitefly Parasite - *Eretmocerus eremicus*

Better Adapted To Higher Temperatures, Including Temperatures That Fluctuate Day & Night! Good For Desert Climates.



TARGET: Greenhouse whiteflies (*Trialeurodes vaporariorum*), sweet potato whiteflies (*Bemisia tabaci*), silverleaf whiteflies (*Bemisia argentifolii*), and banded-winged whiteflies (*T. abutiloneus*) and others.

DESCRIPTION: The whitefly parasite (parasitoid) is a tiny wasp that host feeds and parasitizes the scale (nymphs) of whiteflies. The time from egg laying to adult emergence is approximately 22 days. Can be used with Green Lacewings.

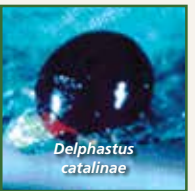
SUGGESTED USE (Depending upon level of infestation): For prevention: use 1,000/10,000 sq. ft. Light infestations: 1,000/1,000 sq. ft. Heavy infestations: use 5,000/1,000 sq. ft. Hang squares with parasitized pupae on plant foliage at first sign of infestation. Order weekly for approximately 2-6 weeks until control is achieved. Call to set up your customized weekly program.

Temperature: Moderate 62-82°F	Relative Humidity: Minimum 40%
1000703	≈5,000 in 20 x 250 Blister Packs \$94.95

Overnight Shipping Required

Whitefly Predator - *Delphastus catalinae*

These Tiny Brown Beetles Consume Several Hundred Pests Daily!



TARGET: Aphids, scale, thrips, and especially greenhouse and outdoor sweet potato whiteflies and other soft-bodied insect pests.

DESCRIPTION: Females lay ≈3-4 eggs daily and adults live for approximately one month. Adult beetles capture prey with their mandibles, inject paralyzing venom & feed on pest body fluids. Shipped as adults, they should be used at the first signs of infestation.

SUGGESTED USE (Depending upon level of infestation): Upon arrival, release at sundown. May be stored at temperatures between 50-60°F for 1-2 days. Can be combined with other whitefly parasites.

Temperature: Moderate 65-90°F	Relative Humidity: High ≈70% & Higher
1126001	≈100 Count \$50.00
1126003	≈200 Count \$90.00
1126002	≈1,000 Count \$190.00

Overnight Shipping Required

Fungus gnat predators control the damaging soil developing stage. Compatible with Beneficial Nematodes.

An Established System to Beat Fungus Gnats

Protect plant roots with our start-to-finish fungus gnat IPM strategy.

1. Monitor populations with yellow sticky traps.
2. Reduce excess moisture—improve drainage and avoid standing water.
3. Increase airflow and prune plants for better circulation.
4. Prevent and treat infestations with *Bacillus thuringiensis israelensis* (Bti) (see page 37)
5. Apply NemAttack *Steinernema feltiae* Beneficial Nematodes to target larvae and thrips.
6. Introduce rove beetles (*Dalotia coriaria*) for long-term control of soil-dwelling pests.

Rove Beetle - *Dalotia coriaria* (=*Atheta coriaria*)

For Indoor Control Of Soil Dwelling Pests!

TARGET: Fungus gnats (sciarid flies), thrips and shore flies.

DESCRIPTION: "Rove beetles" will feed on small soil-dwelling pest larvae and eggs. Adults are a brown-black color, 3-4 mm long and winged. They are predacious in all stages and develop from egg to adult in about 21 days; passing through three larval instars prior to pupation and adulthood. Adults consume about 150 pest fungus gnat eggs per day. Compatible with *Stratiolaelaps scimitus* (=Hypoaspis miles). Winged adults have high dispersal and colonization rates and are not recommended for outdoor use.

SUGGESTED USE (Depending upon level of infestation): Use season-long, in covered crops such as ornamentals, cucumbers, strawberries and mushrooms. Apply directly to growing medium surface. Apply approx. 1-5 predators per sq. ft. For high infestation, increase application rate and consider pairing with another suitable predator or parasite like *S. scimitus*, beneficial nematodes, or specific mite predators.

Temperature: Moderate 55-80°F **Relative Humidity:** 50-80%

1101330	≈500 Adults	\$55.00
1101331	≈1,000 Adults	\$78.00
1101332	≈3,000 Adults	\$170.00
1101334	≈5,000 Adults	\$250.00

Overnight Shipping Required



Fungus Gnat Predator - *Stratiolaelaps scimitus* (=Hypoaspis miles)

Stop Destructive Fungus Gnats & Thrips In Their Developing Soil Stages.

TARGET: Fungus gnats, western flower thrips, springtails, mold mites, spider mites, cactus root mealybugs, strawberry root weevils and black vine root weevils.

DESCRIPTION: This tiny brown mite naturally inhabits the top layer of soil where larvae and pupae dwell. Female predatory mites lay their eggs in soil and the nymphs and adults feed on pests.

SUGGESTED USE (Depending upon level of infestation): ≈5,000-10,000 mites treat approximately 1,000 sq. ft. Release ≈25,000-50,000/acre depending on level of infestation. Apply weekly until infestation subsides. Weekly release programs available. Please Call. Trap adult infestations using Blue Sticky Traps. Reinforce with applications of beneficial nematodes.

Temperature: Moderate 60-74°F **Soil Conditions:** Moist soil. Not too damp.

1154000	≈12,500 Count	\$21.00
1154002	≈25,000 Count	\$30.00
1154005	≈50,000 (2 x 25,000)	\$50.00
1154010	≈125,000 in 5 Liter Bag	\$130.00

Overnight Shipping Required



Control Fungus Gnat Larvae Using *Bacillus thuringiensis israelensis*

Make Bti a cornerstone of your fungus gnat IPM program. It targets larvae—the most damaging life stage—protecting roots where it matters most. Compatible with Beneficial Nematodes and predators, Bti delivers effective, eco-friendly control.

For additional solutions, see page 37 or shop online.



Use these targeted predators early to prevent plant damage. Compatible with Beneficial Nematodes.

NemAttack™ Sf Beneficial Nematodes

Sf Beneficial Nematodes interrupt thrips reproduction and reduce local populations leading to fewer adults and less resulting damage. Use in conjunction with predatory insects as part of an integrated pest management program. Apply with a watering can, hose end sprayer or backpack sprayer.

See pages 16-19 for more information.



Thrips & Whitefly Predator - *Amblyseius swirskii*

For Use On A Variety Of Pest Mites, Thrips & Whiteflies.

TARGET: Western flower thrips, onion thrips, broad mites, hemp russet mites, glasshouse whiteflies, tobacco whiteflies or silverleaf whiteflies.

DESCRIPTION: These predacious mites feed on various pest insects in their developing adult stages, pollen and mold. They may consume about 10 thrips or whitefly larvae a day and up to about 20 whitefly eggs per day. They will not undergo diapause, and can be used in protected crops in cooler growing areas.

SUGGESTED USE (Depending upon level of infestation): Introduce before the onset of infestation, when temperatures are no lower than 60°F. Apply at a rate of 10 mites per sq. ft. every other week as needed, or apply continuous release sachets every 2-4 weeks. Use 1 sachet per plant, or 1 per 3 plants if canopy is touching. Use sachets on sticks during propagation or where canopy cannot support hooks. Not recommended for use on infestations in tomato crops.

Temperature: Moderate 77-85°F

Relative Humidity: 70%

BULK SIZES:

1101312	≈25,000 in Tube	\$68.00
1101319	≈50,000 in Tube	\$120.00
1101311	≈125,000 in 5 Liter Bag	\$240.00

CONTROLLED RELEASE:

1101317	≈50,000 in 200 Mini Sachets w/Hooks	\$140.00
1101308	≈62,500 in 250 Mini Sachets w/Hooks	\$170.00
1101318	≈62,500 in 500 Mini Sachets on Sticks	\$245.00
1101306	≈125,000 in 500 Mini Sachets w/Hooks	\$250.00
1101316	≈125,000 in 1,000 Mini Sachets w/Hooks	\$365.00
1101314	≈125,250 in 6 x 328 ft. Strips of Sachets	\$500.00
1101315	≈250,000 in 1,000 Mini Sachets w/Hooks	\$480.00

Overnight Shipping Required



Thrips Predator - *Amblyseius cucumeris*

These Beneficial Mites Consume Vast Quantities Of Thrips.

TARGET: Prefers greenhouse and western flower thrips. They will also eat spider mites, russet mites and pollen.

DESCRIPTION: Tan colored adult females lay about 35 small white eggs throughout their lifespan of about 30 days. During the 7-10 day nymph stage, predation begins. Adults will consume about 1 pest a day. Predators are shipped as adults.

SUGGESTED USE (Depending upon level of infestation): For best results, apply before onset of thrips infestation. For prevention, use at a rate of 10-20 mites per sq. ft. at weekly intervals. Use continuous release sachets at 1 per 3 sq. ft. for 3-6 weeks. Spot treat with 10-40 mites per sq. ft. weekly until infestation subsides. Monitor with blue sticky traps (see page 20).

Temperature: Moderate 66-80°F **Relative Humidity:** Moderate 65-72%

BULK SIZES:

1152230	≈20,000 in Bran only	\$22.00
1152231	≈20,000 in Vermiculite only	\$22.00
1152207	≈25,000 in Bran/Vermiculite Mix	\$35.00
1152233	≈50,000 in Bran only	\$47.00
1152224	≈50,000 in Vermiculite only	\$47.00
1152204	≈50,000 in Bran/Vermiculite Mix	\$47.00
1152205	≈100,000 in Bran only	\$60.00
1152234	≈100,000 in Vermiculite only	\$60.00
1152235	≈250,000 in Bran only	\$120.00
1152223	≈250,000 in Vermiculite only	\$120.00
1152206	≈250,000 in Bran/Vermiculite Mix	\$115.00
1152209	≈500,000 in Bran/Vermiculite Mix	\$200.00

CONTROLLED RELEASE W/HOOKS:

1152215	≈25,000 in 100 Mini Sachets w/Hooks	\$25.00
1152219	≈125,000 in 500 Mini Sachets w/Hooks	\$68.75
1152201	≈200,000 in 200 Sachets w/Hooks	\$90.00
1152221	≈200,000 in 400 Mini Sachets w/Hooks	\$80.00
1152222	≈250,000 in 1,000 Sachets w/Hooks	\$135.00
1152228	≈500,000 in 500 Mini Sachets w/Hooks	\$185.00

CONTROLLED RELEASE ON STICKS:

1152216	≈25,000 in 100 Mini Sachets on Sticks	\$25.00
1152225	≈125,000 in 500 Mini Sachets on Sticks	\$105.00
1152226	≈250,000 in 1,000 Mini Sachets on Sticks	\$150.00
1152227	≈500,000 in 2,000 Mini Sachets on Sticks	\$280.00

CONTROLLED RELEASE-SPECIALTY:

1152203	≈300,000 in 300 GEMINI Sachets	\$115.00
1152220	≈1,600,000 in 6 x 525 ft. Strips of Sachets	\$600.00

Overnight Shipping Required



Select mite predators using temperature, humidity and growing conditions for optimal control.

Mite Predator - *Amblyseius andersoni*

Great For Pre-Emergent Control Of Pest Mite Infestations!

TARGET: Various pest mites including broad mites, cyclamen mites, two-spotted spider mites, red spider mites, tomato russet mites and rust mites.



DESCRIPTION: This predatory mite is less than 1mm long and light brown. Adult females lay about 35 eggs in a lifetime, arranging eggs onto leaf hairs. This predatory mite feeds on all stages of pest mites, thrips, pollen and honeydew.

SUGGESTED USE (Depending upon level of infestation): For best results, apply as a preventative treatment of mite infestations. Sachets allow for controlled release of mites over 4-6 weeks. Apply at a rate of 1-2 mites per sq. ft. or 1 sachet per plant. Place sachets within plant canopy. Use sachets on sticks at 1 per propagation tray or where canopy cannot hold sachet on hook. Replace sachets every four weeks for continued control.

Temperature: Moderate 42-100°F **Relative Humidity:** High if in higher temps.

BULK SIZES:

1101324	≈25,000 in Tube	\$87.50
1101327	≈50,000 in 1 Liter Bottle	\$150.00
1101321	≈125,000 in 5 Liter Bag	\$325.00

CONTROLLED RELEASE:

1101323	≈25,000 in 200 Mini Sachets w/Hooks	\$160.00
1101350	≈25,000 in 200 Mini Sachets on Sticks	\$175.00
1101325	≈62,500 in 250 Sachets w/Hooks	\$225.00
1101355	≈125,000 in 1,000 Mini Sachets on Sticks	\$720.00
1101322	≈125,250 in 6 x 328 ft. Strips of Sachets	\$670.00

Overnight Shipping Required

Spider Mite Destroyer - *Feltiella acarisuga*

We Recommend This Predator When Spider Mite Infestations Are Widespread.

TARGET: Two spotted spider mites, carmine spider mites, European red mites; various mites.



DESCRIPTION: The larvae of this tiny gall-midge feeds on two-spotted spider mites and various other species of spider mites. Recommended to be used with *P. persimilis* when spider mite infestations are severe to rapidly knock back the pest mites. *Feltiella* works best on plants that have hairy stems. Adults do not prey on spider mites, but search for colonies and deposit eggs next to them. Eggs hatch in 2 days and larvae feed on all stages of spider mites for 4-6 days. The entire life cycle is about 15 days.

SUGGESTED USE (Depending upon level of infestation): For light infestations, introduce <1/1,000 sq. ft. or 500/acre every 7 days, for at least 3 weeks. For heavy infestations, introduce 2-3/1,000 sq. ft. or 1,000/acre every 7 days, for at least 3 weeks.

Temperature: Moderate 60-77°F **Relative Humidity:** High 50-90%

1155701	≈250 Count	\$85.00
----------------	------------	----------------

Overnight Shipping Required

Mite Predator - *Neoseiulus (=Amblyseius) californicus*

Good For Areas Where Temperatures Fluctuate Greatly Such As Deserts.

TARGET: Various spider mites, cyclamen mites, broad mites and russet mites.



DESCRIPTION: This tiny, ivory, pear-shaped predatory mite feeds on a variety of pests on crops including:

cucumbers, tomatoes, strawberries, tropical foliage plants, and greenhouse roses. Although adults consume prey at a relatively slow rate of about one egg per day, they can survive longer under starvation conditions. During their lifetime of about 20 days, females will lay approx. 1-3 eggs per day. Eggs hatch within a few days and adulthood is reached in about 4-12 days.

SUGGESTED USE (Depending upon level of infestation): Use ≈1,000 per 4,500 sq. ft. in greenhouses to treat for broad mite. Use ≈10,000 per acre to treat for cyclamen mites on strawberries. Use weekly until infestation subsides.

Temperature: Warm 50-105°F **Relative Humidity:** 40-80%

BULK SIZES:

1151213	≈2,000 Count	\$43.00
1151209	≈5,000 Count	\$65.50
1151210	≈10,000 Count (2 x 5,000)	\$106.00
1151212	≈25,000 Count	\$128.00

CONTROLLED RELEASE W/HOOKS:

1151216	≈10,000 - 100 Sachets w/Hooks	\$87.00
1151271	≈25,000 - 100 Sachets w/Hooks	\$105.00
1151215	≈25,000 - 200 Sachets w/Hooks	\$175.00
1151217	≈50,000 - 500 Sachets w/Hooks	\$270.00
1151276	≈62,500 - 250 Sachets w/Hooks	\$155.00
1151277	≈125,000 - 500 Sachets w/Hooks	\$255.00
1151278	≈125,000 - 1,000 Sachets w/Hooks	\$750.00
1151279	≈250,000 - 500 Sachets w/Hooks	\$350.00

CONTROLLED RELEASE ON STICKS:

1151295	≈25,000 - 200 Sachets on Sticks	\$190.00
1151296	≈125,000 - 1,000 Sachets on Sticks	\$720.00

CONTROLLED RELEASE-SPECIALTY:

1151292	≈25,000 - 100 Gemini Sachets	\$190.00
1151290	≈125,000 - Bugline - 6 x 328 ft. Sachet Strips	\$625.00

Overnight Shipping Required

Considering pest pressure and environment, consider the variety of delivery system options.

Mite Predator - *Neoseiulus (=Amblyseius) fallacis*

An Excellent Mite Predator For Control Of Many Different Types Of Mites.

TARGET: Two spotted spider mites, broad mites, cyclamen mites, hemp russet mites; various mites.



Photo by: Dr. Art Agnello, Cornell University

DESCRIPTION: This predatory mite effectively suppresses cyclamen mites in strawberry fields, broad mites in greenhouse crops, European red mites and two-spotted spider mites in orchards, spider mites on roses and vegetable crops in greenhouses and general mite problems on mint and hops in northern climates. Eggs and nymphs are difficult to see as they are small and almost transparent. Adults are pear-shaped and ivory until feeding, when they take on the red or brown coloration of their prey. Adult females consume around 2-16 pest mites per day and lay ≈20-60 eggs during a 14-60 day life-cycle. The transition from egg to adult stage takes about 7-9 days.

SUGGESTED USE (Depending upon level of infestation): Good for cold climates! Use preventatively; over-winters and sustains on pollen. Release at the start and end of the season. Use ≈1,000 per 4,500 sq. ft. or 10,000 per acre.

Temperature: Moderate 50-80°F **Relative Humidity:** Minimum 50%

1151400	≈500 Count	\$38.00
1151401	≈1,000 Count	\$52.00
1151402	≈2,000 Count	\$98.00
1151404	≈10,000 count	\$240.00

Overnight Shipping Required

Spider Mite Destroyer - *Stethorus punctillum*

Predatory In Both Larval & Adult Stages. Consumes All Life Stages Of Spider Mites.



TARGET: Two spotted spider mites, European red mites, spruce spider mites, southern red mites; various mites.

DESCRIPTION: Using smell, this tiny ladybug is an effective locator and as an adult will consume more than 40 mites per day. Females lay up to 15 eggs per day. Development to the adult stage takes around 18 days at a temperature of 70°F and the total lifespan of the predator is about 9 weeks. They are known to survive temperatures over 100°F in field crops.

SUGGESTED USE (Depending upon level of infestation): Use 100 adults per 300 sq. ft. of infested area. Release adult beetles into mite infested areas and look for signs of reproduction (larvae, pupae, and adults) after four weeks. This predator is more mobile than spider-mite predators (predatory mites) but takes longer to establish, so releases of spider-mite predators should also be made into mite infested areas.

Temperature: Moderate 73-77°F **Relative Humidity:** High 60%

1113310	≈100 Count	\$140.00
1113312	≈200 count (2 x 100)	\$240.00

Subject to seasonal availability.

Overnight Shipping Required

Mite Predator - *Phytoseiulus persimilis*

The Mite Predator With The Highest Consumption & Dispersal Rate

TARGET: Two spotted spider mites and various other mites.



Photo by: BioBee Sde Eliyahu Ltd., © BioBee

DESCRIPTION: These predatory mites have high consumption rates, feeding on approx. 5-20 pests and pest eggs per day! Females will lay about 60 eggs throughout their 50-day lifespan. They will not enter a diapause stage in enclosed or greenhouse settings; making them active year round. Adults will begin feeding as soon as they are applied.

P. persimilis PLUS is reared in an innovative way to include mobile mites (adults and juveniles) as well as eggs. *P. persimilis* PLUS arrives pale and changes to orange/red after predation begins. Adults begin feeding upon dispersal. Eggs can mature in about a week (at temps between 70-80°F). The variety of life stages allow for both immediate and ongoing control as the mites mature.

P. persimilis PLUS Sachets

PLUS Controlled Release sachet mites emerge between 8 - 12 days after application. Best for preventative use. PLUS RAPID Release sachets are used for hot spot treatment with emergence around 3-5 days.

SUGGESTED USE (Depending upon level of infestation):

Level/Type	Bulk	Sachets
Low Infestation	1-3 Mites per sq.ft.	1 Controlled Release Sachet per 50 sq.ft.
Moderate Infestation/ Speckling	5+ Mites per sq.ft.	1 Rapid Release Sachet per 20 sq.ft.
Webbing/Outbreak	10+ Mites per sq.ft. after knockdown/cleaning	1 Rapid Release Sachet per 10 sq.ft.
Outdoor Crops	20,000 - 200,000 Mites per acre depending on infestation level	
Clones		1 Sachet per plant

Temperature: Moderate: 68-81°F **Relative Humidity:** High: 60-90%

P. PERSIMILIS PLUS BULK SIZES:

1151255	PLUS ≈ 25,000	\$78.00
1151256	PLUS ≈ 50,000	\$137.50

P. PERSIMILIS PLUS CONTROLLED RELEASE:

1151235	PLUS ≈5,000 in 50 sachets w/hooks	\$54.00
1151236	PLUS ≈10,000 in 100 sachets w/hooks	\$105.00
1151230	PLUS ≈25,000 in 250 sachets w/hooks	\$230.00
1151231	PLUS ≈50,000 in 500 sachets w/hooks	\$400.00

P. PERSIMILIS PLUS RAPID RELEASE:

1151245	PLUS RAPID ≈5,000 in 50 sachets w/hooks	\$50.00
1151246	PLUS RAPID ≈10,000 in 100 sachets w/hooks	\$95.00
1151240	PLUS RAPID ≈25,000 in 250 sachets w/hooks	\$225.00
1151241	PLUS RAPID ≈50,000 in 500 sachets w/hooks	\$387.50

Overnight Shipping Required

Considering pest pressure and environment, consider the variety of delivery system options.

MiteMix

A Powerful Blend of Predatory Mites for Multi-Pest Coverage

TARGET: Cyclamen mites, broad mites, russet mites, two-spotted spider mites, red spider mites, tomato russet mites, rust mites, hemp russet mites, western flower thrips, onion thrips, glasshouse whiteflies, tobacco whiteflies, silverleaf whiteflies

DESCRIPTION: MiteMix was designed for growers facing multiple or varied pest infestations of mites, thrips and/or whiteflies. These strategic blends of 3 or 4 predator options provide control across multiple pest life stages and changing conditions in the growing environment.

INCLUDED PREDATORS: *Neoseiulus californicus* (see pg 10), *Amblyseius swirskii* (see pg 9), *Neoseiulus cucumeris* (see pg 9) and **optionally** *Amblyseius andersoni* (see pg 10). See specific pests for more information. Maximize efficiencies in your operation by applying multiple biological control agents in one application!

Temperature: ≈ 68-85° **Relative Humidity:** Low ≈ 40-70°

1151301	MiteMix CSC125	≈125,000 Mixed Mites	\$170.00
1151300	MiteMix CSCA150	≈150,000 Mixed Mites	\$180.00

Overnight Shipping Required

Mite Predator -

Galendromus occidentalis

Excellent for Use in Hot and Dry Environments.

TARGET: Two spotted spider mites, russet mites, eriophyid mites, prunus rust mites, blister mites, European red mites; various mites.

DESCRIPTION: Galendromus is an active predator of mite eggs, nymphs and adults. Larvae and adults feed on all life stages of pest mites as they mature. Early stages are white, turning red or brown depending on pest host consumed. Adults feed on about 6 pest eggs or 1-3 pest adults per day. Ideal for use on fruit trees, vegetables, grapes and field crops.

SUGGESTED USE: For indoor, use ≈1,000 per 500 sq. ft., or 1 predatory mite for each 5 pest mites. For outdoor, use ≈2,000-5,000 per acre. Apply weekly or biweekly depending on infestation level.

Temperature: Hot ≈ 80-110° **Relative Humidity:** Low ≈ 30-60°

1151202	≈ 1,000	\$35.00
1151222	≈ 2,000	\$50.00
1151218	≈ 5,000	\$100.00
1151220	≈ 10,000	\$200.00
1151225	≈ 25,000	\$300.00
1151221	≈ 50,000	\$500.00



SPIDER MITE CONTROL MADE SIMPLE

Spider mites can wreak havoc on crops, but controlling them doesn't have to be stressful, or chemical-heavy!

Follow these five steps for easy, effective management:

- Be Prepared**
Monitor susceptible crops and watch for early signs of stress. Healthy plants with proper spacing and moisture are less attractive to pests.
- Spot the Damage**
Look for stippling (yellow-brown spots), curling leaves, leaf drop, and webbing. To confirm, shake leaves over white paper, reddish-brown specks mean mites.
- Identify the Culprit**
Knowing the species helps target control. Use a hand lens or microscope, or call us for help.
- Take Action**
 - Sanitation:** Clean surfaces and inspect plants before planting.
 - Optimize Growing Conditions:** Reduce stress with proper watering and organic fertilizers.
 - Knockdown Sprays:** Use organic options like Neem Oil, Pyrethrins, or Azadirachtin. Repeat every 3 days until controlled.
 - Biological Control:** After knockdown, release beneficial insects like *P. persimilis* or *N. californicus* for ongoing protection.
- Monitor & Maintain**
Keep checking plants and relax knowing you're ready for the next battle.

ARBICO Organics is here to help. Your ally in pest control!

Timing is KEY. Release Trichogramma moth egg parasites when eggs are present to control before emergence.

Moth Egg Parasites - *Trichogramma spp.*

Prevent Caterpillar Damage On Crops!

TARGET: The egg stages of more than 200 *Lepidopteran* pests including: codling moths, borers, loopers, webworms, cutworms, bollworms, tomato hornworms and corn earworms.

DESCRIPTION: *Trichogramma spp.* lay their eggs in the pest eggs, killing them. Adults emerge 2-3 days after release. They live 7-75 days depending on temperature and moisture. *Trichogramma* are shipped in the parasitized host egg.

Trichogramma Hanging Tabs/Cards: Cards and tabs are the fastest way to introduce *Trichogramma* into the growing area. Eggs arrive on hanging cards for easy and targeted application in the plant canopy.

Trichogramma Hanging Dispensers: Dispensers are uniquely designed for early introduction and preventative use before high pest pressure. They are designed to have 4 waves of releases for longer control. This format is more resistant to predator damage and is more weather resistant. **Trichogramma Capsules:** Capsules also provide 4 waves of *Trichogramma* releases and are best used preventatively. They are designed for use by automation (drone, tractor), but also great for hard-to-reach areas. These sturdy capsules have precision release holes for wasps to emerge while keeping other pests out.

SUGGESTED USE (Depending upon level of infestation): Use ≈1 tab/3,000 sq. ft. Release at first flight of moths and every 7-10 days thereafter until infestation subsides. **DISPENSERS/CAPSULES:** 50,000-200,000 parasites/acre. Use 3 dispensers/capsules to treat up to 3000 sq. ft. Use preventatively where historically pests have been seen, or as early in the pest lifecycle as possible (eggs must be present).

Temperature: Minimum 50°F **Relative Humidity:** Moderate

Trichogramma pretiosum

General predator.

BULK:

1131055	≈1,000,000	\$250.00
----------------	------------	-----------------

CONTROLLED RELEASE - DISPENSERS:

1131059	≈7,500 - 3 Dispensers	\$22.00
1131060	≈12,500 - 5 Dispensers	\$25.00
1131061	≈25,000 - 10 Dispensers	\$37.50
1131062	≈62,500 - 25 Dispensers	\$50.00
1131065	≈125,000 - 50 Dispensers	\$90.00

CONTROLLED RELEASE - CAPSULES:

1131077	≈5,000 - 5 Capsules	\$20.00
1131078	≈10,000 - 10 Capsules	\$30.00
1131070	≈30,000 - 30 Capsules	\$37.50
1131071	≈60,000 - 60 Capsules	\$60.00
1131075	≈90,000 - 90 Capsules	\$67.50



Moth Egg Parasites



Trichogramma brassicae

For low lying crops, cole crops; cabbage loopers and European Corn Borer.

CARDS:

1131910	≈10,000 (3 Tabs)	\$22.00
1131903	≈20,000 (6 Tabs)	\$25.00
1131911	≈100,000 - 1 Card (30 Tabs)	\$46.00

BULK EGGS:

1131950	≈100,000	\$40.00
1131955	≈1,000,000	\$250.00

CONTROLLED RELEASE - DISPENSERS:

1131960	≈7,500 - 3 Dispensers	\$22.00
1131961	≈12,500 - 5 Dispensers	\$25.00
1131962	≈25,000 - 10 Dispensers	\$37.50
1131963	≈62,500 - 25 Dispensers	\$54.00
1131965	≈125,000 - 50 Dispensers	\$90.00

CONTROLLED RELEASE - CAPSULES:

1131969	≈13,500 - 5 Capsules	\$20.00
1131970	≈27,000 - 10 Capsules	\$25.00
1131971	≈67,500 - 25 Capsules	\$47.25
1131972	≈135,000 - 50 Capsules	\$67.50
1131975	≈270,000 - 100 Capsules	\$108.00

Trichogramma minutum

East of the Rockies; budworms, leafrollers and codling moths.

CARDS:

1129001	≈10,000 (3 Tabs)	\$22.00
1129003	≈20,000 (6 Tabs)	\$25.00
1129010	≈100,000 - 1 Card (30 Tabs)	\$46.00

BULK EGGS:

1129050	≈100,000	\$40.00
1129051	≈200,000 (2 x 100k)	\$70.00
1129052	≈500,000 (5 x 100k)	\$150.00
1129055	≈1,000,000	\$250.00

Trichogramma platneri

West of the Rockies, orchards and tall crops.

CARDS:

1130001	≈10,000 (3 Tabs)	\$22.00
1130003	≈20,000 (6 Tabs)	\$25.00
1130030	≈100,000 - 1 Card (30 Tabs)	\$46.00

BULK EGGS:

1130050	≈100,000	\$40.00
1130051	≈200,000 (2 x 100k)	\$70.00
1130052	≈500,000 (5 x 100k)	\$150.00
1130055	≈1,000,000 (10 x 100k)	\$250.00

FREE SHIPPING in the contiguous 48 states. Ships Monday - Thursday via 2nd Day. Please allow for a minimum of 24 hours to process orders. Orders received after 8:00 AM on Thursday will ship the following Monday. Upgraded Overnight shipping will incur a \$20 upcharge. DISPENSERS/CAPSULES: May require 1 week lead time. See website for more information.

Specialist predators have one target pest and can be relied on when applied judiciously.

Mealybug Parasitoid - *Anagyrus spp.*

Stop Destructive Mealybugs With This Beneficial Parasitoid.

Image Citation: All rights reserved to BioBee Sde Elyahu Ltd.

TARGET: Citrus mealybugs, grape mealybugs, vine mealybugs, cypress mealybugs, obscure mealybugs, longtail mealybugs and most *Planococcus* and *Pseudococcus spp.*



DESCRIPTION: These solitary parasitoid wasps of mealybugs are shipped as mummies, hatch within five days of arrival and immediately begin to oviposit. Once the egg is laid inside the mealybug, the larva develops and consumes the mealybug. One female will parasitize nearly 50 mealybugs.

SUGGESTED USE (Depending upon level of infestation): Release 1 wasp per 5 sq. ft. every two weeks and or field application use about a minimum of 2,000 mummies/acre monthly. Keep at room temperature to ensure emergence. Remove bottle top, place near infested areas and let wasps emerge on their own. DO NOT use near ants as they will inhibit wasp parasitism & reproduction.

Temperature: Moderate 65-93°F **Relative Humidity:** Moderate ≈40-60%

1132072 ≈500 Mummies **\$185.00**

Currently only available for sale within the state of CA.

Overnight Shipping Required

Mealybug Destroyer - *Cryptolaemus montrouzieri*

These Tiny Ladybird Beetles Devour Pest Mealybugs In Both The Larval & Adult Stages.



Photo by: Nijel Cruz © Nijel Cruz

TARGET: Mealybugs, aphids, mites, thrips, whiteflies, and other soft-bodied insect pests.

DESCRIPTION: *Cryptolaemus* is a small dark brown ladybug with an orange head and tail (*elytra*). The larvae are up to 13 mm long and are white with a wax-like covering. The pupae are found around stems, the underside of leaves, greenhouse structures and other sheltered areas. Shipped as adults and most effective in severe infestations.

SUGGESTED USE (Depending upon level of infestation): 250-1,000/acre every 2 weeks, 2-3 releases. Use indoors and outdoors. Weekly release programs available. Please call.

Temperature: Low-High 64-81°F **Relative Humidity:** Moderate ≈70-80%

1114702 ≈100 Adults **\$77.00**
1114703 ≈250 Adults **\$110.00**
1114704 ≈500 Adults **\$210.00**
1114705 ≈1,000 Adults (2 x 500) **\$400.00**
1114710 ≈5,000 Adults (10 x 500) **\$1,200.00**

Overnight Shipping Required

Red Scale Parasite - *Aphytis melinus*

Use These Parasitic Wasps On A Variety Of Armored Scale Pests!



TARGET: California red scales, citrus red scales, oleander scales, San Jose scales, ivy scales, yellow scales and other armored scale varieties.

DESCRIPTION: Shipped as adults. Females lay their eggs in host scale. Larvae hatch inside host bodies and consume and kill scale. One adult will kill about 30 scale insects in one generation. Adult parasites live approximately 26 days.

SUGGESTED USE (Depending upon level of infestation): Release about 1-2 wasps per sq. ft. or about 5,000/acre. Release weekly and 1-3 applications are usually required depending upon infestation.

Temperature: Moderate 76-85°F **Relative Humidity:** Moderate ≈40-50%

1122001 ≈10,000 Adults **\$75.00**
1122002 ≈25,000 Adults **\$80.00**
1122003 ≈50,000 Adults **\$120.00**

Overnight Shipping Required

Leafminer Parasite - *Diglyphus isaea*

Warm-Weather Parasitoid Effective Against Multiple Species of Leafminer in Greenhouses.



Photo by: Joseph Berger © Joseph Berger

TARGET: Leafminers including florida, chrysanthemum, spinach, tomato and others.

DESCRIPTION: These tiny wasps are shipped as adults, ready for release. *Diglyphus* first stings leafminer larvae to stop the damaging life stage. After paralyzing the pest, the wasps lays eggs in the larvae parasitizing it. Under ideal conditions, this development cycle can work to build a colony in the crop. Most effective when used preventatively or with lower infestation levels. Controls 18 species and 4 genera of leafminer pests.

SUGGESTED USE: For indoor and outdoor use, release 500-1,000 per acre every 14-21 days. Release during morning or late afternoon. Monitor with blue or yellow sticky traps.

Temperature: Moderate 75-90°F **Relative Humidity:** High ≈80%

1112901 ≈ 250 Adults **\$82.00**
1112904 ≈ 500 Adults (2 x 250) **\$160.00**
1112903 ≈ 1,000 Adults (4 x 250) **\$315.00**

Overnight Shipping Required

Support local populations of pollinators and beneficials ultimately maximizing fruiting and flowering potential.

Heterorhabditis indica

Heterorhabditis indica is a heat tolerant, entomopathogenic nematode that attacks pre-pupal stages of small hive beetle in the soil. By suspending the nematodes in water and applying to the soil below and around the hive, the nematodes quickly seek out the pupal stage and attack, typically entering the pest and killing it within 24-48 hours. *H. indica* are a virulent and aggressive species of nematodes and work best when the strength of the hive is maintained.



1220200 *Heterorhabditis indica* - 5 million **\$45.00**
 *Free shipping in the contiguous 48 United States. 2nd day shipping required.

Natupol Bumblebee Hives

Put These Portable Hives Where You Need Them Most To Greatly Improve Pollination.



TARGET: For use indoors in greenhouses, hoopouses and other indoor growing, as well as smaller gardens and orchards.

DESCRIPTION: By introducing gentle bumblebees to your crops, you can improve fruit quality, increase productivity, save labor costs by reducing hand pollination and provide pollination that is independent of weather conditions. These hives house the *Bombus impatiens* species of bumblebees and contain a colony with a queen, workers and brood (pupae, eggs and larvae). The Natupol Excel and Natupol Excel Startup hives replace the now-discontinued Natupol Class-A, Class-B & Class-C hives. These new hives have carefully considered innovations in design that keep the bees comfortable inside their hives and make it easier for them to enter and exit. Both have been also developed for use under artificial light and in warmer conditions to serve crops with large numbers of flowers per sq. ft.

SUGGESTED USE:
Natupol Excel: Replaces the Natupol Class-A & Class-C hives. An ideal choice for greenhouses that operate consistently; especially so if they are at the beginning of the planting cycle before full bloom. Also excellent for consistently growing hydroponic operations. This hive may take longer to reach its maximum efficiency level than the Natupol Excel Startup, but will retain optimum performance over the course of time.

Covers 1,000-15,000 sq. ft. and last for about 9 weeks.

Natupol Excel Startup: Replaces Natupol Class-B hives. This larger size colony will provide intense pollination from day 1 and reach maximum efficiency rapidly, great for those crops that need heavy pollination in a short period of time. A wonderful choice for greenhouses that are near to or in full bloom and need thorough pollination immediately.

Covers 1,000-15,000 sq. ft. and last for about 9 weeks.

1530111 Natupol Excel **\$290.00**
1530112 Natupol Excel Startup **\$178.00**

UPS Next Day Shipping Required

Cannot be shipped to the following states: HI, OR, PR, VA

Shipments to California require that a permit application be filled out & sent to the California Department of Food & Agriculture. Please call if more information is needed.

Bee-Scent™

Bring More Bees To Your Crops With This WSDA Certified Organic Attractant.



TARGET: Honeybees.

DESCRIPTION: Applying this non-toxic, pheromone-based liquid attractant to your plants will entice honeybees to linger and forage on them. This swell in bee activity boosts pollen transfer, leading to enhanced pollination. Initial application imprints a foraging pattern on bees and they will return if their pollination window was shortened by weather. Bee-Scent contains no hive or bee products. Environmentally sound for bees, crops and applicators.

SUGGESTED USE: Apply with standard ground or aerial application units; no additives or equipment modifications needed. Two applications are recommended: first at early bloom (5-30% bloom) and second 5-8 days later (70-100% bloom). On long-blooming crops, treatments at regular intervals throughout the flowering season may be necessary. Early morning application is important. Weather must be favorable to bee flight – sunny and warmer than 60°F, with winds less than 15 mph. Standard application rate is 2 qts/acre.

1231200 Bee-Scent - 4 oz. **\$10.50**
1231202 Bee-Scent - 8 oz. **\$12.50**
1231204 Bee-Scent - 16 oz. **\$20.50**
 Case sizes available.



ARBICO Organics Good Bug Power Blend

Habitat Creating Seed Blend to Attract Pollinators & Beneficials.

1134000 1/2 lb Bag - 1,000 sq. ft. **\$4.95**
1134001 1 lb Bag - 2,000 sq. ft. **\$9.00**

PredaLure™

Attract Ladybugs, Green Lacewings & Many Other Beneficial Insects Into Your Garden.

1231316 PredaLure - 3 Pack Lures **\$22.00**
1231320 PredaLure - 10 Lures **\$41.00**
1231321 PredaLure - 25 Lures **\$85.00**

NemAttack™ Beads

Encapsulated Beneficial Nematodes

Easy, Hassle-Free Pest Control

No Refrigeration • No Mixing Required • Ready When You Need It



Beneficial Nematodes are live, microscopic organisms (non-segmented roundworms) that occur naturally in soil throughout the world. They are parasitic to insect pests that typically have a developing (larval or pupal) stage of life in the soil.

ARBICO Organics is proud to offer a large selection of Beneficial Nematodes to suit any grower's needs.

See pages 17-19 for more information.

Available as *Steinernema feltiae* and *Steinernema carpocapsae*

Apply To Soil For Control Of Target Pests:

- Borers
- Fungus Gnats
- Thrips
- Caterpillars
- Flea Beetles
- Weevils & More!



What Are Beneficial Nematodes?

Beneficial Nematodes are live, microscopic organisms (non-segmented roundworms) that occur naturally in soil throughout the world. They are parasitic to insect pests that typically have a developing (larval or pupal) stage of life in the soil; however, they have been known to also parasitize above ground stages of adults, nymphs and larvae.

NemAttack Beads Encapsulated Beneficial Nematodes

- = NemAttack *Steinernema feltiae* (Sf)
- = NemAttack *Steinernema carpocapsae* (Sc)



SINGLE SPECIES		
SKU	Size	Price
■ NemAttack Beads <i>Steinernema feltiae</i>		
5001005	≈5 million	\$40.00
5001010	≈10 million	\$47.25
5001020	≈20 million	\$62.92
5001040	≈40 million	\$94.60
● NemAttack Beads <i>Steinernema carpocapsae</i>		
5002005	≈5 million	\$40.00
5002010	≈10 million	\$47.25
5002020	≈20 million	\$62.92
5002040	≈40 million	\$94.60

Application rates vary based on pest, infestation levels and environment. See online for coverage recommendations, or call **800-827-2847**.

Free shipping in the contiguous 48 United States. 2nd day shipping required for the 5 million - 50 million sizes. Expedited shipping available for an additional fee. The 250 million & 500 million sizes require next day shipping during summer months, 2-day shipping otherwise. Orders ship Monday - Thursday; excluding holidays.

How Do Beneficial Nematodes Work?

Beneficial Nematodes are applied to soil where they locate pests, enter through orifices or body walls and infect pests with toxic bacteria. Once inside, it is not the nematode that actually kills the pest, but bacteria inside the nematode.



The bacteria kills pests within 24 to 48 hours. Beneficial Nematodes then feed on bacteria and host insect tissue. Adult stages of Beneficial Nematodes produce hundreds of thousands of new juveniles.

New infective juveniles emerge loaded with "pest killer" bacteria and begin their search for a new host. As long as their is a suitable host, the Beneficial Nematodes will continue to parasitize. Beneficial nematodes can be used around and will not harm mammals, aquatic life, birds, reptiles or amphibians.

Apply To Soil For Control Of Target Pests:

- Beetle Grubs
- Rootworms
- Leafminers
- Flies
- Thrips
- Worms
- Fungus Gnats
- Weevils
- And more!

How Do I Choose the Right Beneficial Nematodes?

Use the Selection Chart on the next page to choose the proper species by pest(s). If you are unsure which nematode to use or your target pest is not listed, please call and one of our bio-control specialists can assist. Remember Beneficial Nematodes control soil-dwelling life stages.

When & How Often Should Beneficial Nematodes Be Applied?

Use beneficial nematodes whenever larvae or grubs are present. As pest larvae feed on plant roots beneath the soil surface, severe damage can be done before you realize you have a pest dilemma. If adult insects are present, their eggs, nymphs, larvae and pupa will soon be developing.

FOR TREATMENT: Apply nematodes every 7-10 days until pest infestation subsides.

FOR PREVENTION: Apply at least 2-4 times per year in the spring, summer, fall and winter as needed.

Nematodes should be applied when *soil* temperatures are 42° - 95° F.

When Will I See Results?

Beneficial Nematodes are considered to be one of the most lethal parasites known to kill plant pests. Depending upon the pest(s) you are treating and the method of application, it can take from 2-30 days for you to see results.

It is important to remember that Beneficial Nematodes disintegrate pests from the inside out. You will not see dead insect bodies as you would with a chemical knockdown. Instead you will notice less of the pest(s) over time.

Like all insects and organisms, some nematodes will survive the winter in a dormant state; however, we recommend re-applying at least 2-4 times on an annual basis to ensure that your pests do not get out of hand again.



NemaSeek™ *Heterorhabditis bacteriophora* (Hb) Beneficial Nematodes

NemaSeek *H. bacteriophora* actively seek out larval pests and is most effective against sedentary pests, such as queen ants, asparagus beetles, bagworms, banana moths, banana weevils, berry root weevils, bill bugs, borers, carrot weevils, chafers, fleas, grubs and more!



NemaSeek™ *Heterorhabditis indica* (Hi) Beneficial Nematodes

NemaSeek *H. indica* actively seek out larval pests and has been shown to be effective against small hive beetle, fungus gnats, root weevil, western flower thrips and select grubs.



NemAttack™ *Steinernema feltiae* (Sf) Beneficial Nematodes

NemAttack *S. feltiae* nematodes are known to wait for passing pests, such as cabbage maggot, humpbacked flies, onion maggots, pill worm, raspberry crown borer, root maggots, scarids, shore flies, thrips and more!



NemAttack™ *Steinernema riobrave* (Sr) Beneficial Nematodes

These nematodes are known to wait for passing pests. NemAttack *S. riobrave* is most effective against grubs of various beetles, citrus weevil and other weevil grubs, small hive beetle and more.



NemAttack™ *Steinernema carpocapsae* (Sc) Beneficial Nematodes

These nematodes are known to wait for passing pests. NemAttack *S. carpocapsae* is most effective against mobile pests such as fleas, cutworm, fly larvae, termites and more!



NemaSeek™ *Steinernema kraussei* (Sk) Beneficial Nematodes

NemaSeek actively seek out larval pests in the soil. *S. kraussei* has been shown to be effective at cooler soil temperatures (37-86°F) against the developing stage of weevils (especially black vine weevils) and sawflies.



NEMATODE SELECTION CHART – Choose Variety By Pest

Pest	Variety	Pest	Variety	Pest	Variety	Pest	Variety
Ants (Queen)	▲	Colorado Potato Beetle	▲	Greater Wax Moth	★	Root Weevils	▲
Armyworm	●★	Corn Earworm	●■★	Grubs	▲	Scarabs	▲
Artichoke Plume Moth	●	Corn Rootworm	▲	Humpbacked Flies	■	Scarids	■
Asparagus Beetle	▲	Cotton Bollworm	●	Indian Meal Moth	★	Shore Flies	■
Bagworm	▲	Cranberry Girdler	●	Iris Borer	▲	Small Hive Beetle	★
Banana Moth	▲	Cranberry Root Weevil	▲	Japanese Beetle	▲★	Sod Webworm	●
Banana Weevil	▲	Crane Flies	■	Large Pine Weevil	●	Strawberry Root Weevil	●■★
Beet Armyworm	●■	Cucumber Beetle	●■▲	Leafminers	●■	Sugarcane Stalk Borer	▲
Berry Root Weevil	▲	Cutworm	●	May/June Beetles	▲★	Sweet Potato Weevil	■▲
Billbug	▲	Diaprepes Root Weevils	★	Mint Flea Beetle	●	Termites (Subterranean)	■★
Black Cutworm	●■★	Fall Armyworm	●	Mint Root Borer	●	Thrips	■
Black Vine Weevil	●▲★	Flea Beetle	▲	Mole Crickets	●★	Ticks	■▲
Bluegrass Weevil	●	Flea (Larvae, Pupae)	●	Navel Orangeworm	●	Tobacco Budworm	●
Cabbage Maggot	■	Flea (Adult)	▲	Onion Maggot	■	Tobacco Cutworm	■
Carrot Weevils	▲	Fly Larvae	●	Pink Bollworm	★	Vine Borers	▲
Caterpillars	●	Fruit Flies	●■	Plum Curculio	★	Webworm	●
Chafer (European, masked)	▲★	Fungus Gnats	■▲	Raspberry Crown Borer	■	Western Flower Thrips	■
Citrus Root Weevil	▲★	Gall Midges	▲	Red Flower Beetle	★	Wireworm	●
Codling Moth	●■	Grape Root Borers	▲	Root Maggots	■	Wood Borers	●

Beneficial Nematodes

- ▲ = NemaSeek™ *Heterorhabditis bacteriophora* (Hb)
- = NemAttack™ *Steinernema feltiae* (Sf)
- = NemAttack™ *Steinernema carpocapsae* (Sc)

- ★ = NemAttack™ *Steinernema riobrave* (Sr)
- ◆ = NemaSeek™ *Steinernema kraussei* (Sk)
- = NemaSeek™ *Heterorhabditis indica* (Hi)



SINGLE SPECIES		
SKU	Size	Price
▲ NemaSeek <i>Heterorhabditis bacteriophora</i>		
1220300	≈5 million	\$40.00
1220301	≈10 million	\$47.25
1220302	≈50 million	\$79.20
1221703	≈250 million	\$208.00
1221706	≈500 million	\$283.50
■ NemAttack <i>Steinernema feltiae</i>		
1220309	≈5 million	\$40.00
1220310	≈10 million	\$47.25
1220311	≈50 million	\$79.20
1221701	≈250 million	\$208.00
1221704	≈500 million	\$283.50
● NemAttack <i>Steinernema carpocapsae</i>		
1220319	≈5 million	\$40.00
1220320	≈10 million	\$47.25
1220321	≈50 million	\$79.20
1221702	≈250 million	\$208.00
1221705	≈500 million	\$283.50
★ NemAttack <i>Steinernema riobrave</i>		
1220410	≈5 million	\$45.00
◆ NemaSeek <i>Steinernema kraussei</i>		
1220420	≈5 million	\$40.00
1220421	≈10 million	\$47.25
1220422	≈50 million	\$79.20
1220423	≈250 million	\$208.00
1220424	≈500 million	\$283.50
● NemaSeek <i>Heterorhabditis indica</i>		
1220200	≈5 million	\$45.00

COMBO PACKS		
SKU	Size	Price
▲● NemaSeek Hb & NemAttack Sc		
1220331	≈10 mil. per species	\$66.00
1220332	≈50 mil. per species	\$137.50
1221699	≈250 mil. per species	\$357.00
1220335	≈500 mil. per species	\$525.00
▲■ NemaSeek Hb & NemAttack Sf		
1220333	≈10 mil. per species	\$66.00
1220334	≈50 mil. per species	\$137.50
1221700	≈250 mil. per species	\$357.00
1220336	≈500 mil. per species	\$525.00
■● NemAttack Sf & NemAttack Sc		
1220340	≈10 mil. per species	\$66.00
1220341	≈50 mil. per species	\$137.50
1220342	≈250 mil. per species	\$357.00
1220343	≈500 mil. per species	\$525.00

TRIPLE THREAT COMBO		
SKU	Size	Price
▲■● NemaSeek Hb, NemAttack Sf & NemAttack Sc		
1220328	≈5 mil. per species	\$67.00
1220330	≈10 mil. per species	\$88.00
1220329	≈50 mil. per species	\$156.20
1220327	≈250 mil. per species	\$425.25
1220326	≈500 mil. per species	\$735.00

SIZE & COVERAGE CHART

QUANTITY	COVERAGE
≈5 mil. nematodes	Treats ≈1,600 sq. ft.
≈10 mil. nematodes	Treats ≈3,200 sq. ft.
≈50 mil. nematodes	Treats ≈1 acre
≈250 mil. nematodes	Treats ≈5 acres
≈500 mil. nematodes	Treats ≈10 acres

Application rates vary based on pest, infestation levels and environment. For specific coverage recommendations, please call **800-827-2847**.



- ▲ = NemaSeek™ *Heterorhabditis bacteriophora* (Hb)
- = NemAttack™ *Steinernema feltiae* (Sf)
- = NemAttack™ *Steinernema carpocapsae* (Sc)

OMRI Listed Beneficial Nematodes



OMRI LISTED SINGLE SPECIES		
SKU	Size	Price
▲ NemaSeek Pro Hb Beneficial Nematodes		
4004010	≈10 million	\$57.20
4004050	≈50 million	\$99.00
4004250	≈250 million	\$262.50
4004500	≈500 million	\$341.25
■ NemAttack Pro Sf Beneficial Nematodes		
4006010	≈10 million	\$57.20
4006050	≈50 million	\$99.00
4006250	≈250 million	\$262.50
4006500	≈500 million	\$341.25

OMRI LISTED SINGLE SPECIES		
SKU	Size	Price
● NemAttack Pro Sc Beneficial Nematodes		
4005010	≈10 million	\$57.20
4005050	≈50 million	\$99.00
4005250	≈250 million	\$262.50
4005500	≈500 million	\$341.25

TRIPLE COMBO		
SKU	Size	Price
▲■● NemaSeek Pro Hb Beneficial Nematodes, NemAttack Pro Sf Beneficial Nematodes & NemAttack Pro Sc Beneficial Nematodes		
4007010	≈10 mil. per species	\$137.50
4007050	≈50 mil. per species	\$247.5
4007250	≈250 mil. per species	\$661.50
4007500	≈500 mil. per species	\$924.00

Free shipping in the contiguous 48 United States. 2nd day shipping required for the 5 million - 50 million sizes. Expedited shipping available for an additional fee. The 250 million & 500 million sizes require next day shipping during summer months, 2-day shipping otherwise. Orders ship Monday - Thursday; excluding holidays.



Monitoring and identifying pests with traps is the first line of defense for best intervention.

ARBICO Organics® Blue Insect Traps

Add Blue To Your Pest Control Arsenal & Cover All Your Bases.

TARGET: Thrips, leafminers.

DESCRIPTION: ARBICO Organics Blue Pest Traps are 5" x 6" gridded adhesive traps that are the perfect shade of blue to make them irresistible to Thrips and Leafminers. The color lures them in and the sticky surface holds them tight. These traps have adhesive on both sides to grab insects no matter which direction they're coming from. If you are monitoring, the gridded surface and bright color allow for easy identification and counting. When used in conjunction with the ARBICO Organics Yellow Sticky Traps, you will have the right colors to attract most common insect pests. There is a very low risk to beneficials, but some may become caught by accident.

SUGGESTED USE: For use indoors and outdoors to trap and monitor insect pests. Traps may be hung virtually anywhere, placed on the ground or anchored to a stake (not included). If hung, traps should be slightly above the plant canopy. Avoid hanging too close to sprinklers.

- For trapping in the greenhouse or garden, use roughly one trap per 10-25 square feet.
- For monitoring, use roughly 4-6 traps per acre.

1254551	ARBICO Organics Blue Insect Traps - 5 Pack	\$5.79
1254552	ARBICO Organics Blue Insect Traps - 10 Pack	\$10.99
1254553	ARBICO Organics Blue Insect Traps - 25 Pack	\$27.59
1254554	ARBICO Organics Blue Insect Traps - 50 Pack	\$54.99
1254560	ARBICO Organics Blue Insect Traps - 100 Pack	\$104.99



Using sticky traps is the easiest way to passively control plant pests such as aphids and whiteflies.

ARBICO Organics® Yellow Insect Traps

Monitoring + Trapping = Effective Pest Control

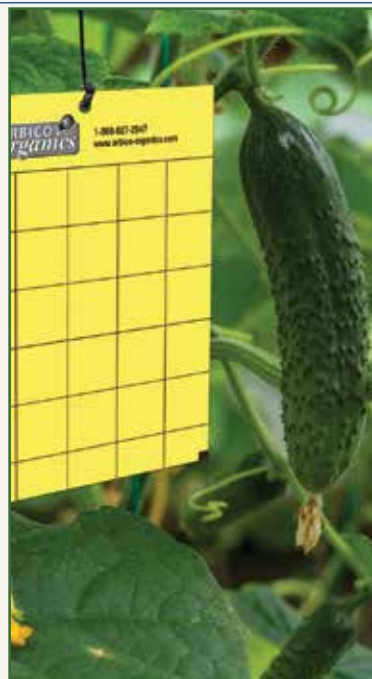
TARGET: Use against aphids, bean beetles, california laurel aphids, flea beetles, fungus gnats, greenhouse whiteflies, leafminers, psyllids, shore flies, silverleaf whiteflies, sweet potato whiteflies and more.

DESCRIPTION: ARBICO Organics Yellow Insect Traps are 5" x 6" gridded, 2-sided adhesive traps for a wide range of crawling and flying insect pests. Insects are drawn in by the bright color and are caught on the glue. Once they are trapped, the gridded surface makes it easy to count just how many have landed. Having the insects immobilized on the trap also makes it easy to identify them. There is a very low risk to beneficials, but some may become caught by accident.

SUGGESTED USE: For use indoors and outdoors to trap and monitor insect pests. Traps may be hung virtually anywhere, placed on the ground or anchored to a stake (not included). If hung, traps should be slightly above the plant canopy. Avoid hanging too close to sprinklers.

- For trapping in the greenhouse or garden, use roughly one trap per 10-25 square feet.
- For monitoring, use roughly 4-6 traps per acre.

1254501	ARBICO Organics Yellow Insect Traps - 5 Pack	\$5.79
1254502	ARBICO Organics Yellow Insect Traps - 10 Pack	\$10.99
1254503	ARBICO Organics Yellow Insect Traps - 25 Pack	\$27.59
1254504	ARBICO Organics Yellow Insect Traps - 50 Pack	\$54.99
1254510	ARBICO Organics Yellow Insect Traps - 100 Pack	\$104.99



Tanglefoot® Tangle-Trap® Sticky Coating

Create New Or Re-Use Old Traps To Control & Monitor Pest Insects.

TARGET: Ants, flies, beetles and other insects.

DESCRIPTION: This versatile brush-on adhesive is ready-to-use to control and monitor pest insects. It can be used to re-coat old traps for continued use or to coat new traps. Apply to commercially made traps or create your own from almost any non-porous material. This clear and odorless product will not interfere with any color attractants or lures you may choose to use.

SUGGESTED USE: For ease of use, use at temperatures above 60°F. Apply a thin (1/16" or 1.6 mm) coating to trap surface. Tie up your trap or attach to a stake and place in desired location in your garden, greenhouse, yard, orchard or field. Suspending traps in the air will help to avoid accidental contact with children or pets.

1266020	Sticky Coating - 8 oz. Brush-On Can	\$12.99
----------------	-------------------------------------	----------------



Yellow Sticky™ Tape

Longer Length Tape To Cover Even More Area.

TARGET: Whiteflies, aphids, leafhoppers, fungus gnats, froghoppers (spittlebugs), flies and more.

DESCRIPTION: When you have an insect population in a large area that you need to monitor and trap, this sticky tape is the choice for you. It will work well against aphids, thrips, flies, gnats and many others. Pre-coated with adhesive on both sides, this yellow tape is 530' long and comes in 4 convenient widths (2", 6", 10" & 12"), making it perfect for a variety of locations. You'll also find that the extra thick cardboard flanges and heavy duty plastic plugs make these rolls easy to work with and the product easy to dispense. You can loop these along the perimeter of fields, inside greenhouses, barns, corrals, stalls or any other area where you need insect control. Any unwanted pests or other residue can be removed with vegetable oil or CitraSolv® (available online).

SUGGESTED USE: Loop along the perimeter of fields, inside greenhouses, barns, corrals, stalls or any other area where you need insect control.

1259610	Yellow Sticky Tape - 2" wide x 530' long	\$50.00
1259611	Yellow Sticky Tape - 6" wide x 530' long	\$100.00
1259612	Yellow Sticky Tape - 10" wide x 530' long	\$150.00
1259613	Yellow Sticky Tape - 12" wide x 530' long	\$200.00

*Larger quantities available.



Blue & Yellow Sticky Ribbon Rolls

Blue Is For Thrips & Leafminers, Yellow Is For Aphids & Whiteflies.

TARGET: Western Flower Thrips, Bean Thrips, Spinach Leafminers, California Laurel Aphid, Greenhouse Whitefly, Mexican Bean Beetle and more.

DESCRIPTION: These sticky ribbon rolls are an effective way to trap and monitor insects in large growing areas. Install around the perimeter of your garden or greenhouse and, since they are double-sided, they will trap insects coming and going. They can also be placed along the ground to catch crawling insects. Blue attracts thrips and leafminers and yellow attracts aphids, whiteflies and other soft-bodied insects. Pheromone lures or essential oils can be added to increase catch potential.

SUGGESTED USE: For best results, install the trap at the time of planting as a preventative treatment. Rolls can remain in place until the trapping surface is fully covered with insects or debris. It can be wrapped around fenceposts or stakes that are driven into the ground, or it can be attached to greenhouse posts with staples or string.

1254420	Blue Sticky Ribbon Roll - 6" W x 328' L	\$60.00
1253220	Yellow Sticky Ribbon Roll - 6" W x 328' L	\$60.00
1254425	Sticky Ribbon Roll Bundle - 6" W x 328' L (1 of ea.)	\$115.00



Sticky Traps

1254001	Package of 5 Yellow Traps	\$5.50
1254101	Package of 5 Blue Traps	\$5.50

Stiky Strips

1254301	Stiky Strips Traps - 9 pk	\$5.49
1254302	Stiky Strips Traps - 9 pks, Bundle of 5	\$25.00
1254303	Stiky Strips Traps - 9 pks - Bundle of 10	\$43.92

Stiky Plant Stakes

1254320	10 pk	\$3.95
1254321	3 - 10 pks	\$10.25
1254322	5 - 10 pks	\$14.75

Plan your biological control intervention for early spring before overwintering grubs hatch.



**NemaSeek™ Hb & NemAttack™ Sr
Beneficial Nematodes**

Control Soil Pests in Turf & Garden

Beneficial Nematodes are one of nature's most powerful weapons available for managing Japanese Beetle infestations. Along with parasitizing the beetles in their larval, underground damaging stages, they also parasitize the larval states of other pest grubs, weevils, fleas, leafminers and more. Apply with a watering can, hose end sprayer or backpack sprayer. See pages 16-19 for more information.



NemaSeek *Heterorhabditis bacteriophora*

1220300	≈5 million	\$40.00
1220301	≈10 million	\$47.25
1220302	≈50 million	\$79.20

NemAttack *Steinernema riobrave*

1220410	≈5 million	\$45.00
----------------	------------	----------------



grubGONE!® G

OMRI Listed. Targeted Grub Control in Grass & Ornamentals.



DESCRIPTION: This organic biopesticide uses the naturally occurring soil bacterium *Bacillus thuringiensis subsp. galleriae*, Strain SDS-502 to thoroughly control several of the most damaging of evasive grub species. grubGONE! G is effective against 1st instar grubs; but (unlike many other Bt products) it is equally effective against 2nd and 3rd instar stages. This versatility means that grubGONE! G can be used early in the season as a preventative remedy or as a curative treatment for grub control throughout the season.

SUGGESTED USE: 10 lb. bag covers over 4,000 sq. ft. Uniformly broadcast grubGONE! G over the area being treated. Maintain adequate soil moisture for optimum performance, without letting it become too wet or dry. Apply when insects are present. Additional applications may be made no earlier than 7 days after the preceding application. Apply 2 lb. 5 oz. to 3 lb. 7 oz. of product per 1,000 sq. ft. of turf grass

1216100	grubGONE! G – 10 lb. bag	\$69.99
1216105	grubGONE! G – 40 lb. bag	\$219.99



JAPANESE BEETLE CONTROL

Milky Spore Powder

Specific, Long Lasting Larval Control.

TARGET: Japanese beetle grubs

DESCRIPTION: Contains *Bacillus popilliae* bacterium, lethal to soil-borne grub stages of Japanese beetles. Grubs that normally feed on roots of grass and vegetables will ingest the bacterium, which will cause death in about 1-3 weeks. As grubs decompose they re-release bacteria spores. The spores can remain in the soil for about ten years, and in some cases up to 20 years. In warmer climates, control can occur in 1-3 years (after one application) and in cooler climates, 3-5 years. Can apply with other fertilizers, will not harm animals and can be applied to food crops. For best results, apply with NemaSeek Hb Beneficial Nematodes (see pages 16-19), which will aid in spreading the bacterium to grubs. Store in a cool dry place to maintain shelf life.

SUGGESTED USE: Use All-Purpose Dispenser Tube for easy application (see online). White chalk carries the bacterium, and the resultant treated area should resemble a checkerboard. Water within about 48 hours for about 15-20 minutes to permeate into soil and do not mow or rake until thoroughly soaked. Apply about 1 tsp., every 4 ft., in rows 4 ft. apart. 10 oz. covers ≈2,500 sq. ft., 40 oz. covers ≈1/4 acre, 50 lbs. covers ≈4.5 acres.

1216001	Milky Spore Powder - 10 oz. - Covers ≈2,500 sq. ft.	\$34.99
1216040	Milky Spore Powder - 40 oz. - Covers ≈1/4 acre	\$93.49
1216045	Milky Spore Powder - 25 lb. Drum - Covers ≈2.25 acres	\$879.00
1216052	All-Purpose Dispenser Tube	\$14.50

Cannot be shipped to the following states: CA, OR, WA



Control multiple damage causing life-stages with biorational sprays.

GRUB & BEETLE CONTROL



AzaGuard®

This Product Works On A Wide Range Of Ornamental, Forestry, Food & Non-Food Crops.

1222204	AzaGuard - 32 oz.	\$275.00
1222206	AzaGuard - Gallon	\$1,000.00

See page 31 for more information.



BioCeres® WP

This Versatile Biopesticide Can Be Used In A Tank Mix Or As A Stand-Alone.

1332891	BioCeres WP - 1 lb. Bag	\$87.00
----------------	-------------------------	----------------

See page 29 for more information.



BotaniGard® MAXX

Beauveria bassiana & Pyrethrins Make A Powerful Team!

1341040	BotaniGard Maxx - Gallon	\$365.00
----------------	--------------------------	-----------------

See page 29 for more information



BotaniGard® 22WP

Beauveria bassiana Mycoinsecticide Wettable Powder

1341000	BotaniGard 22WP - 1 lb.	\$95.00
----------------	-------------------------	----------------

See page 28 for more information.



BEETLE CONTROL

BONIDE® Captain Jack's™ Neem Max

Powerful Cold Pressed Neem Oil In A 4-in-1 Formulation.

1246610	Captain Jack's Neem Max - 8 oz. Conc.	\$14.29
----------------	---------------------------------------	----------------

See page 28 for more information.



Molt-X®

An Excellent Spray With Multiple Modes of Insecticidal Action.

1332771	Molt-X - Quart	\$275.00
----------------	----------------	-----------------

See online for more information.



beetleGONE!® tlc

Highly Effective Strain of Bacteria Controls Adult Beetles, Weevils & Borers

1216200	beetleGONE! tlc – 8 oz	\$34.99
1216201	beetleGONE! tlc – 1 lb	\$69.99
1216202	beetleGONE! tlc – 5 lb	\$239.99

See online for more information.



PyGanic® Gardening

Rapid Knockdown & Kill For Outdoor Pests In Your Garden.

1288710	PyGanic Gardening - 8 oz.	\$29.98
1288720	PyGanic Gardening - 32 oz.	\$67.98

See page 31 for more information.



Timing and life stage are critical factors when controlling caterpillars. These pests can ravage crops quickly.



Moth Egg Parasites - *Trichogramma spp.*

Trichogramma are tiny parasitic wasps that target the eggs of over 200 *Lepidopteran* species that become plant damaging caterpillars. Trichogramma prevent caterpillars, stopping crop damage before it even begins. ARBICO Organics offers multiple species and delivery options for targeted and timely application.

CONTROLLED RELEASE - DISPENSERS:

≈7,500 - 3 Dispensers	\$20.00
≈12,500 - 5 Dispensers	\$25.00
≈25,000 - 10 Dispensers	\$37.50

CONTROLLED RELEASE - CAPSULES:

≈5,000 - 5 Capsules	\$20.00
≈10,000 - 10 Capsules	\$30.00
≈30,000 - 30 Capsules	\$37.50

See page 13 for more information and options.

BONIDE® Thuricide

Caterpillar Targeting *Bacillus thuringiensis var. kurstaki*

TARGET: Control of caterpillars.

DESCRIPTION: Use Thuricide to control caterpillars that are causing excessive damage. This easy to mix and easy-to-use liquid can be sprayed on any plant that you would like to protect. Can be used on fruits, vegetables and ornamentals and can be used up to the day of harvest. Use weekly until the infestation is under control.

SUGGESTED USE: Easy-to-use for all spray applications, just mix 1-4 tsp. per gallon of water and apply to plants. It is important to target the underside and top of leaves to ensure good coverage. The mix rate you use is dependent on the level of infestation – there is no harm to the plant if you use a stronger mix rate.

1201205	BONIDE Thuricide RTU - Quart	\$14.99
1201206	BONIDE Thuricide RTU - Gallon	\$43.99
1201202	BONIDE Thuricide Liquid Concentrate - 16 oz.	\$19.99

Monterey B.t.

An Easy-To-Use Solution For Controlling Caterpillars, Loopers & More!

TARGET: Cabbage looper, imported cabbage worm, tomato hornworm and bagworm, spring cankerworm, fall cankerworm, spongy moth, tent caterpillar, elm spanworm and fall webworm on trees and ornamentals.

DESCRIPTION: This biological insecticide contains *Bacillus thuringiensis* subspecies *kurstaki* strain SA-12 solids, spores and *Lepidopteran* active toxins that when eaten by worms or caterpillars will halt feeding, resulting in death. When used as directed, it will not affect birds, earthworms or beneficial insects such as honeybees and ladybugs.

SUGGESTED USE: Apply when infestations are in first stages, making applications every 5-7 days until control is reached. Apply directly to all sides of foliage that is being affected by target pest. Fully mix with water and continue agitation during applications and reapply if heavy rain occurs after application. For fruits and vegetables, mix about 2-3 fl. oz. per gallon of water for about 1,000 sq. ft. For ornamentals and trees, mix about 2 fl. oz. per 3 gallons of water. Now available in no-dilute Ready-To-Use and Ready-To-Spray versions.

1201213	Monterey B.t. - 32 oz. RTU	\$16.99
1201214	Monterey B.t. - 32 oz. Hose-End RTS	\$29.99
1201209	Monterey B.t. Concentrate - 8 oz.	\$14.49
1201210	Monterey B.t. Concentrate - Pint	\$16.99
1201211	Monterey B.t. Concentrate - Quart	\$27.99
1201212	Monterey B.t. Concentrate - Gallon	\$105.49

Cannot be shipped to the following states: SKUs 1201213 (RTU), 1201214 (RTS): ND, WY

Utilize a combination of biological control (*Trichogramma*), biorational sprays (Btk) and traps for total control.



Monterey Garden Insect Spray

Insect Pests Don't Stand A Chance With This Spinosad Product!

TARGET: Caterpillars, leafminers, thrips, fire ants and other pests as listed on the label.

DESCRIPTION: This OMRI listed spray is made with Spinosad and is specially formulated for use in home environments such as gardens, lawns, ornamentals, shrubs, trees and non-commercial greenhouses. The Spinosad in this spray works on insects' nervous systems, causing paralysis and death within 1-2 days. Because the insects are paralyzed, they may remain stuck on the plants and be mistaken for live insects; we recommend you check your plants 2-3 days after spraying to re-evaluate your control. Not for commercial use.

SUGGESTED USE: Apply when listed pests are present. Thoroughly spray and drench all plant foliage until wet, taking care to include undersides of leaves. Repeat applications may be made as indicated in the "Use Restrictions" section of the label. **Toxicity:** This product is toxic to bees for 3 hours following treatment. This product is also toxic to aquatic invertebrates such as insects, crustaceans, mollusks and worms.

1257907	Monterey Garden Insect Spray - 32 oz. RTU	\$15.49
1257906	Monterey Garden Insect Spray Conc. - 32 oz. RTS	\$45.99
1257901	Monterey Garden Insect Spray Conc. - 8 oz.	\$16.99
1257900	Monterey Garden Insect Spray Conc. - Pint	\$24.99
1257905	Monterey Garden Insect Spray Conc. - Quart	\$42.99
1257910	Monterey Garden Insect Spray Conc. - Gallon	\$151.49

Cannot be shipped to the following states: DC (Concentrate only)

BT NOW®

An Extremely Effective Biopesticide That Controls Crop-Damaging Caterpillars.

TARGET: Armyworms, bagworms, borers, budworms, caterpillars, earworms, leafrollers, loopers, Spongy Moth larvae, webworms and more.

DESCRIPTION: Uses a strain of *Bacillus thuringiensis kurstaki* to provide broad spectrum control for a long list of *Lepidopteran* pests that feed on a wide variety of plants. Carefully monitor your crops to identify target pest infestations and apply as soon as insects are found or when there are first signs of feeding. Water-based formula, stabilized with UV inhibitors with low resistance potential. Will not harm pollinators or beneficials. 4-hour REI. Compatible with many commonly used fertilizers, pesticides and adjuvants.

SUGGESTED USE: Apply when larvae are small, newly hatched and actively feeding. Do not apply through any irrigation system. Can be used diluted or un-diluted. Dilution with minimal amounts of water will improve coverage. The amount of water needed for a diluted application will depend on crop size, weather, spray equipment and local experience. Please see manufacturer's label for pest and crop specific application rates and guidelines.

1201222	BT NOW - 2.5 Gallon Concentrate	\$170.00
----------------	---------------------------------	-----------------

Cannot be shipped to the following states: DC

DiPel® Pro DF & DiPel® DF

OMRI Listed *Bacillus thuringiensis v kurstaki* (Btk) To Control Most *Lepidopteran* Insects.

TARGET: Caterpillars, armyworms, bagworms, budworms, loopers, Spongy Moth larvae, earworms and webworms.

DESCRIPTION: This dust-free, flowable powder bioinsecticide works quickly; pests will stop feeding within the hour and die in a few hours to 3 days. Use the smaller-sized DiPel PRO DF for ornamentals and small edibles. The larger-sized DiPel DF is meant for agriculture production. People, beneficials, birds, fish and wildlife are not affected by DiPel.

SUGGESTED USE: Can be used indoors and outdoors. Best if used while larvae are actively feeding but before plants are damaged. Small scale applications: Mix 1/2-4 tsp./gal. of water. Or use 1/4-2 lbs./acre. Repeat applications every 3-14 days. Add a spreader-sticker on hard-to-wet crops and to improve spray efficacy in poor weather conditions.

1207005	DiPel Pro DF - 1 lb.	\$25.50
1207006	DiPel DF - 1 lb.	\$24.75
1207004	DiPel DF - 5 lbs.	\$119.50



Powerful sprays offer multiple benefits as insecticides, fungicides and/or miticides for broad spectrum control.

MULTI-PURPOSE

Organic JMS Stylet-Oil®

Smother Pests & Mites and Fight Fungus & Disease Every Season!

TARGET: Powdery mildew, mites, whiteflies, leafminers and insect transmitted diseases.

DESCRIPTION: Use this multi-purpose, year-round fungicide, insecticide and antiviral spray oil in greenhouses, on field crops and on fruit trees. Kills powdery mildew on contact and prevents occurrence for up to 14 days and controls mites, whiteflies and leafminers. Made from paraffinic oil and is colorless, tasteless and odorless. 4-hour re-entry interval; no pre-harvest interval.

SUGGESTED USE: For gardens, apply approx. 3 Tbsp./gal. water with a sprayer. For larger areas, apply about 1-2 gal./100 gal. water and use 25-150 gal. of dilute/acre depending on crop, timing and desired treatment. Apply weekly or bi-weekly depending on severity of condition. Begin at the onset of plant growth, fungus emergence, disease and insect infestation. See label online for detailed rates and instructions.

- 1274107** Organic JMS Stylet-Oil - Gallon **\$38.50**
- 1274108** Organic JMS Stylet-Oil - 2.5 Gallons **\$60.00**

*Call for freight quote. Larger sizes available.

Cannot be shipped to the following states: DC, IN, KS, KY, LA, MA, MS, MT, PA, PR, SD, UT, WY

The Amazing Doctor Zymes Eliminator

Use This Year Round For Pest & Mildew Free Plants.

TARGET: Aphids, thrips, fungus gnats, mites, root aphids and whiteflies. Also eliminates fungus, molds and mildew.

DESCRIPTION: This OMRI listed product is made with naturally occurring organic materials and citric acid to produce a multiple action fungicide/miticide. As a miticide, it works by interfering with the pest's ability to breathe, fatally breaking down protein and organic materials in eggs and acting as a deterrent. As a fungicide, the citric acid destroys the biomass of the spores and alters the pH to create an environment hostile to growth. Best when used preventatively.

SUGGESTED USE: Dilute with warm water. Larger volume applications: 1/2 cup/gal water. For severe infestations: 1/2 cup/gal water every 3rd day. Powdery Mildew/weak solution: 0.5 oz/31.5 oz water. Soft bodied insects/medium solution: 1-1.5 oz/31 oz water. Infestations/strong solution: 2-2.5 oz/30 oz water. Preventative: seeds/transplants: 0.5-1 oz/qt water; soil amendment: 1 cup/5 gals water; foliar spray: 1/2 cup/1 gal water.

- 1459200** The Amazing Dr. Zymes Eliminator - Quart RTU **\$15.82**
- 1459201** The Amazing Dr. Zymes Eliminator - Quart Conc. **\$39.69**
- 1459202** The Amazing Dr. Zymes Eliminator - Gallon Conc. **\$142.32**

Larger sizes available.

Cannot be shipped to the following states: DC, ID, IN, KS, LA, ME, MS, NE, ND, PR

Organocide® Bee Safe 3-in-1 Garden Spray

This Multi-Purpose, OMRI Listed Garden Spray Will Not Harm Bees, Ladybugs Or Butterflies.

TARGET: Soft-bodied insects, spiders and other mites, scale, powdery mildew, downy mildew, spot diseases and more.

DESCRIPTION: This unique blend of potassium sorbate, sesame oil, lecithin and edible fish oil work as an insecticide, miticide and fungicide. It contains no petroleum solvents. Organocide is effective against soft-bodied insects, spider mites and scale insects, but it also controls many common fungal diseases, like powdery mildew, downy mildew and spot diseases. Can be used on most crops grown indoors and outdoors, but do not use the concentrate indoors. 0-hr REI & 0-day.

SUGGESTED USE: Spray to run-off, making sure tops & bottoms are covered. Spray early morning or late evening and allow 3-4 hrs. for product to dry. Do not apply when temps are over 95°F. For control: 1 application. For maintenance: Once a month. Severe problems: 2 applications 3 days apart. Concentrate: Dilute 3 oz/gal water or 1 oz/gal water for severely stressed or damaged plants. Use a sprayer that puts out a fine spray.

- 1150050** Organocide 3-in-1 Garden Spray - 24 oz. RTU **\$12.21**
- 1150055** Organocide 3-in-1 Garden Spray - 16 oz. Conc. **\$16.48**
- 1150056** Organocide 3-in-1 Garden Spray - 32 oz. Conc. **\$23.78**
- 1150058** Organocide 3-in-1 Garden Spray - Hose-End 32 oz. **\$31.87**
- 1150059** Organocide 3-in-1 Garden Spray - Gallon Conc. **\$86.19**

Larger sizes available.

Cannot be shipped to the following states: AL, AK, AR, CO, DC, DE, ID, IN, IA, KS, KY, LA, ME, MD, MS, NM, NC, ND, RI, SC, SD, UT, VA, WV, WI, WY

SuffOil-X®

OMRI Listed Pre-Emulsified Mineral Oil Suffocates Many Soft-Bodied Insects & Controls Certain Fungal Diseases.

TARGET: Aphids, cankerworms, leafhoppers, leafrollers, mealybugs, mites, plant bugs, psyllids, soft scales, webworms, whiteflies, rust and powdery mildew.

DESCRIPTION: Made with refined pre-emulsified mineral oil, this suffocant creates the best coverage with limited risk of plant damage. Using a pre-emulsified creates a lighter oil that dries faster, will not cause phytotoxicity, burn or undue stress, leaves no toxic residue on plants and dilutes easily with water.

SUGGESTED USE: Can be used with a wide variety of crops indoors or outdoors. Apply when oil will dry and evaporate in 1-2 hours and when relative humidity is less than 90%. Application rates are generally 1-2 gallons of SuffOil-X per 100 gallons of water or 20-500 gallons of spray solution per acre.

- 1332805** SuffOil-X - 2.5 Gallons **\$105.00**
- 1332806** SuffOil-X - Case of 2 ct./2.5 Gals. **\$189.00**

Shipping Restrictions: AK, DC

These newest/latest insecticides are some of the most efficient solutions to control plant pests.



PRINCIPLE™ WP

OMRI Listed. A Superior Beauveria bassiana Formulation.

TARGET: Common soft-bodied insects like Whiteflies, Thrips and Aphids. Also effective on harder to control insects like Psyllids, Mealybugs, Beetles, Weevils and even Grasshoppers.

DESCRIPTION: Principle WP is an excellent choice for all kinds of growers. It's active ingredient, *Beauveria bassiana*, has been used in biocontrol for decades with great success. This exceptional low-dust, wettable powder formulation offers best-in-class efficacy combined with improved mixability for better application and use. Scant leaf residue. No risk of resistance development and no known phytotoxicity. 4-hr REI, 0-Day PHI.

SUGGESTED USE: Can be used on cannabis, hemp, turf, ornamentals, food and non-food crops in greenhouses or fields. Aerial, ground, drip, dip and spay applications. Great compatibility with other inputs. Apply at first sign of infestation. No limit to the number of applications per season. For whitefly and aphid infestations on food and non-food crops: 0.5-1 lb. per 100 gals. of water. For thrips: 1-2 lbs. per 100 gals. water. See product label or the DOCS tab on our website for more specifics.

- 1342000** Principle WP **\$90.00**

Cannot ship via USPS.



EpiShield® O

Delivers a Powerful Punch of Essential Oils with Lower Application Rates!

TARGET: Aphids, Mealybugs, Mites, Spider Mites, Thrips and Whiteflies

DESCRIPTION: EpiShield O, an advanced miticide and insecticide, offers growers unparalleled convenience. Its concentrated blend of peppermint (15%) and clove (10%) oils ensures high pest mortality rates with minimal application. Versatile for use indoors and outdoors, it effectively suppresses mites, aphids, whiteflies, mealybugs, and thrips across a variety of crops. Lower application rates allows flexibility in timing and is perfect for spot sprays. With no known risks of resistance or residue tolerance, it's an efficient solution in agriculture and commercial settings.

SUGGESTED USES: Dilute 9-12 fl oz per 100 gallons per acre for foliar applications. Use immediately and agitate the solution regularly. Spray top and bottom of leaf canopy until wet but without runoff. Repeat applications at 5-7 day intervals as needed. See label for dip application instructions.

- 1332786** EpiShield O – 36 oz. **\$300.00**
- 1332788** EpiShield O – 2.5 Gal **\$2,304.00**



Cintro™ Insecticidal Soap

OMRI Listed. Contact Insecticidal Soap for Fast, Effective Control.

TARGET: Aphids, Mealybugs, Mites, Scale, Spider Mites, Thrips, Whiteflies and more.

DESCRIPTION: OMRI Listed Cintro Insecticidal Soap works by dissolving the insect's cuticle and disrupting its cell membranes, resulting in death. This contact-based solution, formulated with potassium salts of fatty acids, once dried, leaves no residual insecticidal activity. This means minimal impact on beneficial organisms and seamless integration into IPM programs. It delivers dependable contact control exactly when and where it is needed. Beneficials can be released as soon as sprays have dried.

SUGGESTED USE: Apply at the first sign of pest infestation. Use at a rate of 1-2% of solution for field and greenhouse plants. Thoroughly spray all parts of plants including underside. Insect must come in contact with liquid spray. Spray early morning, evening or when overcast. Limit 3 consecutive applications. See labels online for any/all restricted plant usage.

- 1247655** Cintro Insecticidal Soap – 2.5 gals **\$165.00**
- 1247656** Cintro Insecticidal Soap – 2.5 gals – Case of 2 **\$297.00**

Cannot be shipped to the following states: CA, IN

Utilize the power of natural resources through minerals, botanical extracts and soaps to control pests.

Garlic Barrier®

Protect Your Plants With Garlic!

TARGET: Ants, aphids, armadillos, armyworms, beetles, birds, caterpillars, deer, grasshoppers, leafhoppers, leafminers, loopers, mealybugs, mites, rabbits, sawflies, whiteflies and wireworms.

DESCRIPTION: Made from 10% garlic extract, when absorbed by plants it helps to protect them from pest insects, repelled by the smell and taste. The garlic odor diminishes about 30 minutes and will not alter taste.

SUGGESTED USE: Apply weekly. For nematode and grub control, spray seeds before planting. For foliar applications, apply before noon for best results. Mix at a rate of 1 cup/ 10 cups water to cover about 15,000 sq. ft.

1452602	Garlic Barrier - Quart	\$18.97
1452603	Garlic Barrier AG+ - Gallon**	\$79.99

**AG+ is OMRI listed and WSDA Certified. Call for larger sizes.

Cannot be shipped to the following states: AK, AL, AR, DC, DE, IA, ID, KS, KY, LA, MS, ND, SC, WA, WV, WY

SNS Systemica Insect Killer

Delivers Multiple Modes of Action for Maximum Control.

TARGET: Ants, Aphids, Gnats, Mealybugs, Mites, Scales, and Whiteflies.

DESCRIPTION: SNS Systemica Insect Killer is an organic, OMRI-listed insecticide made from food-grade botanical extracts. It works on contact, as a barrier, as a systemic insecticide, and as root drench. After Systemica is applied, it will kill and repel any insects it comes into contact with at that time. As it is doing this, Systemica is being absorbed into the plant cell walls and distributed throughout its system providing long-lasting protection as well as acting as a preventative control. Can be used indoors and outdoors.

SUGGESTED USE: Available as a hose-end concentrate or a ready to use spray. Hose-End: Shake well before use. Attach nozzle to hose and spray desired plant foliage. RTU: Shake well before use. Do not dilute. Spray plant surface or root zone as needed. Repeat every 7-10 days.

1459110	SNS Systemica Insect Killer – Hose-End – 32 oz.	\$24.99
1459111	SNS Systemica Insect Killer RTU – 32 oz	\$19.99



Monterey Neem Oil

Effective Against Indoor And Outdoor Insect Pests & Fungal Diseases!

TARGET: Use as an insecticide/miticide and/or fungicide on a wide range of ornamental plants, vegetables, trees and shrubs, as well as fruit and nut crops.

DESCRIPTION: Insecticide/Miticide Use: Controls spider mites, aphids, whiteflies, scale, beetles, leafrollers and other insect pests. **Fungicide Use:** Effective against powdery mildew, black spot, downy mildew, anthracnose, rust, leaf spot, *Botrytis*, needle rust, blights and *Alternaria*.

SUGGESTED USE: Insecticide/Miticide Use: Mix rate: 1-2 oz./gallon of water. Thoroughly spray all plant surfaces (including the undersides of leaves) until wet. **Fungicide Use:** Apply every 7-14 days; for heavy infestation, apply every 7 days. Use 1 oz./gallon of water & thoroughly spray all plant surfaces until wet. Apply on a 7-14 day schedule until control is achieved.

1555615	Monterey Neem Oil - 32 oz. RTU	\$15.99
1555616	Monterey Neem Oil - 16 oz. RTS	\$36.99
1555613	Monterey Neem Oil - 8 oz. Concentrate	\$18.49
1555614	Monterey Neem Oil - Pint Concentrate	\$32.99
1555618	Monterey Neem Oil - Gallon Concentrate	\$178.49

RTU (1555615) cannot be shipped to the following states: WY

BONIDE® Captain Jack's™ Neem Max

Powerful Cold Pressed Neem Oil In A 4-in-1 Formulation.

TARGET: Aphids, grasshoppers, beetles, leafhoppers, thrips, borers, leafminers, caterpillars, mealybugs, weevils, flies, gnat, psyllids, wireworms, whiteflies, soil fungal diseases and much more.

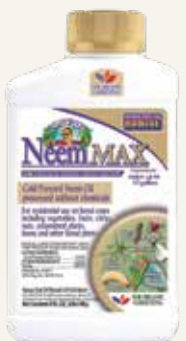
DESCRIPTION: Made with 70% cold pressed neem oil, this product works as a repellent, a suffocant, an anti-feedant, an insect growth regulator by disrupting the growth/molting process and as a poison if ingested. As a fungicide this product will inhibit mycelial growth by coating the spores, which prevents further spore development. This product will not kill fungal pathogens outright, it will only inhibit further develop so it is crucial to treat the area ahead of a severe infestation. Kills the eggs, larvae & adults.

SUGGESTED USE: Can be applied as a foliar spray or soil drench. Insect & mite control: Apply at 0.625-1.8% in a 7-10 day interval. Disease control: Use 1.2-1.8% with a 10-14 day interval. Soil use/nematode control: Use at 1.2-2.4% with a 10-14 day interval.

1246610	Captain Jack's Neem Max - 8 oz. Conc.	\$14.29
1246611	Captain Jack's Neem Max - 16 oz. Conc.	\$20.99

Also available in Ready to Use and Ready to Spray sizes (see online).

Cannot be shipped to the following states: PR



This powerful fungus targets foliar pests such as aphids, whiteflies and thrips once ingested.

BotaniGard® ES & 22WP *Beauveria bassiana* Strain GHA



Controls A Wide Variety Of Soft-Bodied Insects In Greenhouse, Field & Nursery.

TARGET: A wide variety of soft-bodied insects such as whiteflies, thrips, aphids, psyllids, mealybugs, scarab beetles, plant bugs and weevils.

DESCRIPTION: BotaniGard is a natural contact insecticide that contains the mycoinsecticide – *Beauveria bassiana* Strain GHA, which controls many varieties of soft-bodied insects in greenhouse, field and nursery crops.

SUGGESTED USE: Thorough coverage is required to achieve control. Apply in 7 day intervals. However, if pest population is high, it can be applied in 3-5 day intervals totaling 3 applications.

Application Rates of BotaniGard ES

- For whiteflies and aphids, use about .5-1 quart per 100 gallons of water.
- For thrips, use about 1-2 quarts per 100 gallons of water.
- For other insects, use about .5-2 quarts per 100 gallons of water.
- If applying as a high or low volume spray, use up to 3 quarts per 100 gallons of water to cover an area of 5,000-20,000 sq. ft.

Application Rates of BotaniGard 22WP

- For whiteflies and aphids, use .5-1 lb. of BotaniGard 22WP per 100 gallons of water.
- For thrips, use 1-2 lbs. of BotaniGard 22WP per 100 gallons of water.
- For other labeled insects, use .5 to 2 lbs. of BotaniGard 22WP per 100 gallons of water.
- Rate depends upon infestation level, consult package instructions before application.

BotaniGard ES

1341020	BotaniGard ES - Gallon	\$360.00
----------------	------------------------	-----------------

BotaniGard 22WP

1341000	BotaniGard 22WP - 1 lb. Powder	\$95.00
----------------	--------------------------------	----------------

Case sizes available. **Shipping Restrictions:** Cannot ship via US Mail.



BioCeres® WP



This Versatile Biopesticide Can Be Used In A Tank Mix Or As A Stand-Alone.

TARGET: Aphids (*Aphidoidea*), whiteflies (*Aleyrodoidea*), thrips (*Thysanoptera*), plant bugs (*Lygus lineolaris*), spotted wing drosophila (*Drosophila suzukii*), borers, beetles and weevils.

DESCRIPTION: This OMRI Listed biopesticide uses the power of *Beauveria bassiana* to control insects in developing and adult stages. Upon application, the spores will adhere to and begin penetrating the insect's outer shell. Once inside the insect, the spores will continue to multiply until they reach its hemolymph (blood). When the spores encounter the blood they will begin feeding on it. Death will occur in 7 to 14 days. 0 pre-harvest interval and 4-hour REI.

SUGGESTED USE: Repeat at 5-7 day intervals as needed. Apply 1-3 lbs. per acre, according to the density of the insect population. For conventional air and ground applications, use at least 50 gallons of spray volume per acre. Thoroughly cover plant foliage with spray solution, but not to runoff.

1332891	BioCeres WP - 1 lb. Bag	\$87.00
----------------	-------------------------	----------------

Case sizes available.



BotaniGard® MAXX

Beauveria bassiana & Pyrethrins Make A Powerful Team!

TARGET: Whiteflies, aphids, thrips, psyllids, spider mites, mealybugs, leafhoppers, weevils, borers and other leaf-feeding insects.

DESCRIPTION: This potent biorational formulation provides a quick knock-down of insect and mite pests. The two active ingredients, *Beauveria bassiana* and Pyrethrins, work independently, yet in harmony, to provide multiple mechanisms to kill harmful insects. The pyrethrins will attack the nerve cells of the insect and the *Beauveria bassiana* strain GHA fungal spores penetrate an insect's protective cuticle and destroy it from within.

SUGGESTED USE: Can be applied at a rate of up to 2 quarts per 100 gallons of water, however most target insects can be controlled at a rate of 1 quart per 100 gallons of water, 1/2 quart per 50 gallons of water or 1 pint per 25 gallons of water. For best results, use as soon as insect pests are spotted, before their population becomes too large. Results can generally be seen within 2-5 days after the first spraying. Do not reapply within 3 days, unless the infestation is extreme. If this is the case, wait 24 hours for reapplication.

1341040	BotaniGard MAXX - Gallon	\$365.00
----------------	--------------------------	-----------------

1341050	BotaniGard MAXX - 2.5 Gallons	\$710.00
----------------	-------------------------------	-----------------

Larger & Case sizes available.



Botanical extracts are one of the oldest form of pest control using Rosemary, Thyme, Clove and other oils.

NoFly™ WP

This Aggressive Fungus Controls Soft-Bodied Insects & Hard-To-Kill Livestock Pests.

TARGET: Aphids, Bagrada bugs, beetles (including darkling, litter, carrion & hide), fungus gnats, gnats, grasshoppers, leaf hoppers, locust, lygus bugs, mealybugs, mites (including russet, spider & chicken), Mormon crickets, northern fowl mites, plant bugs, psyllids, red poultry mites, thrips, weevils, and whiteflies.

DESCRIPTION: This organic wettable powder mycoinsecticide contains spores of the entomopathogenic fungus *Isaria fumosorosea* strain FE 9901. This naturally occurring fungus is a common and aggressive predator of insect pests but is not a plant pathogenic organism and will not adversely affect beneficials (including bees). When the spores come into contact with the insect pest, they will immediately attach themselves to the body. As they grow, they will penetrate the host insect's body and disrupt the normal functions of the insect's internal organs and tissues. It will stop feeding within 24 hours and die in 3-7 days. Effective against all life stages of insect pest.

SUGGESTED USE: Can be used as a foliar, soil or hydroponic application. Rates for crops: Foliar: 1/2-2 lb/ acre or 2-8 oz/ 11,000 sq. ft. at a minimum of 0.1% solution. Soil: 14-28 oz/100 gals water at a rate of 1 gal of solution per cu ft of growing media or 6-12 oz/5-10 gals water/yard of soil. Hydroponics: 6-16 oz/100 gals water. Rates for turf: 1/2- 2 lb/ acre or 2-8 oz/11,000 sq. ft. applied at a minimum of 0.1% solution. Rates for poultry houses & livestock barns: 1-3 oz/12 gals water.

1332875	NoFly WP - 8 oz.	\$67.78
1332876	NoFly WP - 2 lbs.	\$225.99
1332877	NoFly WP - 20 lbs.	\$1,100.00

Cannot be shipped to the following states: AK, DC

Essentria® IC Pro

Handles Most Crawling & Flying Insects Most Anywhere You Find Them.

TARGET: Ants, aphids, American cockroach nymphs, beetles, box elder bugs, crickets, earwigs, face flies, German cockroaches, Indian meal moths, millipedes, mosquitoes, spiders, spider mites, stink bugs and more.

DESCRIPTION: Derived from botanical oils, this earth-friendly product will repel and kill a wide variety of insects in all sorts of locations. Formulated for maintenance control as well as active infestations. This water-based formula is made from food-grade inerts, has a light fragrance and is safe for use in food prep areas. For cannabis, hemp and unspecified food crop use. Safe around livestock. FIFRA 25(b) exempt.

SUGGESTED USE: Labeled for broadcast, barrier, perimeter, spot treatments and spatial repellent (mosquitoes). General application rate: 1-8 fl oz/gal water (lower rate for maintenance and higher rate for active infestations) and apply at the rate of 2 gals/1,000 sq ft. Do not apply directly to houseplants. Avoid or cover any pools or aquaria prior to spraying.

1273058	Essentria IC Pro – Quart	\$40.99
1273059	Essentria IC Pro – Gallon	\$129.99

Arbico Organics Natural Solutions Since 1979



M-Pede®

A Highly Effective, Organic Insecticidal Soap.

TARGET: Adelgids, aphids, caterpillars, lace bugs, leafhoppers, leafminers, mealybugs, mole crickets, plant bugs, psyllids, scales, spider mites, thrips, whiteflies, spongy moths & chinch bugs. Curative control for powdery mildew.

DESCRIPTION: This organic foliar spray insecticide/miticide/fungicide is made from potassium salts of naturally derived fatty acids (aka insecticidal soap) and can be used on a wide range of crops grown organically or conventionally in fields, greenhouses, or interiorscapes. M-Pede works in all life stages of mites, aphids and whiteflies. Other listed insect pests, the effects are limited to early growth stages and eggs. 12-hr REI & 0-day PHI.

SUGGESTED USE: This product may be applied with most types of ground or aerial spray equipment, but **DO NOT** use with pulse/thermal fogger applicators or apply through any type of irrigation or hydroponic system. M-Pede rates as low as 0.25% v/v or as high as 4% v/v may be used. **Do not** mix with sulfur or use within 3 days of a sulfur application. To avoid any possible plant injury do not make repeat applications at less than 7-day intervals, or make more than 3 sequential applications at 7- to 14-day intervals

1247650	M-Pede - 2.5 Gallons	\$153.00
1247652	M-Pede - 2.5 Gallons - Case of 2	\$275.40



LALGUARD M52 OD

A Broad-Spectrum Bioinsecticide That Delivers Comprehensive Control

TARGET: Whiteflies, thrips, mites, aphids and various other greenhouse pests.

DESCRIPTION: Formulated with spores derived from the fungus *Metarhizium brunneum* strain F52 (formerly known as *Metarhizium anisopliae*), this bioinsecticide promotes eradication of both foliar and soil pests while minimizing adverse effects on applicators, non-target organisms, and the environment. Upon application, the spores of the active ingredient will adhere to the targeted pest's bodies. These spores will then germinate, penetrate the insect's cuticle, colonize it and ultimately lead to the pest's termination within 3-7 days after application. It can be used with IPM strategies including beneficial insects, has no known resistance risks, is tolerance exempt, has a 0-day PHI, 0-day REI when soil incorporated, and a 4-hour REI when used as a drench, dip or foliar application.

SUGGESTED USE: For best results, apply at the early stages of pest development and adjust application frequency dependent on pests' life cycle and application environment. Persistence of the fungal spores will generally be higher when incorporated into soil and with foliar applications in greenhouses versus foliar applications outdoors. Repeat applications at 5-10 day intervals or 2-5 day intervals for high populations of whiteflies. Rates will vary, for most pests and environments use 40-80 fl. oz. / 100 gal as a drench or 8-64 fl. oz. (0.5 pt.-2 qt.) / acre for foliar applications. Apply using a hand-held, ground and/or aerial spray equipment. Contains emulsifiers and mixes readily with water.

1332997	8 oz.	\$62.00
1332998	34 oz.	\$215.00

Cannot be shipped to the following states: DC, HI, GU



Providing broad spectrum control of plant pests through multiple modes of action.

AzaSol™

This Non-Oil Based & Water Soluble Powder Controls A Myriad Of Insect Pests.

TARGET: Whiteflies, aphids, caterpillars, mushroom flies, phorid flies, leafminers, mealybugs, psyllids, weevils and many more.

DESCRIPTION: Through a patented process, the active ingredient in Azasol, Azadirachtin, is transformed into water-soluble amorphous powder that quickly dissolves in water and won't clog equipment or leave an oily residue or discoloration on plants. When used as directed it is effective on adult insects, larvae and pupae. It will vigorously repel insects, kill them when they come in contact with the spray or feed on sprayed plants and interrupt their life cycles. Won't burn leaves or block photosynthesis. Can be injected in trees for quick results.

SUGGESTED USE: Apply as a foliar spray or soil drench to soil or soilless media. A wetting agent may be used. To repel adult flies, use fogging equipment. Use from 1-4 tsp./1000 sq. ft. depending on pest infestation levels, application method and growing environment. For optimum results, 2-3 applications made at 7-10 day intervals is recommended.

1457620	AzaSol - .25 oz.	\$19.99
1457621	AzaSol - .75 oz.	\$46.99
1457622	AzaSol - 6 oz. (8 x 0.75 oz.)	\$329.99
1457624	AzaSol - 1 lb. Bottle	\$599.00
1457625	AzaSol - 2 lb. Jug	\$1,297.00



AzaGuard®

This OMRI Listed Product Works On A Wide Range Of Ornamental, Forestry, Food & Non-Food Crops.

TARGET: For controlling and repelling over 300 listed insect species, including aphids, beetles, armyworms, fungus gnats, leafhoppers, caterpillars, mealybugs, webworms, plant parasitic nematodes and root knot nematodes.

DESCRIPTION: Azadirachtin, extracted from the neem tree, is the active ingredient here. Insects are repelled by the taste and smell of neem, but azadirachtin also works as a molting/growth disruptor. This Insect Growth Regulator (IGR) disrupts the life cycle between larval, pupal and nymphal stages by impeding the metabolism of ecdysone. Ecdysone is necessary for molting, without which the insect cannot mature into its next growth stage and will, ultimately, die. NOP Compliant.

SUGGESTED USE: For Outdoor Use: apply about 8-21 fl. oz./acre. **For Indoor Use:** apply 8-16 fl. oz./100 gals. Apply using a power, pump or hand-held type sprayer. Spray when pests first appear and repeat at 5-7-day intervals utilizing a sticking agent if needed.

1222204	AzaGuard - 32 oz.	\$275.00
1222206	AzaGuard - Gallon	\$1,000.00
1222208	AzaGuard - 2.5 Gals	\$2,495.00



PyGanic® Gardening

Rapid Knockdown & Kill For Outdoor Pests In Your Garden.

TARGET: Over 100 listed pests, including aphids, beetles, caterpillars, crickets, fruit flies, fungus gnats, mites and thrips.

DESCRIPTION: This updated version of PyGanic offers the same ingredients and results as the former PyGanic 1.4. Pyrethrins, the active ingredient here, is made from a daisy extract and has been used effectively for a millennia. This formulation can be applied in a variety of ways, making it easy to use no matter the size of your garden. Spraying should begin when the insects first appear, not when they are already heavily infested. Thoroughly cover all plant surfaces. This OMRI listed, NOP compliant insecticide can be used throughout your growing season and up to the day of harvest.

SUGGESTED USE: For use on outdoor gardens and growing areas. Not for use indoors. Not for use on plants grown for sale. Do not exceed the maximum application rates of 1.4 fl. oz. per 1,000 sq. ft. or 59 fl. oz. per acre.

1288710	PyGanic Gardening - 8 oz.	\$29.98
1288720	PyGanic Gardening - 32 oz.	\$67.98
1288730	PyGanic Gardening - Gallon	\$245.99





WHAT ARE FLY ELIMINATORS?

The Sensible Alternative To Pesticides

Fly Eliminators are tiny ≈1/8" beneficial insects that parasitize flies in their developing pupal (cocoon) stage, before they can hatch into annoying disease-carrying adult flies. Scientifically they are referred to as Fly Parasites or Fly Parasitoids.

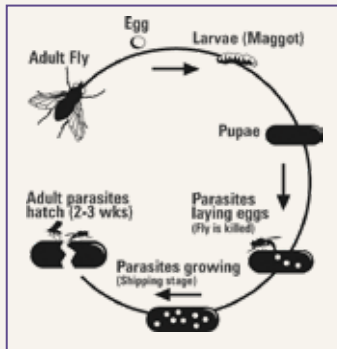


Adult Fly Eliminator emerging from fly pupa.

Fly Eliminators will only parasitize fly pupae and will not bother horses, cattle, livestock, pets, plants, or you.

HOW DO FLY ELIMINATORS WORK?

Adult female flies lay their eggs in decaying organic matter, especially manure. Only a few hours later, these eggs develop into microscopic larvae (maggot stage) and burrow down into the manure. The maggots grow until they form a pupa (cocoon stage).



Life cycle of the fly parasite.

Then, the female Fly Eliminators seek out the fly pupae and begin to deposit their eggs inside. The eggs grow into larvae that feed on the developing fly, stopping the adult pest fly from hatching.

Fly Eliminators reproduce in about 21 days, constantly strengthening the Fly Eliminator population. Pest flies reproduce at a faster rate than our Fly Eliminators, so we recommend they be replenished on a regular basis, approximately every 2-4 weeks.



I was introduced to Fly Eliminators 30 years ago at a Racetrack Symposium and have been using them ever since. They've done a fabulous job and I have recommended Fly Eliminators to many people! They're a great product! Their Fly Eliminators Program was green before green was popular. Without a doubt, this is the way to go. ARBICO Organics is a very good company!



– Roy Smith, Former Track Manager of Philadelphia Park

WHO USES FLY ELIMINATORS?

Our customers are all types of horse owners, from the single horse owner to large breeder, including racetracks and farms with many types of animals.

- Boarding Facilities
- Dairy Facilities
- Stables
- Aquariums
- Feed Lots
- Race Tracks
- Poultry
- Kennels
- Equestrian Hobbyists
- Urban Farmers
- Zoos
- Plus more

Please be sure to account for all of your livestock and other animals. Call for special reduced pricing for large facilities, mixed livestock areas and/or custom programs.



HOW DO I USE FLY ELIMINATORS?

Your Fly Eliminators will arrive in a clear plastic bag which contains parasitized fly pupae in wood shavings.

1. When your Fly Eliminators arrive, check for any signs of hatching.
2. Store in a warm, dry place. Once the Fly Eliminators begin to hatch simply disperse them near breeding sites: manure piles; under water troughs; under bedding; corners of pens and feeding sites.
3. Cover with dirt or manure to protect your Fly Eliminators. They will then start to burrow down and search for fly pupae to lay their eggs in.
4. Repeat every 2-4 weeks.



Fly Eliminators and wood shavings in packaging.

Use Your Fly Eliminators the RIGHT Way:

RIGHT Time

- ☑ Start your Fly Eliminators Program before or as soon as your infestation starts
- ☑ Release once you have 3 nights in a row of 40°F temperatures
- ☑ If you start late, just add more Fly Eliminators to your order

RIGHT Place

- ☑ Release at the end of the day – they're nocturnal
- ☑ Release near manure, urine soaked areas, feeding, watering & bedding areas

RIGHT Amount

- ☑ The more Fly Eliminators, the fewer the flies

RIGHT Schedule

- ☑ Shipments every 2-4 weeks are best to break the fly lifecycle



We started using Fly Eliminators back in 1983. We are still using them today. It's a wonderful product and a successful program that everyone should use! All the big corporations are going green and we were one of the first to go green by using Fly Eliminators.



– Butch Lehr, Former Track Manager of Churchill Downs

The Del Mar Thoroughbred Club horse racing facility has been using Fly Eliminators from ARBICO since 1985 with great success. Each summer nearly 2,000 horses and hundreds of thousands of race goers converge on this community making fly control a top priority for both the Del Mar Thoroughbred Club and the community that relies so heavily on the agricultural product we promote. We appreciate the years of timely and professional service ARBICO Organics has provided and look forward to many more good years ahead.



– Joe Harper, Chief Executive Officer of Del Mar



VALUE PRICING

HOW TO ORDER:
Call 1-800-827-2847 or visit www.arbico-organics.com

Only \$25.00 Per Shipment for 2-5 Horses USPS Shipping Included* in Prices!

Number of Horses/Animals	Suggested Units*	Price Per Shipment
1	1/4 Unit	\$19.99
2 - 5	1/2 Unit	\$25.00
6 - 10	1 Unit	\$37.80
11 - 15	1 1/2 Units	\$48.95
16 - 20	2 Units	\$61.00
21 - 25	2 1/2 Units	\$73.60
26 - 30	3 Units	\$82.69
31 - 35	3 1/2 Units	\$93.95
36 - 40	4 Units	\$102.95
41 - 45	4 1/2 Units	\$113.50
46 - 50	5 Units	\$119.50
51 +	Please Call 1-800-827-2847	

Order Your Fly Control Program Today!

Please be sure to account for all of your livestock and other animals. Call for special reduced pricing for large facilities, mixed livestock areas and/or custom programs.

*USPS shipping included up to 5 units.

*These are units of measurement, not warranties or guarantees of performance. The total seasonal cost of Fly Eliminators depends on the recommended number of shipments which may be different than what competitors may recommend. We recommend releasing a shipment every 2-4 weeks throughout the fly season, but releases ranging from 1-6 weeks are not uncommon. Customer experiences may vary. The quantity required and frequency of application can differ according to region, size and condition of property or stables, severity of fly problem, neighbors, manure management, number of animals and start date of program. All warranties, express or implied are disclaimed. One unit bag shown. © 2026 Arizona Biological Control, Inc.

Controlling pests around animals and livestock may reduce nuisance and prevent costly diseases.

The Amazing Doctor Zymes Poultry Guard

Stop Stressful Poultry Pests & Have Happier, Healthier Birds!

TARGET: Prevents and eliminates mites, ticks, fleas and other harmful insects that commonly affect poultry.

DESCRIPTION: Made from citric acid and enzymes that breakdown proteins and organic matter, this spray will disrupt a pest's ability to breath, eliminating and repelling them! This product will help to relieve pest stressors, enhancing your flock's health and product quality. It is biodegradable, leaves no residues, helps eliminate odors and can be applied at all life stages and up until the harvest!

SUGGESTED USE: Can be applied as a spray to coops, infected areas, floors, walls, ceilings and in cracks and crevices or directly to birds as a dip or spray according to directions. It can also be applied in a mister for commercial farms. For preventative control as a spray, apply weekly. For preventative control utilizing other application methods, apply monthly. Always mix with warm at a temperature between 70-90°F. For control of poultry mites/lice – Mix at a ratio of 1 oz./31 oz. water or 4 oz./124 oz. of water. For control of fleas/beetles – Mix at a ratio of 8 oz./1 gallon of water. To clean bedding area or cages – Mix at a ratio of 4-8 oz./1 gallon of water. Remove all bedding and litter and spray entire area including cracks and crevices and replace bedding if severally infested.



1459210	Poultry Guard - Quart Conc.	\$37.26
1459211	Poultry Guard - Gallon Conc.	\$134.40
1459212	Poultry Guard - 2.5 Gallon Conc.	\$323.64
1459213	Poultry Guard - 5 Gallon Conc.	\$613.87

PyGanic® Specialty

Livestock & Poultry Control of Lice, Mites And Beetles.

TARGET: Livestock and poultry pests as well as over 100 listed plant pests.

DESCRIPTION: PyGanic Specialty is an OMRI listed insecticide suitable for treating poultry and their surrounding locations. Made from botanical ingredients, it effectively controls poultry pests while ensuring the safety of the birds. PyGanic Specialty offers reliable protection against common poultry pests, promoting a healthier environment.

SUGGESTED USE: For use on production animals in barns, dairies, milking parlors, milking rooms and poultry houses. For use on horse flies, house flies, mosquitoes and gnats, dilute at the rate of 1.5-3 fl. oz. per 1 gallon of water and apply. Please see label for more detailed instructions on other livestock and crop pests.



1288770	PyGanic Specialty - 32 oz.	\$187.99
1288780	PyGanic Specialty - Gallon	\$709.99

balEnce™ Fly Spray

An Easy-To-Use Beneficial Insecticidal Spray To Fight Flies!

TARGET: Larval and adult flies.

DESCRIPTION: This EPA approved biological insecticide is suitable for organic programs. Consists of a liquid suspension of beneficial entomopathogenic fungi known as *Beauveria bassiana*. The fungus acts as a parasite on flies, causing white muscardine disease. When the microscopic spores of the fungus come in contact with the body of an adult or larval stage of a fly, they germinate, penetrate the cuticle and grow inside, killing the fly within a matter of days. Soon after, a white mold emerges from the cadaver and produces new spores that continue to infect more flies. After application, adult flies and fly larvae die in 24 to 72 hours. Product will continue to remain viable on residual surface areas for up to about 21 days.

SUGGESTED USE: Apply to animal rearing sites, housing and holding areas and manure piles. The 15 oz. container treats up to about 50,000 sq. ft. Apply using a backpack sprayer or fogging equipment. Use no more than 60 oz. per building/area per week. For best results, turn fans off or to lowest level in order to ensure maximum surface area coverage. Can be used in colder months to help curtail impending spring fly blooms. Check for evidence of reduced populations of fly pupae in manure and other breeding areas following application 21 to 35 days or up to 90 days in cooler temperatures.



1272100	balEnce Fly Spray - 15 oz. Bottle	\$150.00
---------	-----------------------------------	----------



Fly traps are integral in a fly control program. They help break the lifecycle by trapping and killing adult flies.

ARBICO Organics® Solar Fly Trap

Heavy Duty, Reusable, Portable & Lightweight Fly Trap!



TARGET: Adult flies.

DESCRIPTION: This built-to-last, rust-free, heavy duty trap goes anywhere to reduce existing fly populations, fly blooms and migrant flies. Used by gardeners, pet owners, kennels, horse owners, breeding and training facilities, dairies, poultry and swine facilities, feedlots and other places where flies are a problem. Dimensions: 12" diameter x 10.5" tall.

SUGGESTED USE: Mix the yeast bait with water and pour into container at the bottom of the trap. Within seconds flies are lured into the trap. They enter into the confinement chamber and dehydrate from exposure to the sun. When it begins to fill up with flies, just empty, hose out and reset with new bait. Comes with one packet of bait, which is enough for approx. 5 weeks. Use 1 trap for 5-10 horses.



1256001	ARBICO Organics Solar Fly Trap - Includes 1 Bait	\$108.00
1256005	ARBICO Organics Solar Fly Trap - Includes 4 Baits	\$120.00
1256002	Replacement Fly Bait	\$9.99
1259990	ARBICO Organics Solar Fly Trap - 2 Pack	\$194.00
1259991	ARBICO Organics Solar Fly Trap - 3 Pack	\$285.00
1259992	ARBICO Organics Solar Fly Trap - 4 Pack	\$360.00

Replacement parts available online.

*FREE SHIPPING via ground or US Mail ONLY.

FLY TRAPS



Biting Fly Trap

1256020	Biting Fly Trap - Pack of 1	\$19.99
1256021	Biting Fly Trap - Pack of 3	\$53.97
1256022	Biting Fly Trap - Pack of 5	\$84.95

Replacement sleeves available online.



Captivator® & Fly Terminator® Pro Fly Traps

1256051	Captivator Fly Trap	\$14.99
1256052	Terminator Pro Fly Trap	\$31.99
1256053	Starbar Fly Trap Attractant Refill - 8 ct.	\$13.99

Bite Free™ Stable Fly Trap

1256050	Bite Free Stable Fly Trap	\$19.29
---------	---------------------------	---------



Milk Jugg™ Trap - 2 Pack

1256054	Milk Jugg Trap - 2 Pack	\$18.49
---------	-------------------------	---------

Sticky Fly Ribbon

1280630	Sticky Fly Ribbon KIT (Hardware & Ribbon)	\$64.80
1280631	Sticky Fly Ribbon On A Roll - 1,000 ft	\$32.00
1280632	Hardware for Sticky Fly Ribbon	\$40.00

FLY CONTROL

For use on or around animals, fly sprays can provide relief and comfort for both humans, horses and more.

BugPellent® Cylinder

All The Fly Control For Little Expense & None Of The Chemicals.

TARGET: Black flies, deer flies, gnats, horse flies, house flies, mosquitoes, stable flies and ticks.

DESCRIPTION: This ingenious insect repellent uses the vapors of 9 essential oils to create a repellent barrier that will keep a broad range of insects away from your animals. Simply hang where it's most needed and the pleasant-smelling oil vapors will accumulate under the ceiling and float down to protect the animals. Lasts 4-8 weeks, depending on temperature and airflow; refills available.

SUGGESTED USE: Do not combine with insect attractant products. Use in barns, stalls, garages or any enclosed or semi-enclosed structure where the vapors can accumulate. Don't use with fans, the strong airflow they create will prevent the necessary vapor build-up. Use a minimum of 2 cylinders per structure or use 1 cylinder for approximately every 4,000 cu. ft. of indoor space, or 1 cylinder for every 1½ stalls. Hang between 7-12' high at least 6' from a door and 3' from a window. Allow for adequate airflow around the cylinder. Can be placed in entryways at least 6' inside building.



1256040	BugPellent Cylinder	\$19.99
1256041	Refills - 2 Pack	\$22.29

Equiderma Horse Spray

This Powerful Spray Has A Light Citrusy Scent.

TARGET: All flies, mosquitoes and gnats. Will also inhibit ticks.

DESCRIPTION: This unique combination of botanical oils, neem and aloe will repel biting and blood-sucking insects, control future insect populations and protect your animal's skin from fungal and bacterial skin diseases. The oils are a powerful repellent; the neem oil has antibacterial, antiviral, anti-inflammatory and antifungal properties and also disrupts the insect life cycles, while the aloe helps protect the skin and keep the coat nice and shiny. DEET, Pyrethrin and Permethrin free and can be used on horses, ponies, foals, dogs, pigs, cows, llamas, alpacas and chickens.

SUGGESTED USE: For external use only. Dial spray down to its lightest spray; this spray is powerful. Apply sparingly with first application to test your horse's sensitivity to the essential oils contained. Heavy coverage may result in hives. However, this result is rare. If hives appear, cold hose the area thoroughly and re-apply using a lighter spray. If reaction continues, discontinue use.



1107500	Equiderma Horse Spray - 32 oz. RTU	\$28.49
1107501	Equiderma Horse Spray - Gallon RTU	\$99.99

MOSQUITO CONTROL

Bacillus thuringiensis israelensis is an effective larvicide that can be used in almost any standing water.

Mosquito Bits®

Harness The Power Of Bti For A Clean, Quick Kill.

TARGET: Mosquito and fungus gnat larvae.

DESCRIPTION: Mosquito Bits uses the biological larvicide *Bacillus thuringiensis v. israelensis* (Bti) to quickly kill mosquito larvae in a wide range of habitats. When spread uniformly over the surface of water, the Bti will float down into the water where the larvae will consume it and die; usually within 24 hours. Bits are not harmful to people, animals or plants. Repeat after a 7-10 day interval. For Fungus Gnat control: Spread the granules over the soil until the area is covered. Moisture in the soil will dissolve the Bits. Re-apply every 3 weeks.

SUGGESTED USE: Sprinkle 1 teaspoon per 25 sq. ft. or 1 tablespoon per 75 sq. ft. (1/2 lb. per 2,178 sq. ft.) over the surface of containerized standing water. This includes bird baths, water troughs, unused swimming pools, old automobile tires, water gardens, rain barrels and more. DO NOT APPLY to finished human drinking water sources.

1211108	Mosquito Bits - 8 oz.	\$10.95
1211136	Mosquito Bits - 30 oz.	\$17.80
1211130	Mosquito Bits - 20 lbs.	\$119.00
1211139	Mosquito Bits & Dunks Combo Kit	\$24.90



AQUABAC® 200G Granular Bti Mosquito Control



Use This Bti Larvicide Wherever You Have Mosquitoes Breeding.

TARGET: Larval stages of mosquitoes, fungus gnats and black flies.

DESCRIPTION: AQUABAC 200G contains *Bacillus thuringiensis var. israelensis* (Bti), a bacteria that specifically targets mosquitoes and black flies in their larval stage, but is harmless to other living things. Once ingested, Bti will work quickly to damage cells and paralyze the larva. In addition, since AQUABAC 200G does not affect larva predators, they will continue their work alongside the Bti.

SUGGESTED USE: Can be applied to almost any habitat that supports mosquito or black fly larvae. Do not use directly in water sources for human consumption. Broadcast by hand or hand spreader in small areas or by standard ground or aerial dispersing methods for larger areas. If water is clear, broadcast at 2.4-10 lbs. per acre. If water is brackish, murky, polluted or full of algae, broadcast 10-12 lbs. per acre. Lasts for approximately 2 weeks.

1211150	AQUABAC Granular Bti - 40 lb. - Free Shipping*	\$195.00
---------	---	----------

*Free Shipping on 40 lb. bag only, in the contiguous 48 states.

Ships via Ground ONLY. Call for pallet pricing.



AQUABAC® Xt

Use This Powerful Biocontrol Liquid To Kill Mosquito Larvae In Water.



TARGET: Larval stages of mosquitoes, fungus gnats, aquatic midges and nuisance flies.

DESCRIPTION: This *Bacillus thuringiensis var. israelensis* (Bti) offers the same powerful pest control in a convenient liquid form. Bti is a bacteria that expressly targets mosquitoes, fungus gnats, aquatic midges and nuisance flies in their larval stages. Once ingested, it will work rapidly to damage cells and fatally paralyze the larva. AQUABAC Xt will not harm any other form of aquatic life or beneficial insects.

SUGGESTED USE: This product can be applied via conventional aerial and ground application equipment (or metered release system) in nearly any habitat that supports the targeted pest larvae. For mosquitoes, use between .25-2.0 pts./100 gals. Higher rates apply when water is polluted, adult populations are high or there is a lot of algae. Do not apply this product in any type of irrigation system or in any sources of water that are for direct human consumption. More specific application rates can be found on the package label.

1211160	AQUABAC Xt - 2.5 Gallons*	\$247.00
1211161	AQUABAC Xt - 2.5 Gallons/Case of 2*	\$419.90

*Free Shipping in the contiguous 48 states. Ships via ground ONLY. Call for pallet pricing.



FLY REPELLENT SPRAYS

Ecovet™ Fly Repellent

A Vet-Created Fly Repellent That Will Improve Insect-Related Skin Sensitivity.

1107500	Equiderma Horse Spray - 32 oz. RTU	\$28.49
1107501	Equiderma Horse Spray - Gallon RTU	\$99.99

Horse Fly TweetMint

Keeps Biting Insects Away & Leaves Everything Smelling Minty-Fresh.

1202640	Horse Fly TweetMint - 16 oz.	\$35.00
1202641	Horse Fly TweetMint - 32 oz.	\$50.00
1202642	Horse Fly TweetMint - 64 oz.	\$87.50
1202643	Horse Fly TweetMint - Gallon	\$150.00

EcoSmart® Horse Fly Spray

Give Your Horse Fast-Acting Relief From Flying Insect Pests.

1107520	Horse Fly Spray - 24 oz. RTU	\$13.99
---------	------------------------------	---------

BugPellent® Fly & Tick Spray

Controls The Worst Household & Barnyard Pests Without Poison.

1256044	32 oz. RTU w/attached conc refill	\$21.59
---------	-----------------------------------	---------



Bti controls only mosquito and fungus gnat larvae in troughs, rain barrels, ponds and more.

Mosquito Barrier®

For Yards, Parks & Grass Areas – Keeps Mosquitoes Away!

TARGET: Mosquitoes, gnats and fleas.

DESCRIPTION: Liquid garlic repellent dissipates within minutes of application. Kills adults on contact and suffocates larvae in standing water within approximately 24 hours. Saturate all plants including grass, vegetables and trees. Applications last up to 4 weeks.

SUGGESTED USE: Residential (1/2 acre): 4 oz. Mosquito Barrier & 2 gallons of water. **Medium Areas** (1.25 acres): 1 quart Mosquito Barrier & 20 gal. of water. **Large Areas** (5 acres): 1 gallon Mosquito Barrier & 98 gallons of water.

1211001	Mosquito Barrier - Quart	\$24.99
1211002	Mosquito Barrier - Gallon	\$87.99

This product cannot be shipped to the following states: ID, KS, WY



TERRO® No Mess Mosquito Larvicide Pouches

Dissolvable Pouches Make Protecting Your Family from Mosquitoes Easier than Ever!

TARGET: Mosquito Larvae

DESCRIPTION: These convenient and dissolvable pouches contain a selective microbial insecticide (*Bacillus sphaericus* and *Bacillus thuringiensis*) that targets and kills mosquito larvae for up to 4 weeks! Pouches can be used in areas of standing water such as fishponds, bird baths, gutters, rain barrels, and more and can be used around people, pets, plants, aquatic life, wildlife and livestock (when used as directed).

SUGGESTED USE: One pouch treats 50 sq. ft. of

water surface area. Place pouch directly on the water surface, do not need to tear it open. Reapply pouches every 2 months for continuous protection. Keep any unused pouches in original resealable container.

1211258	TERRO Pouches - 10 pk.	\$13.99
----------------	------------------------	----------------



Outdoor Pest Control

An Essential Oil-Based Product That Offers 3-in-1 Mosquito Control.

TARGET: Mosquitoes, fleas and fire ants.

DESCRIPTION: Outdoor Pest Control is a liquid, highly concentrated product that suffocates larvae in the standing water where they breed, kills 100% of mosquitoes within 24 hours in a single treatment. Made with a combination of citronella, cedar, lemongrass, garlic, geraniol and rosemary oils, Outdoor Pest Control sprays in a very fine mist for maximum coverage and control. O has been tested and proven to kill 100% of mosquitoes in 24 hours and also have a 100% kill rate on fire ants and fleas.

• You can buy some concentrate and use your own sprayer or choose from one of the Mosquito Magician Yard Sprayer Combos listed below.

SUGGESTED USE: 1 pint concentrate treats up to 16,000 sq. ft.; 1 quart concentrate treats up to 32,000 sq. ft.; 1 gallon concentrate treats up to 128,000 sq. ft. and 1 gallon RTU treats up to 4,000 sq. ft.

1211140	Outdoor Pest Control- 16 oz. Concentrate	\$27.49
1211141	Outdoor Pest Control - 32 oz. Concentrate	\$41.99
1211142	Outdoor Pest Control - Gallon Concentrate	\$109.95

Outdoor Pest Control Yard Sprayer Combos

1211138	Battery Sprayer & 2 Gallons RTU	\$84.99
1211146	Hose End Sprayer & 1 Gallon Concentrate	\$125.95
1211148	Pump Up Sprayer & 1 Gallon Concentrate	\$157.45



Natular® DT

These Easy-to-Use Fizzy Tablets Kill Mosquito Larvae For 60 days!

TARGET: Use to kill the larvae of container breeding mosquitoes, e.g., *Aedes aegypti* and *Aedes albopictus*.

DESCRIPTION: Use this Spinosad-based product to kill mosquito larvae in standing water. These small bi-layer tablets use a dual-release action to ensure a quick kill and continuous control. The first layer is effervescent and will bubble up, dissolve and spread within 60 seconds and begin killing larvae within 24 hours. The second layer dissolves more slowly over the next 60 days. Can be applied to sites that contain fish and plants. Poses no threat to honeybees and other beneficials. Tablets may be cut in half for use in smaller areas.

SUGGESTED USE: Use 1 tablet to treat up to 50 gallons (192 liters) or 25 sq. ft. For continuous action, keep tablet immersed in water. Can be allowed to dry and rewet for use in sites that intermittently fill with water. Reapply after 60 days. Can be applied as a preventative action (pre-flood treatment) before sites fill with water.

1211250	Natular DT - 60 day tablets - 12 ct. Package	\$12.99
----------------	--	----------------

Cannot be shipped to the following states: ME



Protecting trees from the ground up includes traps, biopesticides and protective barriers.

Tree Tanglefoot® Insect Barrier

This Versatile Product Offers Poison-Free Protection From Insect Pests All Season Long.

DESCRIPTION: Tree Tanglefoot Insect Barrier is a super-sticky, non-toxic barrier that stops and kills crawling insects that are out to prey on your trees. This non-drying, oil-based compound works all season long to control insects like canker-worms, spongy moth larvae, vine weevils and more.

SUGGESTED USE: Apply on top of Tanglefoot TangleGuard Banding Material (or another similar product). This product will retain its stickiness and efficacy until it is covered with insects, dust or other debris. Monitor to determine when removal or reapplication is necessary. Use a heavy coating (approximately 3" wide x 3/32" thick) when targeted insects are large or numerous. Use a light coating (3" wide x 1/16" thick) as a general barrier when targeted insects are small or fewer in number. Do not apply directly to young, thin-barked trees or to bearing fruit or nut trees.

1266030	15 oz tub	\$13.89
1266040	Kit (15 oz Insect Barrier & 50' Banding)	\$19.90
1266031	80 oz. tub	\$43.39



Monterey Fruit Tree Spray Plus

OMRI Listed Spray Combining Pyrethrins & Neem Oil Used As Insecticide, Fungicide & Miticide.

TARGET: Powdery mildew, downy mildew, rusts and leaf spot; aphids, spider mites, whiteflies, loopers, leafminers and more.

DESCRIPTION: Monterey Fruit Tree Spray Plus is a natural control spray for many common pest insects and plant diseases, such as powdery mildew, downy mildew, rusts and leaf spots. A mixture of pyrethrins and 70% Neem Oil ensures that Monterey Fruit Tree Spray Plus is fast-acting when sprayed on your plants up until the day of harvest.

SUGGESTED USE: Concentrate: Mix 2 tablespoons of Monterey Fruit Tree Spray Plus per gallon of water and thoroughly apply to all leaf surfaces including the undersides of the leaves. **RTS:** Attach to a hose with water access and follow spraying directions on the label.

1257931	Fruit Tree Spray Plus - Pint Hose-End RTS	\$40.49
1257930	Fruit Tree Spray Plus - Pint Concentrate	\$37.99
1257932	Fruit Tree Spray Plus - Quart Concentrate	\$60.99

Cannot be shipped to the following states: AK, ND, NE, WY



IV Organic® 3-In-1 Plant Guard™

An Organic Pest Control Solution For Your Trees – Easy As 1-2-3

DESCRIPTION: This easy-to-use coating offers an eco-friendly solution to combat sun and rodent damage on trees, shrubs and roses. It's made with Neem oil, which deters insects by repelling, coating and smothering them. This product also contains Castor oil, which most small animals find repugnant. Sunburn and sunscald can cause great stress to plants and can lead to death. This highly reflective paint will keep a good portion of the sun's damaging rays out. Requires only one application per year, as a brush-on or in an RTU spray.

SUGGESTED USE: Brush-on: 1 can contents should cover about 12 young tree trunks (3 gal. size) with a single coat. Fill can with powder and oil vial from can, fill with water and stir. Spray-on: Spray ahead of any expected heatwaves. Coat all exposed leaves, branches and trunk. Some trees may require more than 1 coat.

READY TO SPRAY:

1240150	3-in-1 Plant Guard - 23 oz. Spray-On	\$24.95
----------------	--------------------------------------	----------------

BRUSH ON:

1240100	3-in-1 Plant Guard - Pint White	\$34.95
1240101	3-in-1 Plant Guard - Pint Brown	\$34.95

Gallon and case sizes available for the brush-on version.



Including organics compost, minerals and amendments helps support all stages of plant growth.

ARBICO Organics® Compost Plus

Revitalizes Soil & Speeds Up Decomposition Of Organic Matter.

DESCRIPTION: This premium compost is product of our insectary and is a blend of fermented nitrogenous and carbonaceous material along with beneficial bacteria, insect frass and wood shavings. Use compost as a mulch and soil amendment to improve soil structure, texture, aeration, water-holding capacity and to provide additional nutrition for microorganisms.

SUGGESTED USE: For potted plants, use 3-10 tsp. per pot. Otherwise, mix 1 lb./12 sq. ft. of soil. 2 cu. ft. of compost will treat 50 sq. ft. For farms, 2-4 tons will treat 1 acre.

1305601	Compost Plus - 1 lb. Bag	\$8.90
1305602	Compost Plus - 5 lb. Bag	\$11.50
1305610	Compost Plus - 1 Cubic ft. Bag	\$17.00
1305603	Compost Plus - (2) 1 Cubic ft. Bags	\$28.00
1305607*	Compost Plus - 1/2 Ton Pickup Truck Load	CALL

*Call to arrange pickup. Pickup in Catalina, AZ.

ARBICO Organics® Earthworm Castings

So Good For Your Garden It's Almost Magical!

DESCRIPTION: A sustainable byproduct of vermiculture, these castings have a bounty of benefits for your soil. They provide a slow release of micronutrients and trace minerals, add microbial life, reduce transplant shock, aerate and condition the soil and add chitinase (which helps in disease suppression and root knot nematode control). Can be used indoors and outdoors on anything you grow and can be used with other fertilizers and amendments.

SUGGESTED USE: Mix into potting soil at the rate of 3%-5% by volume. Top-dress around pots beds, shrubs, trees or rows at a rate of 1/4" - 1/2" every 2-4 mos. Incorporate into the top several inches of pots or beds prior to planting or mulching. Repeat when transplanting to reduce shock. Apply onto turf and rake in for lush, green grass.

1308200	Earthworm Castings - 1 lb. Bag	\$4.95
1308201	Earthworm Castings - 5 lb. Bag	\$15.20
1308202	Earthworm Castings - 10 lb. Bag	\$25.00
1308225	Earthworm Castings - 25 lb. Bag	\$47.95

ARBICO Organics® Red Composting Worm Mix - *Eisenia fetida, Eisenia hortensis, Perionyx excavatus*

A Natural Way To Aerate Your Soil & Fertilize Your Garden.

DESCRIPTION: These worms are nature's decomposers and soil aerators. They consume organic matter and turn it into castings full of nitrogen, phosphorus, potash, magnesium and calcium. As they move through the soil, they break it up and introduce beneficial bacteria and oxygen. This stimulates fungal activity and more rapid breakdown of organic matter. Plants love soil that these worms have been in!

SUGGESTED USE: Use 2-3 worms/sq. ft. 1,000 worms cover approximately 400 sq. ft.

1308003	ARBICO Organics Earthworms (≈1,000)	\$45.00
---------	-------------------------------------	---------

Cannot be shipped to the following states: HI, PR, VI, GU, AS, PW

Subject to seasonal availability.

These bacteria and fungi defend against soil pathogens and help unlock soil nutrients.

ARBICO Organics® Root Build 240™ Mycorrhizal Fungi

This Potent Mycorrhizal Fungi Has An Incredible 240 Spores/gr To Maximize Root Colonization.

DESCRIPTION: Root Build 240 contains both micronized Endo and Ecto mycorrhizae for a wide range of plant applications. This greater diversity in beneficial fungi meets the needs of a greater variety of plants. When introduced early in the life of a plant, the endo and ecto will increase the roots' ability to absorb water and nutrients. Endomycorrhizae work within and around the roots of most vegetables, grasses, flowers and ornamentals while ectomycorrhizae live only on the outside of roots and focus on conifers. The high spore count in Root Build 240 means there will be maximum colonization of your plants' roots. Endo Spores: 240 spores/gr. Ecto Spores: 1 x 10⁶ spores/gr.

SUGGESTED USE: Inoculate roots with mycorrhizal spores (1 oz. is ≈3 Tbsp.) For vegetables, grasses, flowers, shrubs, fruit trees and ornamentals.

1135001	ARBICO Organics Root Build 240 - 1 oz.	\$9.00
1135002	ARBICO Organics Root Build 240 - 2 oz.	\$12.50
1135003	ARBICO Organics Root Build 240 - 8 oz.	\$30.00
1135004	ARBICO Organics Root Build 240 - 1 lb.	\$60.00
1135005	ARBICO Organics Root Build 240 - 10 lbs.	\$350.00

*Free shipping in the contiguous 48 United States via USPS mail.

Mikro-Myco

A Heady Combination Of Mycorrhizae, Rhizobacteria & Beneficial Fungi.

DESCRIPTION: Mikro-Myco contains a combination of endo and ectomycorrhizae, phosphate solubilizing fungi (PSF) and plant growth promoting bacteria (PGPB). Together, the mycorrhizae and supplemental microbes work to develop the ultimate interchange between roots, soil, and plants. It will encourage root growth, but also provide fungal hyphae in the root zone to help move nutrients up into the soil. The beneficial fungi in this blend are able to release fixed phosphorus and provide support for the plant to fight off pathogens and overcome stressors, allowing the plant to put its energy into maximizing growth and fruit/flower output.

SUGGESTED USE: Water Suspension: 1 tsp/1 gal distilled or tap water and drench the root area. Dry Application: 1 tsp-1 Tbsp. to root system while planting/transplanting. Powder must come in direct contact with the roots.

1202510	Mikro-Myco - 2 oz. Pouch	\$12.49
1202511	Mikro-Myco - 4 oz. Pouch	\$19.99
1202512	Mikro-Myco - 5 lb. Pail	\$259.00
1202513	Mikro-Myco - 30 lb. Pail	\$1,249.00

Cannot be shipped to the following states: AL, CA, CO, ID, IA, KS, LA, ME, MD, MN, MO, NE, ND, OH, OR, SC, SD, WY

Plant Success Organics Granular™ 3-1-2

Harness the Power of Beneficial Microbes.

DESCRIPTION: Want to ensure your transplants not only survive but thrive? With Plant Success Organics Granular 3-1-2 formula, you can give your plants a powerful blend of mycorrhizal fungi and beneficial microbes to supercharge root growth, improve nutrient uptake, and enhance water absorption. This OMRI-listed inoculant gives your plants a jumpstart by building the soil life around the roots. The bacteria and fungi work symbiotically with your plants to boost yields, reduce transplant shock, and cultivate stronger, healthier roots the natural way.

SUGGESTED USE: Plant Success Organics Granular can be used in a wide range of soils, climates, and plants. Sprinkle the listed amount in the hole of a new planting or transplant closely to the roots. Mix with potting soil at a rate of 4-8 oz. per 2.5 cu.ft. of soil.

2000070	1 oz.	\$4.39
2000068	4 oz.	\$8.99
2000069	1 lb.	\$17.99

MICROBIAL INOCULANTS

These bacteria and fungi build a defense against soil pathogens as well as unlocking soil nutrients.



EM•1® Microbial Inoculant

Faster Breakdown Of Organic Matter.



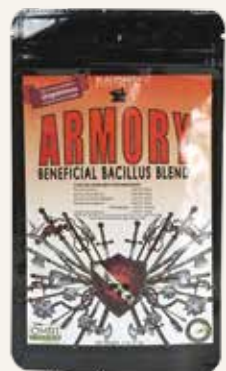
DESCRIPTION: EM-1 is a versatile microbial product that converts organic matter into humus and improves soil structure; it can be used in garden, agricultural, hydroponic and houseplant applications. It works by producing high levels of polysaccharides, beneficial enzymes and organic acids. The resultant amended soil is better able to absorb and retain moisture, as well as cycle nutrients. As it rapidly breaks down organic matter around animals and in compost piles, it lessens odors and will leave fewer breeding areas for flies and other insects.

SUGGESTED USE: Can be applied via a hose-end sprayer or other watering device. General application rate is 1 oz (2 Tbsp.) per gal/water. Hydroponics: Add EM-1 as a 3% solution several times a week.

1202098	EM•1 Microbial Inoculant - 16 oz.	\$29.70
1202101	EM•1 Microbial Inoculant - Quart	\$45.00
1202102	EM•1 Microbial Inoculant - Gallon	\$79.70
1202103	EM•1 Microbial Inoculant - 5 Gallons	\$398.50

Call for larger sizes.

Cannot be shipped to the following states: HI, PR, VI



Armory® SP

A Blend Of Beneficial Bacteria That Provides Multiple Plant Promoting Benefits.



DESCRIPTION: Each of the four *Bacillus* and *Streptomyces* species in this 100% water soluble organic powder bring their own assets to the table, and in combination with the others they work synergistically to achieve maximum performance in promoting plant health. Also provides a steady food source for the microbes so they can continue to flourish in your soil (or soilless media) throughout the life of your plants. Solubilizes phosphorus and makes iron and manganese more available. Breaks down cellulose and lignin and enhances nutrient cycling. Leaves no residue and is not phytotoxic. Compatible with fungicides, insecticides, fertilizers and biological stimulants **but avoid mixing with** copper sulfate pentahydrate, sulfur and hydrogen peroxide type products.

SUGGESTED USE: Residential Use or Reservoir Application: 0.25-1 tsp/gal water. Greenhouse/Nursery: 1-8 oz/100 gals water. Soil Incorporation: 1-2 oz/cu yd soil/media. Outdoor Soil or Foliar: 1-6 oz/acre. In-furrow: 0.5-6 oz/acre. Hydroponics: 1-6 oz/100 gals tank water. Bed, Field or Row Prep: 1-4 oz/acre. Post Fumigation Soil Application: 4-16 oz/acre through irrigation directly to the area fumigated.

1202165	Armory SP - 2 oz.	\$34.99
1202166	Armory SP - 1 lb.	\$165.45

Mikrobs

Self-Propagating Microbes & Supplemental Nutrition.



DESCRIPTION: This finely powdered, organic soil amendment contains three powerful microbes (Rhizobacteria, Trichoderma fungi and Mycorrhizal fungi) as well as supplemental nutrients. These work synergistically together to maximize their effect and the nutrients (humic/fulvic acid, amino acid, kelp, molasses) provide ongoing nutritional support for the microbes as they stimulate root growth and work their way into the soil. Once the microbes are established, they will out compete fungal pathogens, insects, and/or parasitic bacteria. Ultimately, Mikrobs will create a self-sustaining ecosystem with active propagation.

SUGGESTED USE: 1 tsp/ gal of distilled or tap water every 7-10 days. Can increase to 1 Tbsp for better output. Application interval by growth stage-vegetative development: 7-10 days, fruiting: 2 wks and to maintain general plant health against biotic/abiotic stresses: 2-3 weeks

1202500	Mikrobs – 8 oz pouch	\$22.90
1202501	Mikrobs – 1 lb pouch	\$43.50
1202502	Mikrobs – 5 lb pail	\$169.00

Cannot be shipped to the following states:AL, CA, CO, ID, IA, KS, LA, MD, ME, MN, MO, NE, ND, OH, OR, SC, SD, WY

FEATURED FERTILIZERS

These fertilizers provide needed NPK nutrients with bonus benefits.



NutriRoot®, 2-2-3

A Fertilizer & Water Management Product In One Brilliant Formulation.

DESCRIPTION: This ingenious blend of seaweed extract, nutrients, humic acid, humectants and surfactants provides valuable nutrition and microbial life to the root zone to encourage robust root development through its humectants. It will also enable the soil to extract water from the air and deliver it right to the root zone. Mitigates sand and/or dry soil. Reduces seasonal pressure and hinders water run-off.

SUGGESTED USE: Make applications at transplant, in fall after leaf senescence, in early spring before bud break or in the growing season after leaves on plants have matured. Dilute 1 1/4-1 1/2 fl oz/gal water or 1 gal/ 70-100 gals water. The rate of 1 gal/70-100 gals water will treat up to 3,000 sq ft of landscapes. Use higher rate for newly transplanted trees or for trees with root loss. Use lower rate for routine maintenance and to alleviate drought stress.

1300350	NutriRoot - Conc. - 8 fl. oz.	\$12.99
1300351	NutriRoot - Conc. - 32 fl. oz.	\$29.99
1300354	NutriRoot - Conc. - Gallon	\$99.99

Cannot be shipped to the following states: DC,OR

Mighty Plant™ Instant Compost Tea

Compost Tea Has Never Been Easier.



DESCRIPTION: This innovative product is a compost tea in water soluble powder form that requires no brewing. 100% natural with no fillers and densely packed with nutrition and beneficial microbes. It can be used on any plant under any nutrition program at any stage of plant growth. 1 lb makes 160 gallons of tea. More sanitary and less messy than brewing, while eliminating the risk of introducing pathogens that can occur in that process.

SUGGESTED USES: Unchlorinated water is highly recommended. Can be applied as a drench or spray on indoor and outdoor plants in soil/soilless media, transplants, clones/cuttings and trees. Most application rates are 1-2 tsp/gal water every 14-21 days or 1 lb/100 gals water. Rows: Evenly spread 1/2 cup/10 ft of row or 1 cup/ 100 sq ft and water in. Trees: Pot size 2-4", use 1 tsp. 6-10", use 1-2 tbsp. Trunk caliper 1-2", use 4 tbsp.

1305565	Mighty Plant Instant Compost Tea - 5 oz	\$18.00
1305566	Mighty Plant Instant Compost Tea - 1 lb	\$45.00
1305567	Mighty Plant Instant Compost Tea - 5 lbs	\$200.00

Cannot be shipped to the following states: AL, DE, IA, KS, KY, NJ, ND, OK, OR, RI, SC, VT, WA, WV, WY

Plant Thrive

18 Strains Of Beneficial Bacteria + 4 Strains Of Beneficial Fungi = A Terrific Product



DESCRIPTION: This microbial-based, granular product was designed to improve soil conditions for vigorous root growth, strong plant establishment, enhanced disease suppression, and increased resistance to plant and environment stress. Each ingredient has unique and valuable characteristics (to fight pathogens, stimulate plant growth, etc.), but when put together they form a synergistic powerhouse of benefits for all types of plants. Can be used as a soil amendment, foliar spray, drench for new and existing plants as well as hydroponics.

SUGGESTED USE: Do not co-apply this product with pesticides, fungicides, herbicides, insecticides, nematicides or fumigants. Wait 5-7 days between application of Plant Thrive and these agents. Application rates: Transplants up to 8": 1/2 scoop in the planting hole. Pot sizes: 4-8": 1/2 scoop, 1-2 gal: 1 scoop, 3-4 gal: 2 scoops, 5-10 gals: 3 scoops. Soil drench: Mix 1/2 - 3/4 scoop/gal water. Foliar spray: same as soil drench. Apply bi-weekly.

1202220	3 oz.	\$11.49
1202221	28 oz.	\$99.99



Seaweed fertilizers provide broad plant benefits and serve as biostimulants with vitamins, minerals and enzymes.



Solutions from the Sea

In addition to NPK, Seaweed and kelp-based fertilizers are valued for their many vitamins, minerals and enzymes including magnesium, zinc and iron.

They provide broad plant benefits throughout the growing cycle and can act as biostimulants. Kelp fertilizers are known to reduce the effects of stressors, boost plant recovery and limit nutrient burn as well as increase harvest yields.

Our ocean continues to grow kelp rapidly creating ample and renewable resources that can be converted to extracts, powders or liquids to deliver nutrient dense fertilizers for growers.

Maxicrop® Soluble Seaweed Powder, 0-0-17

Improves Germination & Helps Prevent Diseases.



TARGET: Soils that need additional minerals. Improving germination and plant vigor. Foliar feeding. Strengthening cuttings and bare root trees.

DESCRIPTION: Maxicrop Soluble Seaweed Powder is an organic powder fertilizer made from dried Norwegian seaweed (*Ascophyllum nodosum*). This highly soluble powder provides more than 70 different minerals, growth hormones, cytokinins, auxins, vitamins, and enzymes. Improves overall plant vigor and can prevent diseases such as downy and powdery mildews. Safe to use as often as necessary during the growing season for indoor and outdoor plantings.

SUGGESTED USE: 1 tsp/gal water or 2 lbs./acre over the season. 10.7 ounces of powder will make up to 65 gallons of product.

1313001	Maxicrop Soluble Seaweed Powder - 10.7 oz.	\$21.99
1313002	Maxicrop Soluble Seaweed Powder - 27 oz.	\$49.99
1313003	Maxicrop Soluble Seaweed Powder - 5 lbs.	\$89.99
1317202	Maxicrop Soluble Seaweed Powder - 44 lbs.	\$520.00



Maxicrop® Kelp Meal, 1-0-2

Successful Growers Choice To Correct Deficiencies & Improve Plant Nutrition!



TARGET: Deficient soils that need macronutrients. Transplanting Container Plants. General Feed Additive for Animals.

DESCRIPTION: Maxicrop Kelp Meal (1-0-2) is composed of slow-dried, ground seaweed derived from *Ascophyllum nodosum* - cleaned, desalted and dust free. This is a rich organic source of over 70 trace minerals (including calcium, magnesium, sulfur, and chlorine) as well as vitamins, amino acids and plant hormones. It is an excellent soil additive that stimulates microbial activity and provides a strong supply of naturally chelated nutrients.

SUGGESTED USE: Incorporate into potting soils, seed and transplant beds. Top or side dress gardens and farms. Excellent for hydroponic growing. 1 cup/100 sq.ft.; 55 lbs. treats ≈3,000 sq. ft.; 2,200 lbs. treats ≈3 acres

1314801	Maxicrop Kelp Meal - 5 lbs.	\$26.99
1314804	Maxicrop Kelp Meal - 55 lbs.	\$125.50



These time-tested favorites can be the foundation of your soil fertility plan.

AgroThrive™ Fruiting & Flowering Fertilizer, 3-3-5



Multiple Organic Accreditations For One Exceptional Fertilizer.

TARGET: Gardeners looking for balanced organic nutrition for fruiting and flowering plants.

DESCRIPTION: Designed to nurture vegetables, fruit and flower-bearing plants, this premium organic formulation will not only feed your plants the nutrients they crave, it will enhance soil microbial activity by activating indigenous micro-flora in the soil. This healthy soil activity will create a smooth release for, and improved availability of, the nutrients (70% fast release, 30% slow release). You will see faster growth of vibrant blooms and higher yields of flavorful crops in no time. Derived from fish inedibles, grain, and sulfate of potash and sourced from repurposed organic material. OMRI, CDFA, USDA and WSDA listed/certified organic.

SUGGESTED USE: Mature Plant Application: Mix ½ cup of product with 1 gallon of water to cover 35 sq. ft. of garden and apply every 2 weeks. Nursery & Foliar Applications: Mix 3 Tbsp of product with 1 gallon of water to cover 150 sq. ft. and apply weekly.

1314750	AgroThrive Fruiting & Flowering Fertilizer - 32 oz.	\$20.97
1314752	AgroThrive Fruiting & Flowering Fertilizer - Gallon	\$38.97
1314753	AgroThrive Fruiting & Flowering Fertilizer - 2.5 Gallons	\$78.93



AgroThrive™ General Purpose Fertilizer, 3-3-2



This Easy-To-Use Fertilizer Has Numerous Organic Accreditations.

TARGET: Growers with a variety of plants looking for an organic, liquid bio-fertilizer.

DESCRIPTION: This all-in-one solution liquid bio-fertilizer provides balanced organic plant nutrition with the added benefit of enhancing soil microbes. Derived from sustainable sources, including repurposed organic material, AgroThrive General Purpose works to promote faster growth with healthier, stronger plants. OMRI, CDFA, USDA, and WSDA certified.

SUGGESTED USE: Mature Plant Application: Mix ½ cup of product with 1 gallon of water to cover 35 sq. ft. of garden. Apply every 2 weeks. Nursery & Foliar Applications: Mix 3 TBSP of product with 1 gallon of water to cover 150 sq. ft. Apply weekly.

1314760	AgroThrive General Purpose Fertilizer – 32 oz.	\$19.97
1314762	AgroThrive General Purpose Fertilizer – Gallon	\$36.97
1314763	AgroThrive General Purpose Fertilizer – 2.5 Gallons	\$74.93



Neptune's Harvest Fish & Seaweed Fertilizer, 2-3-1

The Best Of Both Products For A Complete Fertilization Program.

1315011	Quart	\$22.99
1315013	Gallon	\$54.99

Neptune's Harvest Fish Fertilizer, 2-4-1

Versatile Without Unpleasant Odors!

1315000	Quart	\$18.99
1315002	Gallon	\$46.99

Neptune's Harvest Seaweed Plant Food, 0-0-1

Contains Over 60 Naturally Occurring Nutrients & Amino Acids!

1315011	Quart	\$22.99
1315013	Gallon	\$54.99

See online for shipping restrictions and additional sizes.



FERTILIZERS

Down To Earth fertilizers are ideal for enhancing soil fertility and stimulating plant growth with sustainable solutions.



DTE Acid Mix, 4-3-6

One Of The Best Fertilizers That Is Specially Formulated For Acid Loving Plants!

1300200	Down To Earth Acid Mix Mini - 1 lb.	\$5.99
1300201	Down To Earth Acid Mix - 5 lbs.	\$17.99

DTE All Purpose Mix, 4-6-2

Fertilizer For All Of Your Growing Needs!

1300209	Down To Earth All Purpose Mix Mini - 1 lb.	\$5.99
1300207	Down To Earth All Purpose Mix - 5 lbs.	\$17.99

DTE Bat Guano, 7-3-1

High-Nitrogen Fertilizer From Bat Guano.

1300006	Down To Earth Bat Guano Mini - .25 lb.	\$5.99
1300007	Down To Earth Bat Guano - 2 lbs.	\$17.99
1300008	Down To Earth Bat Guano - 10 lbs.	\$47.79

DTE Bio-Fish, 7-7-2

Nitrogen & Phosphorus Rich For Robust Fruit & Blooms.

1300315	Down To Earth Bio-Fish - 5 lbs.	\$20.99
---------	---------------------------------	---------

DTE Bio-Live, 5-4-2

A Microbe-Rich Fertilizer To Help Build Living Soil!

1300259	Down To Earth Bio-Live - 4 lbs.	\$20.99
1300261	Down To Earth Bio-Live - 25 lbs.	\$81.99

DTE Blood Meal, 12-0-0

High In Nitrogen – The Key For Leafy Greens & Healthy Bulbs!

1300300	Down To Earth Blood Meal Mini - .5 lb.	\$5.79
1300304	Down To Earth Blood Meal - 4 lbs.	\$23.99

DTE Bone Meal, 3-15-0

Help Your Plants Have The Best Chance To Establish Healthy Roots & Flowers!

1300219	Down To Earth Bone Meal - 5 lbs.	\$19.99
---------	----------------------------------	---------

DTE Citrus Mix, 6-3-3

The Nutrients You Need For Vibrant & Delectable Citrus!

1300295	Down To Earth Citrus Mix - 1 lb.	\$5.99
1300296	Down To Earth Citrus Mix - 5 lbs.	\$19.79

DTE Crab Meal, 4-3-0

Versatile Fertilizer That Provides Nutrients, Is An Excellent Compost Amendment & Has Nematicidal Properties!

1300227	Down To Earth Crab Meal - 4 lbs.	\$17.99
---------	----------------------------------	---------

DTE Fish Bone Meal, 4-12-0

Marine Based Bone Meal For All Of Your Growing Needs.

1300286	Down To Earth Fish Bone Meal Mini - 1 lb.	\$5.79
1300287	Down To Earth Fish Bone Meal - 5 lbs.	\$16.99

FERTILIZERS

Organic fertilizers add nutrients to the soil for uptake by plants for healthy, productive soil.



DTE Flower Garden, 2-6-5

Make Every Blossom Pop With This Organic Mix.

1300360	Down To Earth Flower Garden - 1 lb.	\$5.99
1300361	Down To Earth Flower Garden - 5 lbs.	\$19.79

DTE Fruit Tree, 6-2-4

Turn Backyard Fruit Trees into Super-Producers.

1300270	Down To Earth Fruit Tree - 5 lb.	\$19.79
1300272	Down To Earth Fruit Tree - 15 lbs.	\$46.99
1300271	Down To Earth Fruit Tree - 25 lbs.	\$58.99

DTE Rose & Flower Mix, 4-8-4

USDA Organic. A Nutrient-Rich Fertilizer That Invigorates Roses, Bulbs & Flowering Plants!

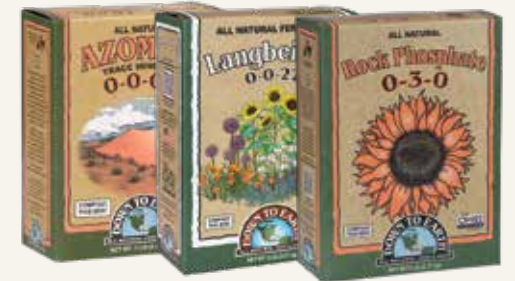
1300233	Down To Earth Rose & Flower Mini - 1 lb.	\$5.99
1300231	Down To Earth Rose & Flower Mix - 5 lbs.	\$19.79

DTE Vegetable Garden, 4-4-4

Give Your Vegetable Garden A Powerful Nutrient Boost!

1300298	Down To Earth Vegetable Garden - 1 lb.	\$5.99
1300299	Down To Earth Vegetable Garden - 5 lbs.	\$17.99
1300294	Down To Earth Vegetable Garden - 15 lbs.	\$44.99

SOIL AMENDMENTS



DTE Azomite Powder, 0-0-0.2

The A To Z Of Minerals Including Trace Elements.

1309300	Down To Earth Azomite Powder - 1 lb.	\$5.49
1309301	Down To Earth Azomite Powder - 5 lbs.	\$13.99

DTE Granular Humic Acids

Highly Concentrated & Easy To Use!

1300321	Down To Earth Granular Humic Acids - 5 lbs.	\$14.39
---------	---	---------

DTE Azomite Granulated, 0-0-0.2

The A To Z Of Minerals Including Trace Elements.

1309320	Down To Earth Azomite Granulated - 5 lbs.	\$14.49
---------	---	---------

DTE Langbeinite, 0-0-22

Potassium, Magnesium & Sulfur — All in a Water-Soluble Form

1300263	Down To Earth Langbeinite - 5 lbs.	\$19.39
---------	------------------------------------	---------

DTE Rock Phosphate, 0-3-0

Dose Your Soil With This Before Planting – Your Plants Will Love You For It.

1300269	Down To Earth Rock Phosphate - 5 lbs.	\$17.39
---------	---------------------------------------	---------

See online for shipping restrictions and larger sizes.

Add pathogen protection early by introducing beneficial microbes and/or competitive fungi to your soil.

Regular monitoring for signs of fungal or bacterial infestation allows for early intervention.



Serenade® ASO

Contains A Powerful Soil Bacterium That Controls Many Common Diseases.

TARGET: *Alternaria*, Anthracnose, Blights, *Botrytis*, Damping-Off, Downy Mildew, *Erwinia*, *Fusarium*, Leaf Spots, *Monilinia*, Phomopsis, Powdery Mildew, *Pseudomonas*, *Pythium*, *Rhizoctonia*, *Sclerotinia*, Sooty Blotch, Sour Rot, *Xanthomonas* and more.

DESCRIPTION: Designed to be applied preventatively, this OMRI listed biofungicide uses *Bacillus subtilis* QST 713 to control soil and foliar bacterial and fungal diseases. It forms a biofilm around seeds, roots and transplants; kills outright; promotes enhanced photosynthesis and healthy growth that can ward off disease. Can be applied to most common crops. Non-toxic to beneficials. 0-day PHI & 4-hr REI. No resistance risk.

SUGGESTED USE: Apply with spray equipment for ground and aerial applications and irrigation systems used for chemigation. Most effective when used preventatively. May be used with other fungicides and pesticides (with restrictions). Rate: 2-6 qts/acre or 1.28-3.8 oz/gal of water. Re-treat in 2-10 day intervals. A surfactant may improve efficacy.

1332910 Serenade ASO – 2.5 gallons \$150.00



Cease® Biological Fungicide

For Control Of Soil Pathogens That Cause Fungal & Bacterial Plant Diseases.

TARGET: *Alternaria*, Anthracnose, *Botrytis*, *Didymella bryoniae* (gummy stem blight), *Entomosporium*, *Erwinia*, *Fusarium*, powdery mildew, *Pseudomonas*, *Xanthomonas*, *Rhizoctonia*, *Pythium*, *Phytophthora* and more.

DESCRIPTION: Cease is an organic contact fungicide/bactericide containing a patented strain of *Bacillus subtilis*. It works by occupying space that the invading pathogens would use and then it disrupts the germination and growth of those pathogens. OMRI listed and NOP compliant. Can be used in combination and/or rotation with other products. 0-day PHI interval and 4-hours REI. No phytotoxicity or residues on flowers or foliage.

SUGGESTED USE: Use 2-8 qts/100 gals water about once a week. See label for crop and disease-specific directions. Suitable for wet applications, but use of a spreader/sticker is recommended under those conditions.

1332724 Cease - Gallon \$121.00
 1332727 Cease - 2.5 Gallons \$246.00
 1332725 Cease - Gallon, Case of 4 \$435.60
 1332728 Cease - 2.5 Gallons, Case of 2 \$467.40



Actinovate® AG

Developed For Commercial Ag – Now Available To All Growers.

TARGET: Use to control damping-off, root and stem rot, charcoal rot and wilt caused by many different pathogens. Also controls Downy Mildews and Powdery Mildews.

DESCRIPTION: This organic biological fungicide/bactericide uses a microbe (*Streptomyces lydicus* WYEC 108) for the suppression and control of a wide swath of soil-borne and foliar diseases. This *Streptomyces* strain will colonize the root system and foliage of plants, which will not only displace pathogenic fungi present there, it will protect it from further fungal development. Water-soluble, will not clog machinery and doesn't require constant agitation when applying. 4-hr REI.

SUGGESTED USE: Use in foliar applications, as a soil drench, in irrigation, chemigation, as a dip, and more. Do not use at temperatures below 45°F. **Foliar Spray:** Mix with 10-150 gals water/acre (in CA, mix with 20-150 gals water/acre). Apply initial application prior to disease onset or in the early stages of disease development. Crop-specific instructions on label.

1420012 Actinovate AG - 18 oz. Bag \$165.00
 Cannot be shipped to the following states: PR



RootShield® Plus Granules & RootShield® Plus WP

Use This Biological Fungicide To Eliminate Hard To Control Diseases!

TARGET: Plant pathogens and resulting diseases such as *Phytophthora*, *Rhizoctonia*, *Pythium*, *Fusarium*, *Thielaviopsis*, and *Cylindrocladium*.

DESCRIPTION: OMRI listed and EPA registered, this product will help eliminate damaging fungal pathogens by colonizing plant root systems and by boosting biological diversity of the rhizosphere. This unique product is comprised of live microbial beneficial fungi *Trichoderma harzianum* strain T-22 and the newly developed *Trichoderma virens* strain G-41, delivering an extended array of pathogen control.

SUGGESTED USE: For control and prevention of major fungal pathogens and resultant diseases on greenhouse and nursery vegetables, herbs, ornamentals, fruits, conifer tree seedlings, various trees, legumes, oil seeds and peanuts. One application will last for approximately 12 weeks, and can be used with a 0-hr REI. This product can be used in conjunction with certain other fungicides, see label and other online resources for details. For granular usage, mix about 1.5-3 lbs. to 1 cu. yd. of mix or about four 40 lb. bags to 100 cu. yds. of soil mix. For WP, use about 6 oz. of powder to 100 gal. of water. For plug trays, flats and small pot with 1-3 in. of soil, use about 100 gal. mix/800 sq. ft. For beds and pots 4-5 in. deep, use about 100 gal. mix/400 sq. ft. For azalea pots 6 in. deep, use about 100 gal. mix/1600 pots.

1332756 RootShield Plus WP - 1 lb. Bag \$160.00
 1332757 RootShield Plus WP - 3 lb. Box \$315.00
 1332755 RootShield Plus Granules - 40 lb. Bag \$490.00

Larger sizes available.

Granular cannot be shipped to: AK • WP cannot be shipped to: AK



LALSTOP® K61 WP

Prevent Fungal Pathogens in the Root Zones of Crops.

TARGET: Fungal root diseases, *Fusarium*, *Pythium*, and *Phytophthora* species.

DESCRIPTION: LALSTOP K61 WG uses abeneficial microbe (*Streptomyces* strain K61) to prevent soil-borne pathogens like *Fusarium*, *Pythium*, and *Phytophthora* before they can cause any damage. It colonizes the roots of your plants, creating a defensive barrier that protects against damping off, wilt, and other root pathogens. It's residue-free on edible crops, OMRI Listed, and works well with other treatments.

SUGGESTED USE: Apply as a soil drench, spray, or through drip irrigation to protect seedlings, young plants, or established crops from common pathogens. Ideal for use in organic gardening, hydroponics, and commercial growing systems. Use it on field crops, greenhouse plants, fruits, turf, ornamentals, flowers, hydroponic crops, and cannabis plants.

1332986 Lalstop K61 WP - .88 oz \$20.00
 1332983 Lalstop K61 WP - 3.5 oz \$67.00

Cannot be shipped to the following states: DC, HI, IA



MilStop® SP Foliar Fungicide

Excellent For Controlling Powdery Mildew & Other Fungal Diseases!

TARGET: Powdery mildew, *Alternaria* blight, Anthracnose, black spot, *Botrytis* blight, *Cercospora* leaf spot, downy mildew, *Phomopsis* blight, and *Septoria* leaf spot.

DESCRIPTION: MilStop SP is an OMRI listed foliar fungicide. This potassium bicarbonate-based fungicide kills powdery mildew on contact by pulling water from spores and their growing strands. It also inhibits enzymes involved in fungal cell wall formation by altering the pH on the leaf surface. Foliar applications provide 1-2 weeks of residual protection.

SUGGESTED USE: MilStop must be mixed with water before spraying. Field applications: Mix 2-5 lbs. per acre in a volume of water sufficient for complete coverage of plant foliage. Greenhouse applications: Mix 1.25 - 5 lbs per 100 gallons of water. (See label online for specific crops, diseases and application systems.)

1332766 MilStop SP Foliar Fungicide - 5 lbs. \$82.00
 1332767 MilStop SP Foliar Fungicide - 25 lbs. \$330.00



Some diseases can be treated foliarly to halt ongoing fungal damage.

Cueva® Fungicide Concentrate



Kills Fungal & Bacterial Plant Diseases With Good Ole' Copper Soap.

TARGET: *Alternaria*, anthracnose, spots, bacterial blast, bacterial cankers, specks, rots, black pod, blotch, molds, *Botrytis*, downy mildew, fireblight, fly speck, leaf smut, knots, powdery mildew, *Rhizoctonia*, rusts, scab & more.

DESCRIPTION: Organic Cueva combines a soluble copper fertilizer with a fatty acid to create a true soap in a patented flowable liquid formulation. This formula lets the product spread easily across plant surfaces and helps the copper get into fungal or bacterial cells and destroy them. As it moves across the plants and into the cells, it forms a protective layer that creates a hostile environment for pathogens.

SUGGESTED USE: On vegetables, field-grown herbs and crops, nuts, fruits, citrus and berries: Mix 0.5-2.0 gals/30-100 gals of water and apply to one acre. Begin treatment when disease first appears and reapply at 7-10 day intervals. This schedule may vary somewhat according to crop specific application needs. Use the higher rate following heavy rain or when the amount of disease is increasing rapidly. If possible, time applications so that 12 hours of dry weather follow application. Use the higher rate to control diseases that may go dormant and overwinter.

1332920 Cueva Fungicide Concentrate - 2.5 Gallons \$143.50



Monterey Complete Disease Control



This Biofungicide/Bactericide Works As A Spray Or As A Drench.

TARGET: Blights, molds, spots, rots and mildews.

DESCRIPTION: This organic, broad-spectrum preventative biofungicide/bactericide contains *Bacillus amyloliquefaciens* strain D747. When used as a soil drench, this naturally occurring bacterium goes straight to the plant's roots, where it will establish itself and grow. This colonization prevents the establishment of disease-carrying bacteria and fungi in the soil. Used as a foliar spray, this bacterium will overcome any pathogenic spores present on foliage.

SUGGESTED USE: Standard mix rate: 1 tsp. /gal. of water. Foliar spray: Repeat every 7-10 days or as needed. As a soil drench: Drench the roots of transplants with approximately 4 fl. oz. immediately before transplanting. Lawns/Grassy Areas: Apply as a fine spray to the surface area. 2-5 gals/1,000 sq. ft. of lawn.

1458203 Complete Disease Control - 32 oz. RTU \$17.99
 1458204 Complete Disease Control - 32 oz. Hose-End RTS \$40.49
 1458200 Complete Disease Control - 8 oz. Concentrate \$17.49
 1458201 Complete Disease Control - Pint Concentrate \$23.49
 1458202 Complete Disease Control - Gallon Concentrate \$128.49

SKUs 1458200, 1458201, 1458202 & 1458204 cannot be shipped to the following states: ND



Thyme Guard®



The Highest Percentage Of Thyme Oil Readily Available On The Market Today.

TARGET: Diseases: *Botrytis*, blights, *Phytophthora*, powdery & downy mildew, citrus canker & Citrus Greening (HLB). Insects: thrips, aphids, psyllids, scale, whiteflies & mites.

DESCRIPTION: This unique product contains a strong dose thyme oil. This essential oil is well known to be highly-effective against bacterium, fungi and viruses and sucking insects. With plant pathogens, it attacks and breaches the cellular membranes of pathogens, causing their death. As an insecticide, it works as an endocrine disruptor, suffocant and repellent. 100% biodegradable, will not generate resistance and can be used at any time in the growing cycle. Effective against the Asian citrus psyllid.

SUGGESTED USE: Tank mixable with most other chemicals, but it is best to use other products in rotation with this one. Do not mix with peroxides and/or sulfonated fungicides (which may cause phytotoxicity). Always test for compatibility. For established crops: Dilute at a rate of 0.5% (2 qts./100 gals. water or 1:200). For new crops & prevention: Dilute at a rate of 0.25% (1 qt./100 gals. water or 1:400).

1458300 Thyme Guard Concentrate - 32 oz. \$32.97
 1458301 Thyme Guard Concentrate - Gallon \$118.33

Cannot be shipped to the following states: CT, IN, KY, MD, MA, MT, NV, NM, NY, PA, SD, VT, VA, WY



Preventing reinfestation and spread of pathogens relies on properly cleaned equipment and tools.

CLEANING & SANITIZING

ZeroTol® HC



Clean Up & Protect Your Plants With One Powerful Product.

TARGET: *Alternaria*, Anthracnose, *Aphanomyces*, molds & mildews, bacteria, spots & rots, *Erwinia*, *Phytophthora* (blights, rots), *Plasmopara*, *Pseudomonas*, *Pythium*, *Rhizoctonia*, rust, scab, smut, *Thielaviopsis*, *Xanthomonas*, wilts & blights, fungi, algae and Tobacco Mosaic virus.

DESCRIPTION: ZeroTol HC has been designed for use in hemp and cannabis production and for homeowners and hobby growers. Use this OMRI listed product on hard, non-porous surfaces to eliminate pathogens that linger there. It can also be applied to soil and directly to all kinds of plants to prevent/treat/control many common plant diseases and algae growth. Made from Hydrogen Peroxide and Peroxyacetic Acid. No strong odor or toxic residue.

SUGGESTED USE: Do not combine or mix with any other pesticide concentrates. Do not reuse solution; make fresh daily. Surfaces/equipment: Dilute at 1:150 or .85 fl oz/gal water. Foliar: Dilute at 1:150 or .85 fl oz/gal water for initial treatment. Apply as needed for control. For prevention: Apply every 5-7 days at 1:200 or 0.64 fl oz/gal water. If disease reappears, apply every 3 days. Turf: Dilute 1.3 fl oz/gal water. 3-10 gals treats approximately 1,000 sq. ft.

1222410 ZeroTol HC - Gallon Concentrate \$42.99
 Cannot be shipped to the following states: DC



The Power of Peroxyacetic Acid

Similar in chemical makeup, SaniDate 5.0 and OxiDate 2.0 are two very different products with very different uses.

SaniDate 5.0 is a no rinse required sanitizer for greenhouse use. Using a peroxy compound, SaniDate can quickly and effectively reduce harmful pathogens. Not only can this product be used on hard surfaces in the greenhouse, it can be used for equipment sanitation, food prep surfaces and also irrigation lines. It can also be used as a post-harvest sanitizer. Mix SaniDate in your dip tank or spray directly onto harvested fruits and vegetables to prevent the pathogens that cause spoilage. SaniDate is a great, environmentally responsible alternative to chlorine.

OxiDate 2.0 is a pre-harvest bactericide and fungicide. OxiDate can be used in certified organic and conventional agriculture. Not only does OxiDate help prevent plant pathogens, it works as a curative product by killing fungal spores and bacterial inoculum. OxiDate does not have a REI and can be used until harvest. This product can be tank mixed with fungicides and insecticides for extra protection and because of the active ingredient is peroxygen, there is not concern of resistance.

SaniDate 5.0



Sanitizer and Disinfectant for Commercial Agricultural Use.

1222515 SaniDate 5.0 - 2.5 Gallons \$245.00
 1222517 SaniDate 5.0 - 5 Gallons \$335.00

OxiDate 2.0



OxiDate® 2.0 Concentrate for Cleaning Greenhouses and Tools

1222501 OxiDate 2.0 - 2.5 Gallons \$235.00
 1222502 OxiDate 2.0 - 5 Gallons \$340.00



ZeroTol 2.0



Kills Pathogens On Plants As Well As Bacteria, Algae & Fungi On Hard Surfaces.

1222401 Zeritol - 2.5 Gallons \$275.00

Applied early in spring to grass and grounds, corn gluten acts as a pre-emergent weed suppressant.

PRE-EMERGENT

Gluten-8

A Liquid Pre-Emergent Herbicide That Provides Control Of Weeds In Both Turf And Beds.



TARGET: Crabgrass and other broadleaf weeds including dandelions and clover.

DESCRIPTION: Formulated from corn gluten meal, this pre-emergent delivers organic proteins into soil that prevent weeds from growing. This liquid formulation can be applied with a sprayer three weeks before or after seeding. Pre-emergents work best before weed germination in late spring.

SUGGESTED USE: Mix 32 ounces of concentrate with 1.5-2 gallons of water to treat 1,000 sq. ft., agitate before use, wait 24 hours to irrigate and do not apply if rain is expected.

1273010 Gluten-8 - Gallon **\$44.95**
Case sizes available.

Sustane® Spring Weed & Feed, 9-0-0



Prevent Weeds & Feed Your Lawn With This Organic Corn Gluten Meal.



TARGET: Barnyard grass, Bermuda grass, crabgrass, creeping bentgrass, curly dock, dandelions, foxtail, lambsquarter, pigweed, plantains, purslane, redroot bigweed, smart weed and more.

DESCRIPTION: This OMRI listed corn gluten meal works wonders in 2 ways: it is a natural broadleaf pre-emergent that suppresses weeds to prevent them from establishing and it provides high levels of nitrogen to green up already established plants and turf. For use as an herbicide, apply before germination of seeds. Should not be applied to new seedlings or when laying sod.

SUGGESTED USE: Apply 6 lbs. per 1,000 sq. ft. with a broadcast spreader. Provides 0.54 lbs. of nitrogen per 1,000 sq. ft. A 30 lb. bag covers up to 5,000 sq. ft. Apply up to 20 lbs. per 1,000 sq. ft. for enhanced weed prevention.

1226810 Sustane Spring Weed & Feed - 30 lb. Bag* **\$95.00**
*Free Shipping in the contiguous 48 states. Ships via Ground ONLY.

Cannot be shipped to the following states: CA,FL,IL,MS,MT,NM,NV,OR,PA,UT,WA

Earth Harvest Gluten-8 Liquid Corn Gluten - Set of 2

Easy-To-Apply Liquid Weed Control Without The Effort Of Lifting A Heavy Bag Of Corn Gluten Meal.



TARGET: Pre-emergent weed control and mild nitrogen fertilizer.

DESCRIPTION: Water-soluble and derived from corn gluten meal, it provides pre-emergent control of annual grasses and broadleaf weeds without the effort of applying the granular corn gluten. This product is packaged in a container that has a hose-end spray head for a reliable application.

SUGGESTED USE: A 2 quart set of Gluten-8 represents a 40 pound bag of corn gluten meal and treats approximately 2,000 sq. ft.

1273015 Gluten-8 Liquid Corn Gluten - Set of 2 - 32 oz. Hose End **\$29.45**

These eco-friendly paper products form a barrier over the soil and inhibit weed growth.

WeedGuardPlus® - Heavy Weight Rolls

This Tough Weed Block Will Hold Up Under The Elements!



TARGET: Use for weed suppression.

DESCRIPTION: This paper weed block is adaptable to nearly any size growing operation in nearly any environment. 100% biodegradable; no need to remove it. Saves time; just lay it down before planting and save yourself countless hours of weeding, spraying or disposing of materials. Or apply it on top of existing weeds and/or invasive plant roots and smother them out. Saves money; no need to buy expensive herbicides. Improves yields; your plants will have a chance to establish themselves without competing with weeds. Porous yet strong; so plants can be watered by natural rainfall or by other means. Allows air flow. Maintains this porosity through all but the most severe of weather. Can be applied by machine or by hand. These rolls are excellent for textured soils and/or those projects that are meant to be long-term. 54% heavier than the standard rolls and offers 12+ months of weed control.

SUGGESTED USE: Put in place before you install transplants or seedlings, or before you sow seeds. Simply prepare the ground, place over the soil, and cover the edges with dirt. Product may be affected by variances in weather or soil conditions.

1453851 Heavy Weight - Smooth Finish - 36" x 100' **\$49.79**
1453852 Heavy Weight - Smooth Finish - 48" x 100' **\$64.49**

EcoMulch Rolls



Season-Long Weed Protection With No Clean Up



TARGET: Home gardening, commercial growers, organic growers, nurseries, seasonal landscaping, habitat restoration and more.

DESCRIPTION: This is an OMRI listed seasonal-use weed barrier paper that offers superior weed prevention from planting through harvest. Made from 100% natural, biodegradable fibers sourced from corrugated box clippings, this product will decompose slowly over the growing season. At the end of the season till any remaining paper into the soil. Adds texture and organic matter to soil. Porous to allow air, water and nutrients to pass through. Opaque to keep weeds from developing past germination. Creped finish makes it more flexible for easy application and dark color keeps soil warm.

SUGGESTED USE: Can be applied by hand, by tractor or by a mechanical mulch layer. Suitable for overhead or drip tape irrigation methods. Do not attempt application on a windy day. Put in place before you sow seeds or install transplants and seedlings. Product may be affected by variances in weather or soil conditions.

1453858 EcoMulch - 24" x 50' rolls – 2 pk - Creped **\$25.49**
1453859 EcoMulch - 36" x 50' rolls – 2 pk - Creped **\$36.99**

SELECTIVE

BONIDE® Captain Jack's™ Lawnweed Brew

Kills the Weeds – Not Your Lawn.



TARGET: Moss, algae, lichens, liverwort, lawn diseases (dollar spot, rust, snow mold), and common broadleaf weeds such as dandelion, clover, chickweed and thistle.

DESCRIPTION: This product offers pre-and post-emergent control using an active ingredient derived from Iron(Fe). Mixes quickly and thoroughly with water and works quickly (within hours) to kill down to the roots. Can be applied in temperatures down to 50°F and is rainfast in 3 hours. Once the spray has dried, treated areas are safe for people and animals. Do not apply to recently seeded lawns, but lawns can be reseeded 1 day after application. Gives lawns a green-up.

SUGGESTED USE: Use with any standard handheld, backpack, compression or knapsack sprayer. Mix 1 part product with 24 parts water (5 fl oz in 1 gal water). Repeat in 3-4 wks for spot control. Pre-emergent control; Apply 5-10 gals of spray solution/1,000 sq ft depending on weed pressure. Reapply 3-6 wks later. Ensure lawn is well watered before application. Do not apply to bentgrass. Do not apply at temps over 85°F. Do not apply if rainfall is expected with 3 hrs of application. Do not apply to the same area more than 4 times a year. To avoid staining, wait until treated area dries before re-entry.

1453752 Captain Jack's Lawnweed Brew - 32 oz. Conc. **\$21.99**

Broad spectrum herbicides use a variety of active ingredients to kill weeds, grasses and other unwanted vegetation.

SNS WeedRot™

An All-Round Excellent Choice For Non-Toxic Weed Control.



TARGET: Star Thistle, Clover, Spurge, Dandelions and other weeds.

DESCRIPTION: This post-emergent, non-selective weed killer uses Citric Acid to efficiently knock down and kill many of the most problematic common weeds. It works on weeds in two ways: it adheres to and begins to remove the waxy outer layer on the plant and it penetrates well into the roots to block the plant's ability to take in amino acids and nutrients. Will not persist in or cause harm to soil. Starts browning weeds in 1-2 days, with a complete kill in 5-10 days. EPA Exempt Title 25b. When used as directed, not harmful to people or pets.

SUGGESTED USE: Spray directly on leaves and stems, saturating the entire plant. Works best on plants less than 6" in height; weeds larger than 6" may require additional applications. Start with 24 oz. of concentrate and add 104 oz. of water to make 1 gallon of Ready to spray mixture. More or less of the concentrate can be mixed based on weed size and weed type.

1453765	Pouch Conc. (Makes 32 oz)	\$7.99
1453762	Gallon	\$67.50
1453764	5 Gal (2 x 2.5)	\$312.50

Cannot be shipped to the following states: AL, AK, AZ, AR, CO, CT, DE, FL, GA, ID, IN, IA, KS, KY, LA, ME, MD, MI, MS, MT, NV, NM, NC, ND, OH, OK, RI, SC, SD, UT, VA, VT, WA, WV, WI, WY

Earth's Ally® Weed & Grass Killer

Simple Ingredients Create Superb Results.



TARGET: Kills all common weeds, including broadleaf, crabgrass, dandelion, clover, ivy, chickweed and more.

DESCRIPTION: This non-selective herbicide uses sea salt (sodium chloride) to thoroughly eliminate unwanted weeds without harsh chemicals and side-effects found in glyphosate herbicides. Kills down to the roots with visible results in 3 hrs. Contains no pre-emergent qualities and will not inhibit future plant growth. Replant or sod once the area is dry. Pet and bee friendly when used as directed.

SUGGESTED USE: RTU: Shake and spray during dry weather in full sun saturating the targeted weeds' leaves and base taking care to avoid desirable plants. Concentrate: Mix pouch with 1 gal. of water, shake, and apply as directed.

1459345	Earth's Ally Weed & Grass Killer - 1.25 lb Conc Pouch	\$12.99
1459340	Earth's Ally Weed & Grass Killer RTU - 24 oz.	\$12.99
1459341	Earth's Ally Weed & Grass Killer RTU - Gallon	\$29.99

BONIDE® Captain Jack's™ Deadweed Brew

Uses Caprylic Acid To Quickly & Safely Kill Unwanted Vegetation.



TARGET: Broadleaf weeds, grasses, algae and moss (both perennial and annual).

DESCRIPTION: This non-selective herbicide can be used anytime of the year but works best during warm and dry conditions. Can be applied virtually anywhere around the home and garden to control existing weeds, either before or after planting. Will not translocate. Pint bottle treats up to 1,600 sq. ft. and quart treats up to 3,200 sq. ft. Pint makes up to 4 gals finished spray; qt makes up to 8 gals and gal makes up to 32 gals.

SUGGESTED USE: Apply with a handheld or backpack type of sprayer. Apply the mixed solution at 2 1/2 - 7 1/2 gals/1,000 sq. ft. (lower rates for small weeds, higher rates for larger ones). Spray weed thoroughly, using a coarse nozzle setting to reduce drift. Damage will be visible from a few hours to a few days after spraying. Re-treat every 2-3 weeks.

1453781	Deadweed Brew - Quart Concentrate	\$32.99
1453786	Deadweed Brew - Gallon Concentrate	\$149.99

Nonselective herbicides can be used around hardscaping and driveways. Use caution around garden and flowers.

Torched Weed Killer

This Non-Selective Oil-Based Herbicide Digs Deep To Kill The Root.



TARGET: Unwanted grasses and weeds.

DESCRIPTION: The combination of Clove Oil, Cornmint Oils and soaps offers effective control of unwanted weeds and grasses. When used as directed, Torched is safe for use our people and pets. This non-selective, post emergent herbicide works best at temperatures over 60°F and generally only takes one application (except for those especially tough weeds). It begins working on contact and does not stop until it has killed down to, and including, the root.

SUGGESTED USE: Mix 8-10 oz per gal/water. Apply when weeds are actively growing. Re-treat if it rains within 25 hours of spraying. If needed, reapply to hard-to-kill weeds after 5 days. Protect desirable plants during application by shielding them with cardboard or plastic. If accidentally sprayed, immediately rinse the plants and surrounding area with large amounts of water.

1453890	Torched Weed Killer - Gallon	\$87.99
1453891	Torched Weed Killer - 2.5 Gallons	\$170.99

Homeplate®



A Fast-Acting Non-Selective Herbicide That's A Total Vegetation Killer.

TARGET: Common annual, biennial and perennial broadleaf weeds as well as algae and moss.

DESCRIPTION: This OMRI listed organic spray is a blend of caprylic acid and capric acid that spreads easily for thorough coverage and causes rapid weed burndown. Total kill is generally within 12-72 hours. If rain falls within 3 hrs of treatment, an additional spray may be required. For best results, use during sunny or warm conditions. Optimize your spray coverage and target small weeds. For use in and around all food and non-food crops. 24-hr REI & 0-day PHI.

SUGGESTED USE: Can be used in pre/post-planting applications, sucker control, trimming and pruning, as a harvest aid and as a desiccant. Not for use in any kind of irrigation system. Use 3% solution for weeds under 5" tall and for moss and algae. Use 3-6% solution for larger perennial weeds and grasses. Use 5-9% solution for tough to kill weeds, vines, brush and sucker control. Apply the mixed solution at 0.69-9.2 gallons/1,000 sq. ft. (35-400 gallons/acre). In situations where weed pressure is high and/or weeds are larger than 5 inches, higher volumes are advised for acceptable control. Repeat treatment as needed to control new weeds.

1453895	Homeplate - 2.5 Gallons	\$205.00
1453896	Homeplate - 2.5 Gallons (Case of 2)	\$369.00

BioSafe Weed & Grass Killer

This Soap-Based Weed Killer Produces Visible Results Within 24 Hours.



TARGET: For control and burndown suppression of annual & perennial broadleaf and grasses. Also controls spore producing plants such as mosses and liverworts.

DESCRIPTION: BioSafe Weed & Grass Killer is a non-selective herbicide that works on contact when applied as a foliar application with a manual sprayer. For best results, cover plant leaves thoroughly and uniformly with spray. Take care to avoid contacting wanted plants. This soap product uses Ammonium Nonanoate to penetrate the cell walls of the plant to disrupt their normal functioning and cause death. This product does not move through the soil or between plants and leaves no harmful residue.

SUGGESTED USE: Do not apply this product through any type of irrigation system. Use a hand-held or hose-end sprayer that produces a uniform spray; this will cover the most leaf area for optimal weed control. A 10-13% volume to volume (V/V) dilution (13-16 fl. oz. per gal. of water) is recommended for most situations. Larger weeds, perennial weeds and some grasses may require several applications. Also available in a ready-to-use formulation.

1453822	BioSafe Weed & Grass Killer - Gallon Concentrate	\$49.99
----------------	--	----------------

The right tool can help achieve your goal. These options can improve or maximize your efforts.

Prococo Coco Coir

This Compressed Coconut Coir Can Be Used in Hundreds Of Ways!

TARGET: For use in greenhouses, container plants, nurseries, gardens and landscaping as a replacement for soil and peat moss or as a soil amendment. Can also be used for animal and reptile bedding, playground mulch, in composting, liquid containment and much more.

DESCRIPTION: Made from the natural byproducts of coconut cultivation (crushed coconut husks), this premium coco coir product is renewable and sustainable. In addition to being earth-friendly, coco coir offers many advantages: it is free of bacteria and fungal spores, improves soil by slowly adding organic matter, has a low salt content and contains very little dust. It is also easy to hydrate and is resistant to mold and mildew.

Prococo is available in 3 different variations depending on your needs. Prococo Compressed **CocoPeat Block** is finely-ground coir and an excellent moisture-holder. Prococo Compressed **Chips-N-Fiber Block** contains a mixture of rolled and finely chopped husks. Prococo Compressed **CocoChip Block** is made from coarsely chopped husks allowing for excellent drainage.

1305580	Prococo Compressed CocoPeat Block - 10 lbs.	\$16.95
1305582	Prococo Compressed Chips-N-Fiber Block - 10 lbs.	\$16.95
1305581	Prococo Compressed CocoChip Block - 10 lbs.	\$16.95



LaMotte Garden Guide Soil Test Kit

Know Your Soil and Grow Your Best Possible Plants.

TARGET: Any gardening soil.

DESCRIPTION: This popular test kit provides quick and accurate analysis of the pH, Potassium, Phosphorus, and Nitrogen levels in soil. Knowing the composition of your soil has many benefits, including the following: it develops a baseline for healthy soil which allows for monitoring your soil throughout the growing season, protects plants by allowing for informed decisions on the use of fertilizers and supplements, saves money by reducing the use of unnecessary soil inputs, and helps to provide a healthy garden with vigorous growth

SUGGESTED USE: This easy-to-use kit comes with everything you'll need: graduated test tubes and scoops to measure the soil sample and reagents, a laminated color chart to compare your results to, an illustrated Garden Guide Manual with instructions in English, Spanish, and French, a pH Preference Guide that covers over 600 plants, trees, and shrubs, and The LaMotte Soil Handbook.

1275302	LaMotte Garden Guide Soil Test Kit	\$99.99
----------------	------------------------------------	----------------



Bug Blaster™

This Magic Wand Will Blast Away Destructive Bugs.

TARGET: Aphids, whiteflies, mealybugs, spider mites and other soft bodied insects.

DESCRIPTION: With this sprayer, you can quickly and effectively wipe out soft bodied insects and/or rid your plants of detritus. It can also impede mildew growth by keeping plant and other surfaces clean. All without using anything but water. The Bug Blaster nozzle creates a forceful 360° flat spray of water while the slender wand lets you insert it into, under and around the center of the plants to hit every plant surface. The spray will be strong enough to fatally traumatize soft bodied insects from eggs to adults, but will not harm the plants. Uses 60% less water than a standard spray gun.

SUGGESTED USE: Absolutely **DO NOT** use with any type of pesticide or fertilizer. Simply screw the Bug Blaster nozzle onto watering wand and connect to your garden hose and you are ready to go. Spray infested plants every 3-5 days for 2-3 weeks. Spray plants that are susceptible to powdery mildew, black spot or rust in the morning to give plants a chance to dry out during the day.

1452530	30" Anodized Blaster	\$24.95
1452535	Replacement Nozzle	\$12.99



Dustin-Mizer

Apply Dusts Wherever You Need Them.

DESCRIPTION: This ingenious applicator is a lightweight tool for applying insecticidal and fungicidal dusts to your garden, but it is equally useful when applying Diatomaceous Earth and other dusts to your barn, chicken coops, kennels and elsewhere. The Dustin-Mizer is built to last with a cleverly-designed extension deflector that allows you to dispense dust up under leaves, underneath boards/structures, and in hard-to-reach places like crawl spaces and attics.

SUGGESTED USE: Assemble product before using. Wear a mask and follow any additional dust product safety instructions. Fill hopper with dust product. Point at desired area while turning the handle at a constant speed.

1407001	Dustin-Mizer	\$49.95
----------------	--------------	----------------



Take your inputs farther with the right tool for the application.

ThermX™-70 Natural Wetting Agent

Overcome Adverse Water Conditions!

TARGET: Increases water & fertilizer uptake.

DESCRIPTION: This natural wetting agent is derived from yucca and contains 20% saponin extracted from *Yucca schidigera*. Saponin helps plants overcome adverse water conditions and is a great sticker for other sprays. Use ThermX-70 to increase crop's ability to establish in stressed conditions and increase water and fertilizer uptake. Increases permeability in heavy clay soil and reduces salt and alkali problems by improving drainage. Stimulates root growth, extending the area irrigation reaches.

SUGGESTED USE: Wetting Agent: ≈1/4 tsp./gal. water, ≈2-3 oz./acre.
Soil: ≈1-2 tsp./gal. water, ≈16 oz./acre

1402403	ThermX-70 Natural Wetting Agent - Quart	\$27.50
1402404	ThermX-70 Natural Wetting Agent - Gallon	\$94.50
1402405	ThermX-70 Natural Wetting Agent - 5 Gallons	\$390.00
1402406	ThermX-70 Natural Wetting Agent - 55 Gallon Drum*	CALL

*Call for freight quote. Call for larger sizes.



Boogie Blue Water Filters

A Great Grow Deserves Great Water.

TARGET: Chlorine, chloramine, pesticide residue, mercury, heavy metals, dissolved solids, fluoride and other chemicals.

DESCRIPTION: Whether you are dealing with additives in municipal water, or worry about what-all is in your well water, Boogie Blue filters can help. They attach quickly and easily to your hose and use catalytic carbon and/or KDF membranes to greatly reduce chemical compounds and organic matter in your water. Basic removes up to 99% of the chlorine and Plus removes up to 87% of the chloramine in municipal waters. Available as Boogie Blue Basic, which will last for 10,000-50,000 gallons of spray volume and Boogie Blue Plus, which will last for 40,000-50,000 gallons.

SUGGESTED USE: Attach filter to any standard 3/4" hose. Before initial use, flush filter by running water through it for 1 minute or until water runs clear. When not in use, keep attached to hose or remove and keep closed at both ends. Do not leave filter under constant water pressure. When storing, do not allow filter to dry out; storing in a zip-lock type bag works well.

2000600	Boogie Blue Basic	\$29.90
2000605	Boogie Blue Plus	\$59.00



LAWN & GARDEN SPRAYERS



A BONIDE® Auto Mix Hose End Sprayer

Just A Few Quick Steps To Flawless Spraying.

1800010	BONIDE Auto Mix Hose End Sprayer	\$19.99
----------------	----------------------------------	----------------

B Harris® Home, Auto & Garden Pump Sprayer

A Powerful Sprayer With Ease of Use Features.

1403212	1.5 L (55 fl. oz.) Sprayer	\$8.99
----------------	----------------------------	---------------

C Chameleon Adaptable Hose End Sprayer

Get Perfect Application With This Highly Adjustable Sprayer.

1800006	Chameleon Adaptable Hose End Sprayer	\$17.99
----------------	--------------------------------------	----------------

D Economical Liquid Hose End Sprayer

This Simple Sprayer Does All That You Need It To.

1800106	Economical Liquid Hose End Sprayer	\$12.49
----------------	------------------------------------	----------------

E Flo-Master By Hudson Lawn & Garden Sprayer

Economical, Easy-To-Use, Light Duty Sprayer For Home & Garden.

1800101	Flo-Master Lawn & Garden Sprayer - 1 Gallon	\$15.49
1800102	Flo-Master Lawn & Garden Sprayer - 2 Gallon	\$16.99

Protect your plants from hungry critters by using natural repellents and deterrents.



BONIDE® Repels-All Animal Repellent - Liquid

- 1287605 32 oz. RTS \$27.29
- 1287600 32 oz. Conc. \$19.99

BONIDE® MoleMax Mole & Vole Repellent

- 1287907 Quart RTS \$17.99
- 1287908 5 lbs. Granules \$15.49



Chase™ Granular Mole & Gopher Repellent

- 1287900 Chase Granular Mole & Gopher Repellent - 6 lbs. \$29.99
- 1287901 Chase Granular Mole & Gopher Repellent - 32 lbs. \$105.00

Chase™ Liquid Mole & Gopher Repellent

- 1287902 Chase Liquid Mole & Gopher Repellent- 32 oz. \$29.99
- 1287903 Chase Liquid Mole & Gopher Repellent- Gallon \$59.99



Victor® Mole & Gopher Repellent

- 1287515 Liquid Repellent Hose-End RTS - 32 oz \$17.49
- 1287510 Granular Repellent - 4 lb. Bag \$14.99
- 1287511 Granular Repellent - 10 lbs. Bag \$22.99

Deer Guard Ribbon, Cards and Strips

- 1264068 Deer Guard Strips - 1.25" x 12" - 24pk \$19.95
- 1264065 Deer Guard Cards - 4" x 6" - 12pk \$27.95
- 1264060 Deer Guard Ribbon - 150' \$24.95
- 1264061 Deer Guard Ribbon - 500' \$59.95



Bobbex-Rose™ Deer & Insect Repellent

- 1287551 RTU - Quart \$16.99
- 1287550 Concentrate - Quart \$24.99

If your area is prone to Fire ants, it's important to protect your family and animals.

Fertilome® Come And Get It II Fire Ant Killer

Kills The Whole Colony And Its Queen.

TARGET: Red Imported Fire Ants (*Solenopsis invicta*) and Harvester Ants.

DESCRIPTION: Fire Ants are notoriously hard to get rid of but even harder to live with. But this spinosad-based bait is very appealing to these insects. So much so, that they will take it back into their mound to share with the rest of the colony – including their queen. Ants start dying in 24-36 hours with mound or colony destruction in 3-14 days. Broadcast applications may take longer.

SUGGESTED USE: Apply around the perimeter of homes, ornamental plants, trees and shrubs, and in lawns and gardens. **Mounds:** 4 Tbsp. for each mound. For mounds larger than 15" in diameter, use 6 Tbsp. Sprinkle over and around mound in a 4 ft. diameter circle. **Broadcast:** Use 1/3-2/3 cup/1,000 sq. ft. or 3-6 cups/10,000 sq. ft. or 2 1/2-5 lbs/acre. Use higher rates for heavier infestations, faster activity and greater overall control. Spread with a hand-held or ground-driven rotary spreader. Extremely large mounds may require repeat applications. Use every other month during warm months to keep ants away. For outdoor use only.

1460020 Fertilome Fire Ant Killer - 1 lb. Bag **\$22.99**

Cannot be shipped to the following states: AK, CA, CO, CT, DE, HI, ID, IL, IN, IA, KY, ME, MD, MA, MI, MN, MT, NV, NH, NM, NY, ND, OH, OR, PA, RI, SD, VT, WA, WV, WI, WY, DC



Orange Guard® Fire Ant Control

Control Fire Ant Mounds Without Risking The Health Of Your Family, Pets Or The Environment.

TARGET: Fire ants.

DESCRIPTION: Orange Guard Fire Ant Control contains ingredients which are on the FDA GRAS list (generally recognized as safe). Orange Guard Fire Ant Control is water based, so further dilution is easy. It works by dissolving away the waxy coating on the ant's exoskeleton, which clogs their spiracles (how they breathe), and they suffocate.

SUGGESTED USE: Puncture the mounds and then saturate them, using 1/2 gallon of either full strength or diluted (3 parts water to 1 part Orange Guard Fire Ant Control). Dilution does not harm grass and covers approx. 8 mounds.

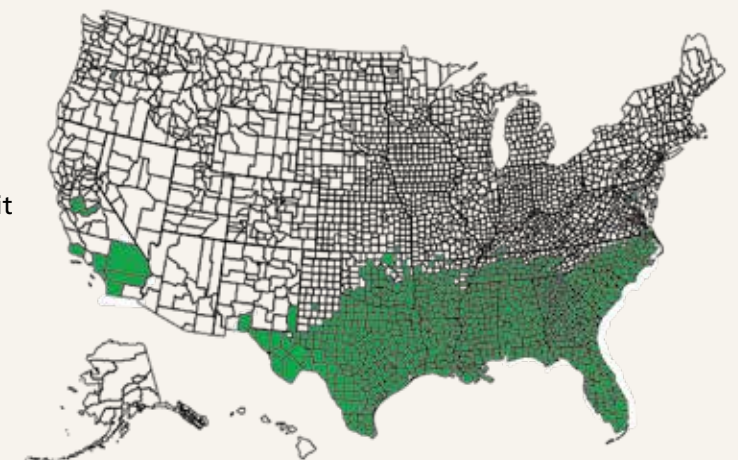
1460005 Orange Guard Fire Ant Control - Gallon **\$36.99**

Cannot be shipped to the following states: AK, CO, DC, DE, ID, IL, IN, IA, KS, KY, MA, MD, ME, MI, MN, MO, MT, ND, NE, NH, NJ, NY, OH, OR, PA, PR, RI, SD, UT, VT, VA, WA, WI, WY



DID YOU KNOW?

Imported fire ants (*Solenopsis invicta* and *S. richteri*) originated in South America. In the United States, imported fire ants currently inhabit all or parts of **Alabama, Arkansas, California, Florida, Georgia, Louisiana, Mississippi, New Mexico, North Carolina, Oklahoma, Puerto Rico, South Carolina, Tennessee, Texas, and Virginia.**



FLEA CONTROL

Comprehensive flea control starts in the soil, and extends to the surrounding areas and the pets themselves!

NemaSeek™ Hb & NemAttack™ Sc Beneficial Nematodes



Control Soil Pests in Turf & Garden

NemAttack Sc (*Steinernema carpocapsae*) Beneficial Nematodes control flea larvae in the soil and break flea life cycle for ongoing control through the season. They are commonly used for chemical-free pest control in organic agriculture. The Sc/Hb Combo provides added control as one species lays waiting in the topsoil while the other hunts for eggs. **See pages 16-19 for more information.**

NemAttack™ & NemaSeek™ Combo Pack Sc/Hb

1220331	≈10 million	\$66.00
1220332	≈50 million	\$137.50

NemAttack *Steinernema carpocapsae*

1220320	≈10 million	\$47.25
1220321	≈50 million	\$79.20



CRAWLING INSECT CONTROL

Control ants, roaches and more with traps, repellents and natural sprays to protect your home and yard.

Essentria™ G Granular Insecticide

A Granular That Handles A Handful Of Outdoor Pests!

TARGET: Ants, bermuda grass mites, centipedes, chiggers, chinch bugs, clover mites, cockroaches, crickets, earwigs, fall armyworms, fleas, leafhoppers, millipedes, sowbugs/pillbugs, and other insect pests.

DESCRIPTION: This quick and long-lasting natural granular insecticide uses essential botanical oils clove, thyme and wintergreen to treat various pests. Easy-to-use outdoors on landscapes, turf, building facilities and around organic operations, sensitive areas such as schools, and in aquatic environments.

SUGGESTED USE: Use with a hand spreader. For treatments around buildings, apply uniformly a band about 5-10 ft. wide. For landscapes and turf, use around 3-5 lbs./1000 sq. ft. Water in, applying about 1/8 in. - 1/4 in. of water without puddling. For ant mounds, use about 1-2 tsp./nest. For red imported fire ants, use around 1/2 cup/nest and make a 2 ft. band around nest.

1273050	Essentria G Granular Insecticide - 22 lbs.	\$73.00
---------	--	---------



Trifecta Outdoor Pest Control Spray

Powerful Pest Control from A Potion of Potent Oils.

TARGET: Fleas, Gnats, Midges, Mites, Mosquitoes, Spiders, Stink Bugs, Ticks, and more.

DESCRIPTION: This innovative formula features essential oils in nano-sized particles, to deliver contact control of vexing outdoor pests. Because essential oils are a contact control, complete coverage is essential for efficacy and these tiny droplets allow the spray to spread thoroughly and cover completely. Comes in a concentrate and a ready to use. The ready to use covers up to 20,000 sq ft and the concentrate covers up to 5,000 sq. ft.

SUGGESTED USE: Apply to lawns, patios, backyards, foundations, trees, bushes, shrubs, and ornamental landscaping. **Not** for application to plants grown for food or to edible parts of plants.

1273043	32 oz. Ready to Use Hose-End	\$25.99
1273041	16 oz. Concentrate	\$29.99
1273042	32 oz. Concentrate	\$49.99



INDOOR PEST TRAPS

TERRO® Refillable Flea Trap

Works Silently to Provide 24 hr. Flea Protection.

1280130	1 Trap	\$21.49
1280135	Refill Glue Boards - 3 Pack	\$7.49



Trifecta Flea & Tick Yard Spray

Keep Your Yard Flea & Tick Free with This Fragrant Oil Spray.

1273047	32 oz Hose-End Ready to Use	\$34.99
1452502	16 oz Concentrate	\$29.99



Flea'n Tick B Gone™

Gentle & Fast Control with Plant Based Ingredients.

1452501	16 oz. Ready to Spray	\$19.99
1452502	Gallon Ready to Use	\$63.00



Enoz® BioCare® Clothes Moth Traps

Break The Reproductive Cycle By Luring, Trapping & Killing Adult Male Moths.

1260702	2 Traps	\$7.99
1260706	2 Traps per Pack - Bundle of 4	\$27.16

Enoz® BioCare® Flour & Pantry Moth Traps

Stop Sharing Your Food With Pesky Moths.

1280318	2 Pack	\$7.99
1280319	2 Pack - Bundle of 2	\$15.18
1280320	2 Pack - Bundle of 4	\$28.76

Enoz® Trap-N-Kill™ Spider & Insect Trap

Rid Your House Of Crawling, Creeping, Scurrying & Scuttling Pests!

1280222	2 Pack	\$2.99
1280224	2 Pack - Bundle of 5	\$12.71

Harris® Roach Traps

This Pesticide-Free Trap Will Be Their Last Step!

1219552	2 Pack	\$5.99
---------	--------	--------



Actinovate AG.....	48	DTE Vegetable Garden, 4-4-4.....	47	Plant Success Organics Granular, 3-1-2.....	41
<i>Adalia bipunctata</i>	4	Dustin-Mizer.....	56	Plant Thrive.....	43
AgroThrive Fruiting & Flowering Fertilizer, 3-3-5.....	45	Earth Harvest Gluten-8 Liquid Corn Gluten.....	52	PredaLure.....	15
AgroThrive General Purpose Fertilizer, 3-3-2.....	45	Earth's Ally Weed & Grass Killer.....	54	PRINCIPLE WP.....	27
Aphid Parasite - <i>Aphelinus abdominalis</i>	6	Economical Liquid Hose End Sprayer.....	57	Prococo Coco Coir.....	56
Aphid Parasite - <i>Aphidius colemani</i>	6	EcoMulch Rolls.....	53	PyGanic Gardening.....	23,31
Aphid Parasite - <i>Aphidius ervi</i>	6	EcoSmart Horse Fly Spray.....	36	PyGanic Specialty.....	34
Aphid Predator - <i>Aphidoletes aphidimyza</i>	6	Ecovet.....	36	Red Scale Parasite - <i>Aphytis melinus</i>	14
AQUABAC 200G Granular Bti Mosquito Control.....	37	EM•1 Microbial Inoculant.....	42	RootShield Plus Granules & RootShield Plus WP.....	49
AQUABAC Xt.....	37	Enoz BioCare Clothes Moth Traps.....	61	Rove Beetle - <i>Dalotia coriaria</i>	8
ARBICO Organics Assassin Bug - <i>Zelus renardii</i>	4	Enoz BioCare Flour & Pantry Moth Traps.....	61	SaniDate 5.0.....	51
ARBICO Organics Beneficial Nematodes.....	16-19	Enoz Trap-N-Kill Spider & Insect Traps.....	61	Serenade ASO.....	48
ARBICO Organics Blue Insect Traps.....	20	EpiShield O.....	27	Spider Mite Destroyer - <i>Feltiella acarisuga</i>	10
ARBICO Organics Compost Plus.....	40	Equiderma Horse Spray.....	36	Spider Mite Destroyer - <i>Stethorus punctillum</i>	11
ARBICO Organics Earthworm Castings.....	40	Essentria G Granular Insecticide.....	61	Sticky Fly Ribbon.....	35
ARBICO Organics Composting Earthworms.....	40	Essentria IC Pro.....	30	Stiky Plant Stakes.....	21
ARBICO Organics Fly Eliminators.....	32-33	Fertilome Come And Get It II Fire Ant Killer.....	59	Stiky Traps.....	21
ARBICO Organics Good Bug Power Blend.....	15	Flea'n Tick B Gone.....	60	Stiky Strips Yellow Insect Traps.....	21
ARBICO Organics Root Build 240 Mycorrhizal Fungi.....	41	Flo-Master by Hudson Lawn & Garden Sprayers.....	57	SuffOil-X.....	26
ARBICO Organics Solar Fly Trap.....	35	Fly Terminator Pro Fly Trap.....	35	Sustane Spring Weed & Feed, 9-0-0.....	52
ARBICO Organics Yellow Insect Traps.....	21	Fungus Gnat Predator - <i>Stratiolaelaps scimitus</i>	8	Systemica Insect Killer.....	28
Armory SP.....	42	Garlic Barrier.....	28	Tanglefoot Tangle-Trap Sticky Coating.....	20
AzaGuard.....	23,31	Gluten-8 Pre-Emergent Herbicide.....	52	TERRO No Mess Mosquito Larvacide Pouches.....	38
AzaSol.....	31	Green Lacewings - <i>Chrysoperla spp</i>	5	TERRO Refillable Flea Trap.....	60
balEnce Fly Spray.....	34	grubGONE! G.....	22	The Amazing Doctor Zymes Eliminator.....	26
beetleGONE! tlc.....	23	Harris Home, Auto & Garden Pump Sprayer.....	57	The Amazing Doctor Zymes Poultry Guard.....	34
Bee-Scent.....	15	Harris Roach Traps.....	61	ThermX-70 Natural Wetting Agent.....	57
Bobbex-Rose Deer & Insect Repellent.....	58	Homeplate.....	55	Tree Tanglefoot Insect Barrier.....	39
BioCeres WP.....	23, 29	Horse Fly TweetMint.....	36	Torched Weed Killer.....	55
BioSafe Weed & Grass Killer.....	55	IV Organic 3-In-1 Plant Guard.....	39	Thrips & Whitefly Predator - <i>Amblyseius swirskii</i>	9
Bite Free Stable Fly Trap.....	35	LALGUARD M52 OD.....	30	Thrips Predator - <i>Amblyseius cucumeris</i>	9
Biting Fly Trap.....	35	LALSTOP K61 WP.....	49	Trifecta Flea & Tick Yard Spray.....	60
Blue & Yellow Sticky Ribbon Rolls.....	20	LaMotte Garden Guide Soil Test Kit.....	56	Trifecta Outdoor Pest Control Spray.....	61
BONIDE Auto Mix Hose End Sprayer.....	57	Leafminer Parasite - <i>Diglyphus isaea</i>	14	Thyme Guard.....	50
BONIDE Captain Jack's Deadweed Brew.....	54	Maxicrop Kelp Meal, 1-0-2.....	44	Trifecta Outdoor Pest Control Spray.....	61
BONIDE Captain Jack's Lawnweed Brew.....	53	Maxicrop Soluble Seaweed Powder, 0-0-17.....	44	Victor Mole & Gopher Repellent.....	58
BONIDE Captain Jack's Neem Max.....	23,28	Mealybug Destroyer - <i>Cryptolaemus montrouzieri</i>	14	WeedGuardPlus Organic - Heavy Weight Rolls.....	53
BONIDE Captain Jack's Orchard Spray.....	39	Mealybug Parasitoid - <i>Anagrus spp</i>	14	Whitefly Parasite - <i>Encarsia formosa</i>	7
BONIDE MoleMax Mole & Vole Repellent.....	58	Mighty Plant Instant Compost Tea.....	43	Whitefly Parasite - <i>Eretmocerus eremicus</i>	7
BONIDE Repels-All Animal Repellent.....	58	Mikrobs.....	42	Whitefly Predator - <i>Delphastus catalinae</i>	7
BONIDE Thuricide.....	24	Mikro-Myco.....	41	Yellow Sticky Tape.....	21
Boogie Blue Water Filters.....	57	Milk Jugg Trap.....	35	ZeroTol HC.....	51
BotaniGard ES & 22WP <i>Beauveria bassiana</i> GHA.....	23,29	Milky Spore Powder.....	22		
BotaniGard MAXX.....	23,29	MilStop SP Foliar Fungicide.....	49		
BT NOW.....	25	Minute Pirate Bug - <i>Orius insidiosus</i>	4		
Bug Blaster.....	56	MiteMix.....	12		
BugPellent Fly & Tick Spray.....	36	Mite Predator - <i>Amblyseius andersoni</i>	10		
Captivator Fly Trap.....	35	Mite Predator - <i>Galendromus occidentalis</i>	12		
Cease Biological Fungicide.....	48	Mite Predator - <i>Neoseiulus californicus</i>	10		
Chameleon Adaptable Hose End Sprayer.....	57	Mite Predator - <i>Neoseiulus fallacis</i>	11		
Chase Granular Mole & Gopher Repellent.....	58	Mite Predator - <i>Phytoseiulus persimilis</i>	11		
Chase Liquid Mole & Gopher Repellent.....	58	Molt-X.....	23		
Cintro Insecticidal Soap.....	27	Monterey B.t.....	24		
Cueva Fungicide.....	50	Monterey Complete Disease Control.....	50		
Deer Guard Ribbon, Cards and Strips.....	58	Monterey Fruit Tree Spray Plus.....	39		
DiPel Pro DF & DiPel DF.....	25	Monterey Garden Insect Spray.....	25		
DTE Acid Mix, 4-3-6.....	46	Monterey Neem Oil.....	28		
DTE All Purpose Mix, 4-6-2.....	46	Mosquito Barrier.....	38		
DTE Azomite Granulated, 0-0-0.2.....	47	Mosquito Dunk & Chunks.....	37		
DTE Azomite Powder, 0-0-0.2.....	47	Mosquito Bits.....	37		
DTE Bat Guano, 7-3-1.....	46	Moth Egg Parasites - <i>Trichogramma spp</i>	13		
DTE Bio-Fish, 7-7-2.....	46	M-Pede.....	30		
DTE Bio-Live, 5-4-2.....	46	Natular DT.....	38		
DTE Blood Meal, 12-0-0.....	46	Natupol Bumblebee Hives.....	15		
DTE Bone Meal, 3-15-0.....	46	Neptune's Harvest Fish & Seaweed Fertilizer, 2-3-1.....	45		
DTE Citrus Mix, 6-3-3.....	46	Neptune's Harvest Fish Fertilizer, 2-4-1.....	45		
DTE Crab Meal, 4-3-0.....	46	Neptune's Harvest Seaweed Plant Food, 0-0-1.....	45		
DTE Fish Bone Meal, 4-12-0.....	46	NoFly WP.....	30		
DTE Flower Garden, 2-6-5.....	47	NutriRoot, 2-2-3.....	43		
DTE Fruit Tree, 6-2-4.....	37,39	Orange Guard Fire Ant Control.....	59		
DTE Granular Humic Acids.....	47	Organic JMS Stylet-Oil.....	26		
DTE Langbeinite, 0-0-22.....	47	Organocide Bee Safe 3-in-1 Garden Spray.....	26		
DTE Rock Phosphate, 0-3-0.....	47	Outdoor Pest Control.....	38		
DTE Rose & Flower Mix, 4-8-4.....	47	OxiDate 2.0.....	51		

ASK THE EXPERTS

Take advantage of our FREE consultation! Let us help solve your gardening and farming issues with our start to finish ARBICO Organics solutions. Our trained staff will help determine what problem you have (insect, disease, weed, nematode, critter, pet issue, fertility needs), offer solutions for immediate relief and prescribe a long term sustainable program for continued success.

AUTO SHIP PROGRAM

We can automatically ship any product on a schedule so you won't run out. Popular auto ship products include: Fly Eliminators, Beneficial Nematodes, Predatory Mites as well as most in stock pest control and soil health products.

PAYMENT OPTIONS

Credit Cards (ARBICO accepts all major credit cards) and **PayPal**.

Mail Checks or Money Orders To:

ARBICO Organics, 10831 N. Mavinee Dr., Ste. 185, Oro Valley, AZ 85737-9531

We do not accept cash via mail.



CUSTOMER SERVICE

All phone calls answered by a live person during regular business hours: Monday through Friday, 8:00 AM - 4:30 PM (Arizona Time)

• Se habla Español

Toll Free: 800-827-2847

International calls: 520-825-9785

Fax: 520-825-2038

CRITICAL INFORMATION FOR CERTIFIED ORGANIC GROWERS

Please be aware that the certified status of a product can change at any time without notification from the manufacturer or OMRI. Although we make every attempt to assure that the status of the products listed as certified organic are current and up-to-date, when purchasing a product we advise you to protect your certification by checking with your certifying agency that it is acceptable or by going online to OMRI at www.omri.org.

LIVE DELIVERY & REFUND POLICY

For products other than live insects: Unused, unopened, undamaged items in original packaging can be returned within 30 days. For full details, see our Return Policy at www.arbico-organics/category/return-policy.

For live insects: We guarantee that you will receive live beneficial insects (mites and beneficial nematodes). If your insects perish en route, we will gladly send you a replacement order. We cannot accept returns or make refunds for other reasons since these are perishable products with a limited lifespan and cannot be resold. We cannot guarantee results with live insects since we have no control over how the product is applied, the extent of the problem, and other variables. But if you are not satisfied with your results, we will cancel any unshipped orders and refund the portion of any prepayment that applies to unshipped orders.

ARBICO Organics

10831 N. Mavinee Dr., Ste. 185
Oro Valley, AZ 85737-9531

800-827-2847

Please call for product availability.



Limitations and Disclaimers

This publication is designed and produced by ARBICO Organics solely for informational purposes. Reasonable efforts have been made to provide accurate information, but errors may occur. All insect quantities are approximate (and the "double tilde" symbol ≈ so indicates). All prices are subject to change without notice. Product specifications are provided by the manufacturers and are also subject to change without notice. Photographs are for illustrative purposes only.

Notwithstanding any other statements in this catalog, **all warranties, express and implied, including warranties of merchantability and fitness for a particular purpose, are hereby disclaimed and excluded.** By placing an order with ARBICO, buyer agrees that the limited remedies described in "Our Satisfaction Guaranties" are the sole and exclusive remedies available to buyer. All damages, including incidental and consequential damages, are hereby excluded.

ARBICO Organics Brand Partners

Providing Natural & Organics Solutions for Growers of All Sizes





10831 N. Mavinee Dr., Suite 185
Oro Valley, AZ 85737

PRSR STD
U.S. Postage
PAID
ARBICO

ARBICO FLY ELIMINATORS
SERIOUS FLY CONTROL



"We've been growing Fly Eliminators in our insectary for over 40 years. Join the 1,000's of satisfied ARBICO customers who use Fly Eliminators for fly control year after year!"

*Sheri Herrera de Frey,
Vice President,
ARBICO Organics®*

Only \$25.00
Per Shipment for 2-5 Horses
USPS Shipping Included in Prices!**

Number of Horses/Animals	Units Suggested†	Value Pricing
1	1/4 Unit	\$19.99
2 - 5	1/2 Unit	\$25.00
6 - 10	1 Unit	\$37.80
11 - 15	1 1/2 Units	\$48.95
16 - 20	2 Units	\$61.00
21 - 25	2 1/2 Units	\$73.60
26 +	Please Call 1-800-827-2847	

Order Your Fly Control Program Today!
****USPS shipping included up to 5 units.**

†These are units of measurement, not warranties or guarantees of performance. The total seasonal cost of Fly Eliminators™ depends on the recommended number of shipments which may be different than what competitors may recommend. We recommend releasing a shipment every 2-4 weeks throughout the fly season, but releases ranging from 1-6 weeks are not uncommon. Customer experiences may vary. The quantity required and frequency of application can differ according to region, size and condition of property or stables, severity of fly problem, neighbors, manure management, number of animals and start date of program. All warranties, express or implied are disclaimed. One unit bag shown. © 2026 Arizona Biological Control, Inc.

SPECIAL OFFER \$10 OFF

Any Order of \$75 or More

With your catalog order or online purchase at arbico-organics.com.

Special Offer Code: Spring26

Expires: 8/31/2026 • Minimum \$75 purchase.

Cannot be used on Fly Eliminators • Cannot be used with any other offers
Cannot be used on items with free shipping



1-800-827-2847 • www.arbico-organics.com



© 2026 ARBICO Organics®. All Rights Reserved.

03/2026